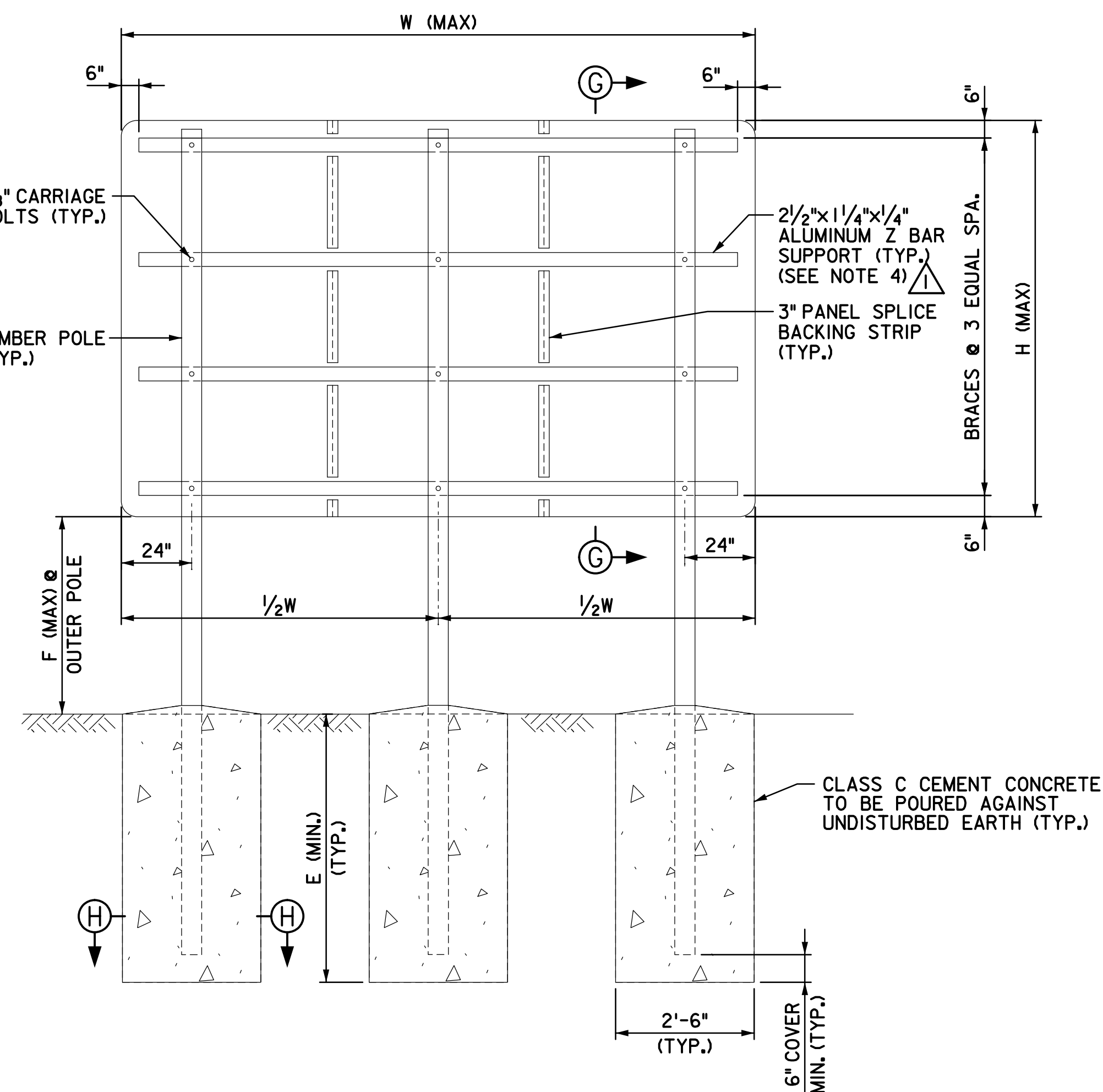


DOUBLE POLE SIGNS
N.T.S.



TRIPLE POLE SIGNS
N.T.S.

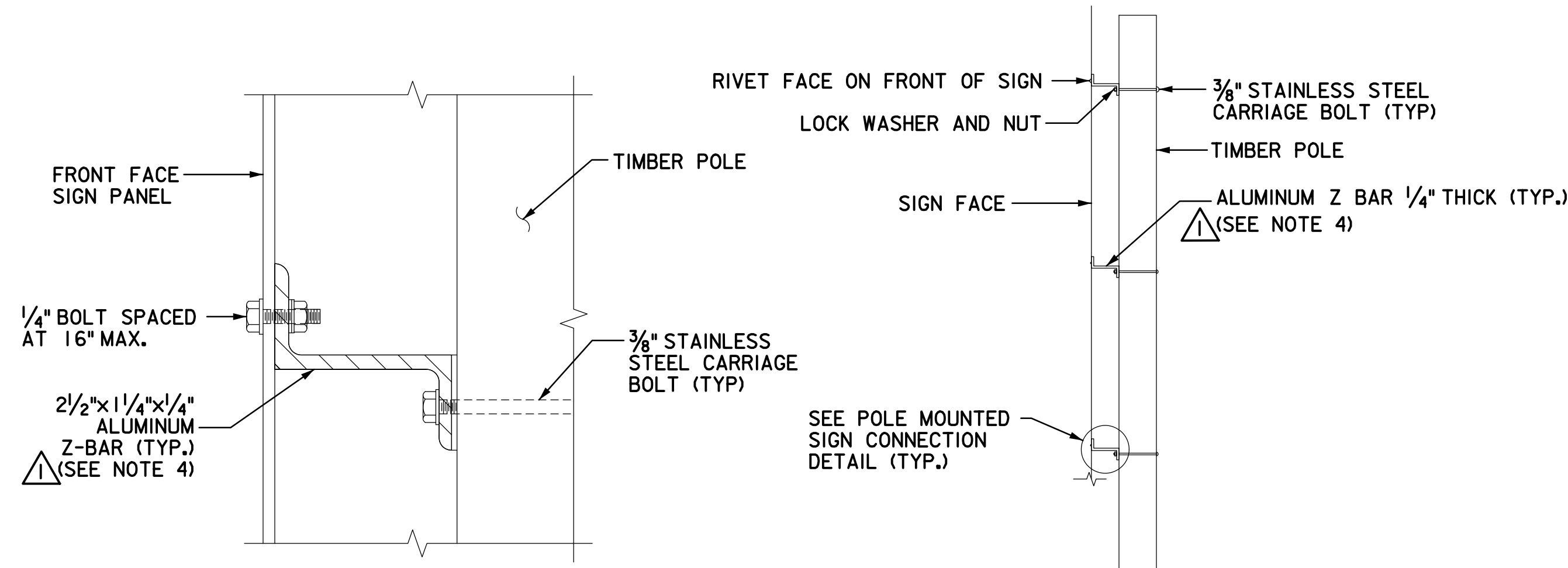
TABLE H - NON-BREAKAWAY DOUBLE AND TRIPLE POLE SUPPORTED SIGN STRUCTURES									
H (FT)	W (FT)	POLE CLASS	NO. OF POLES	FURNISHED POLE LENGTH (FT)	F (FT)	E (FT)	C (IN)	L (FT)	
10	10	I	2	30	7.0 TO 14.0	6.0	36.5	22.5 TO 29.5	
10	12	I	2	35	7.0 TO 14.0	6.0	39.0	22.5 TO 29.5	
10	14	I	2	35	7.0 TO 14.0	6.5	39.0	23.0 TO 30.0	
10	16	I	3	30	7.0 TO 14.0	6.0	36.5	22.5 TO 29.5	
10	18	I	3	35	7.0 TO 15.0	6.5	39.0	23.0 TO 31.0	
10	20	I	3	35	7.0 TO 15.5	6.0	39.0	22.5 TO 31.0	
11	11	I	2	35	7.0 TO 14.0	6.0	39.0	23.5 TO 30.5	
11	12	I	2	35	7.0 TO 14.0	6.5	39.0	24.0 TO 31.0	
11	14	I	2	35	7.0 TO 14.0	6.5	39.0	24.0 TO 31.0	
11	16	I	3	35	7.0 TO 14.0	6.5	39.0	24.0 TO 31.0	
11	18	I	3	35	7.0 TO 15.0	6.5	39.0	24.0 TO 32.0	
11	20	I	3	35	7.0 TO 15.5	6.5	39.0	24.0 TO 32.5	
11	16	H1	3	35	7.0 TO 14.0	6.0	39.0	24.0 TO 31.0	
12	12	I	2	35	7.0 TO 14.0	6.5	39.0	25.0 TO 32.0	
12	14	I	2	35	7.0 TO 14.0	6.5	39.0	25.0 TO 32.0	
12	16	I	3	35	7.0 TO 14.0	6.0	39.0	24.5 TO 31.5	
12	18	H1	3	35	7.0 TO 15.0	7.0	41.5	25.5 TO 33.5	
12	20	H1	3	35	7.0 TO 15.5	7.0	41.5	25.5 TO 34.0	
13	13	H1	2	35	7.0 TO 14.0	7.0	41.5	26.5 TO 33.5	
13	14	H1	2	35	7.0 TO 14.0	7.5	41.5	27.0 TO 34.0	
13	16	H1	3	35	7.0 TO 14.0	6.5	41.5	26.0 TO 33.0	
13	18	H2	3	40	7.0 TO 15.5	7.0	46.0	26.5 TO 35.0	
13	20	H2	3	40	7.0 TO 15.5	7.5	46.0	27.0 TO 35.5	
14	14	H2	2	35	7.0 TO 14.0	7.5	43.5	28.0 TO 35.0	
14	16	H2	3	35	7.0 TO 14.0	7.0	43.5	27.5 TO 34.5	
14	18	H2	3	40	7.0 TO 15.5	7.0	46.0	27.5 TO 36.0	
14	20	H2	3	40	7.0 TO 15.5	7.5	46.0	28.0 TO 36.5	
15	15	H2	3	35	7.0 TO 10.0	6.5	43.5	28.0 TO 31.0	
15	15	H2	3	40	10.0 TO 14.0	7.0	46.0	31.5 TO 35.5	
15	16	H2	3	40	7.0 TO 14.0	7.0	46.0	28.5 TO 35.5	
15	18	H2	3	40	7.0 TO 15.5	7.5	46.0	29.0 TO 37.5	
15	20	H2	3	40	7.0 TO 15.5	7.5	46.0	29.0 TO 37.5	

NOTES:

- SIGN STRUCTURES IN TABLE H SHALL REQUIRE ROADSIDE PROTECTION OR BE LOCATED OUTSIDE OF THE CLEAR ZONE.
- EXIT OVERPANEL SIGNS WIDER THAN 11'-0" SHALL BE MOUNTED ON TIMBER POLE SIGNS. OVERPANEL MOUNTING DETAIL TO BE DESIGNED BY THE ENGINEER.
- MINIMUM TIMBER POLE CIRCUMFERENCE, "C", IS MEASURED AT SIX (6) FEET FROM THE BUTT OF THE POLE.
- THE FABRICATOR SHALL SUBMIT FOR APPROVAL A SHOP DRAWING SHOWING ALL SPLICE LOCATIONS AND DETAILS.

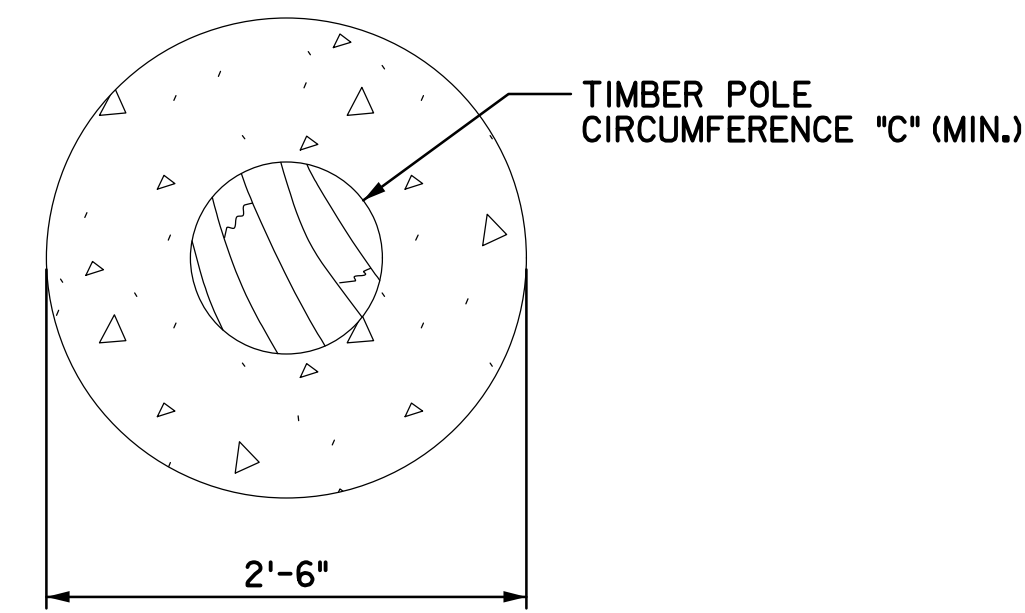
REFERENCES:

- FOR GENERAL NOTES, SEE SHEET SI-43.
- FOR BACKING STRIP DETAIL SEE SHEET SI-46.

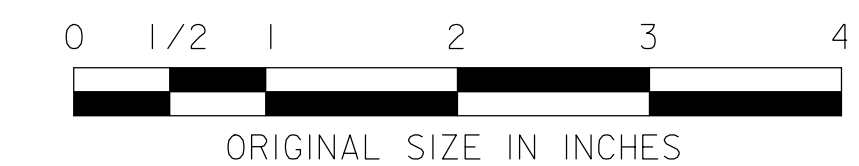


POLE MOUNTED SIGN CONNECTION DETAIL
N.T.S.

SECTION G-G
N.T.S.



SECTION H-H
N.T.S.



NEW JERSEY TURNPIKE AUTHORITY

GARDEN STATE PARKWAY

GROUND MOUNTED SIGNS
DOUBLE AND TRIPLE POLE SIGNS

OFFICE OF THE CHIEF ENGINEER
NEW JERSEY TURNPIKE AUTHORITY

STANDARD DRAWING

WOODBRIDGE NEW JERSEY

SI-47

1	STRINGER UPDATES	03/26
0	ORIGINAL DRAWING	6/16
REV.	DESCRIPTION	DATE

CONTRACT NO.

SHEET NO. OF