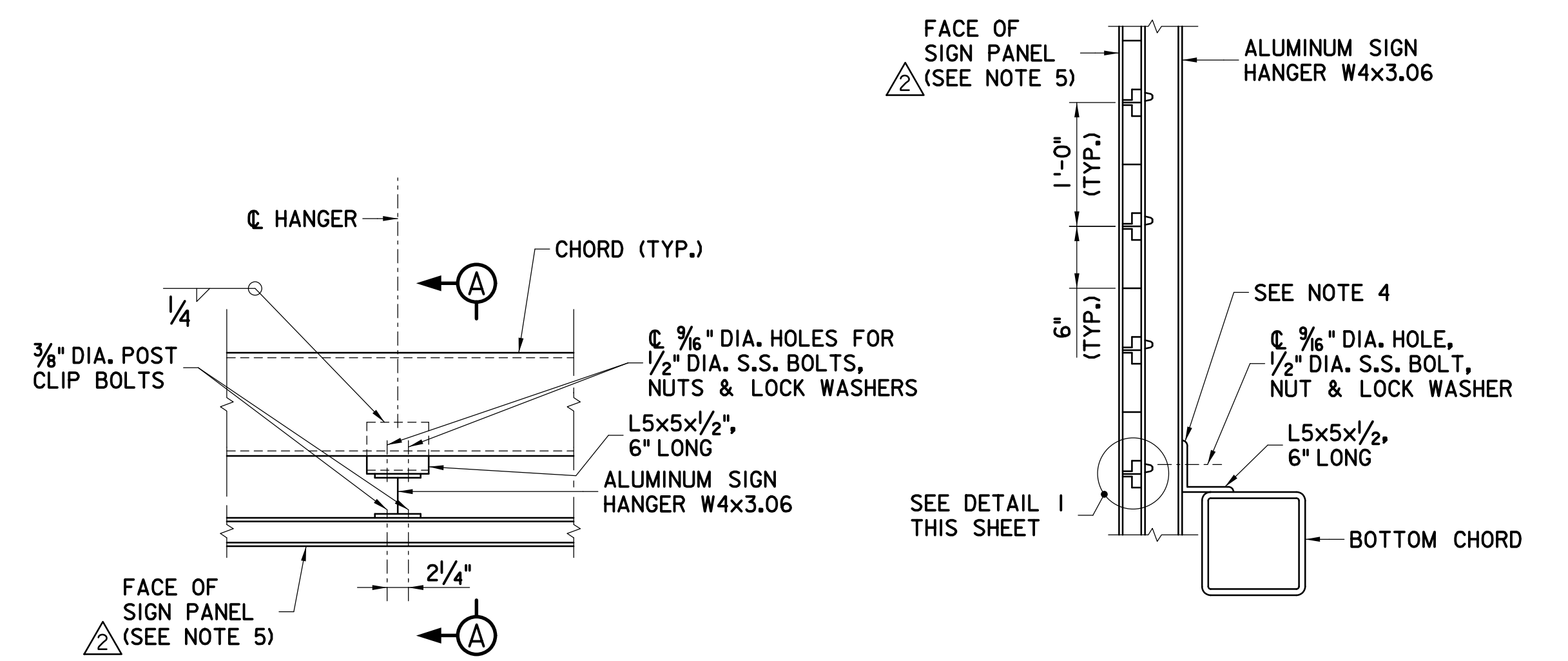


**PLAN**

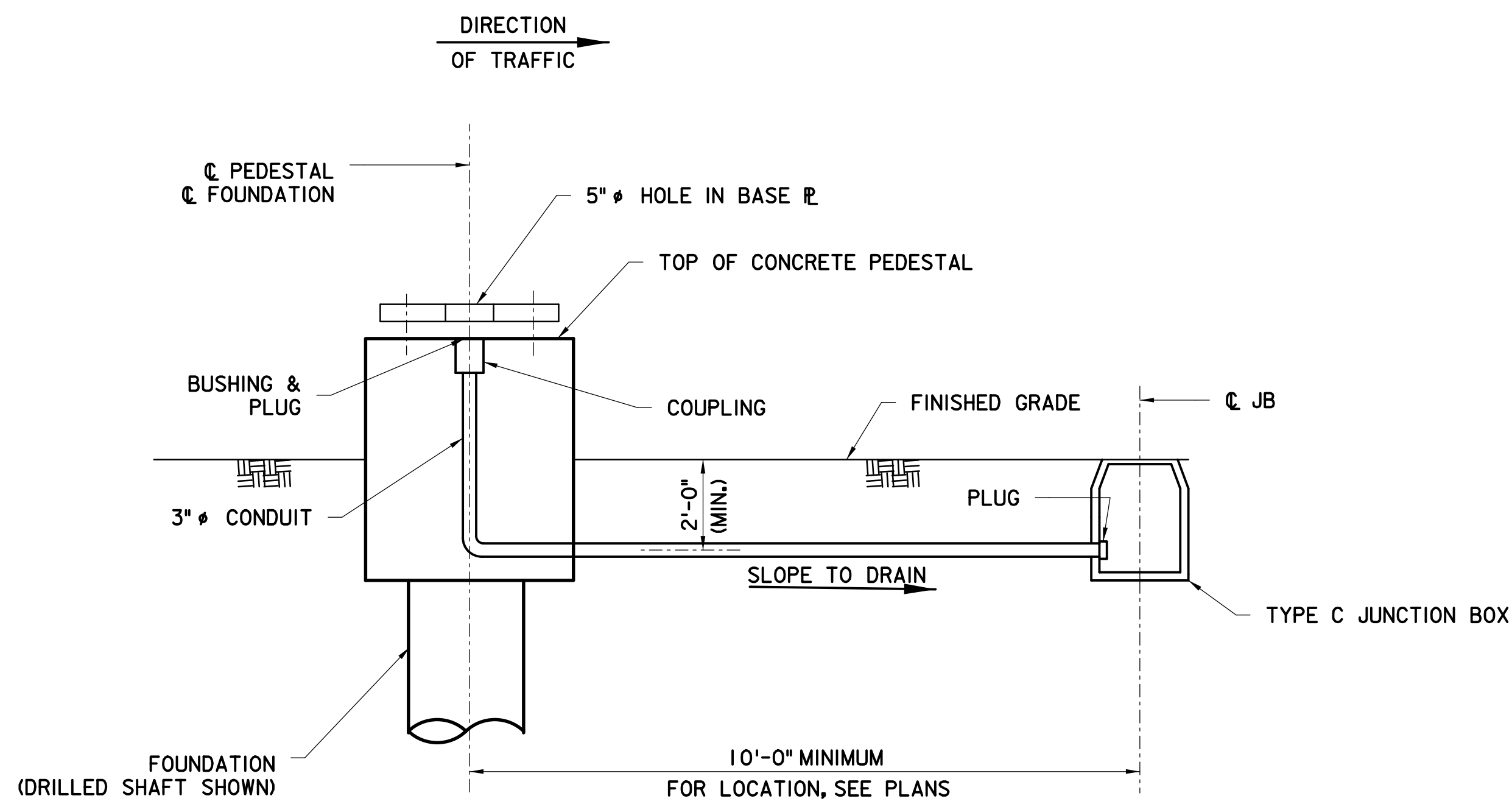


**PLAN**

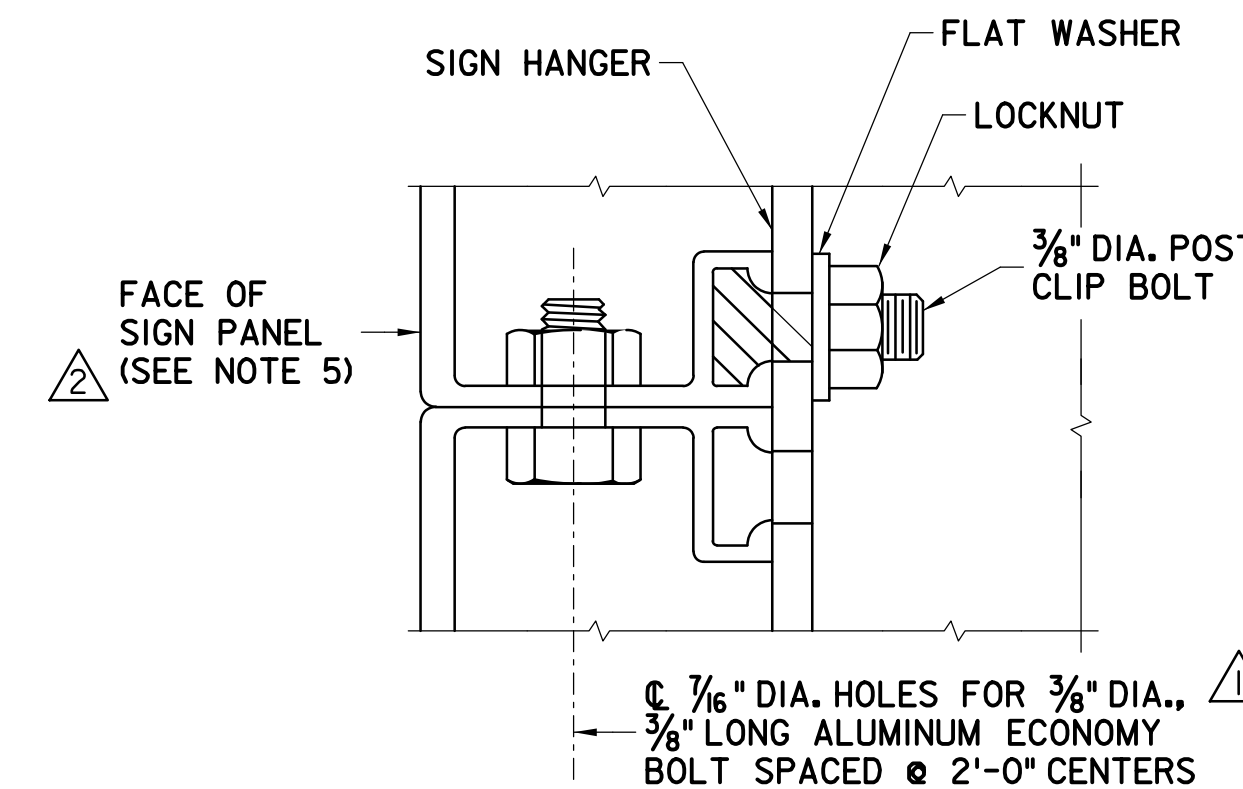
**SECTION A-A**

**SIGN PANEL CONNECTION DETAILS**

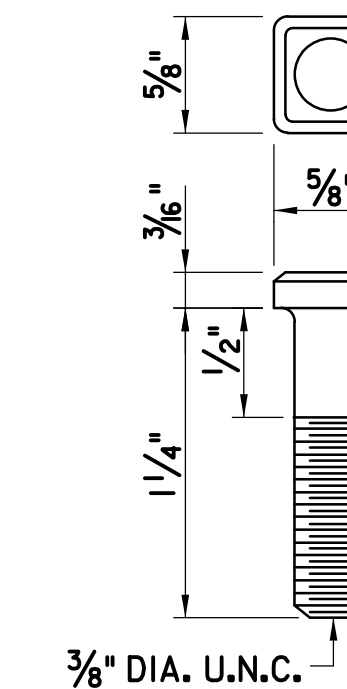
1" = 1'-0"



**SIDE VIEW**



**DETAIL I**  
N.T.S.



**POST CLIP BOLT**  
N.T.S.

**NOTES:**

1. ALUMINUM SIGN HANGERS W4x3.06 SHALL BE SPACED AT 4'-6" MAXIMUM O.C.
2. ALUMINUM EXTRUSION AND CONNECTIONS ARE SHOWN FOR INFORMATION ONLY. EXACT DETAILS AND RELATED HARDWARE TO BE PROVIDED BY THE MANUFACTURER, AND TO BE APPROVED BY THE ENGINEER.
3. S.S. DENOTES STAINLESS STEEL CONFORMING TO ASTM A276, TYPE 304.
4. APPROVED S.S. SHIM PLATES OR NEOPRENE PADS SHALL BE PLACED BETWEEN DISSIMILAR METALS AT CONNECTED SURFACES OF ALUMINUM TO STEEL.
5. EXTRUDED SIGN PANEL SHOWN, FLAT SHEET SIGN PANEL SIMILAR.
6. FOR FLAT SHEET SIGN PANEL TO STRINGER CONNECTION DETAILS, SEE STANDARD DRAWING SI-13.
7. FOR FLAT SHEET SIGN PANEL STRINGER TO HANGER CONNECTION DETAILS, SEE SECTION C-C ON STANDARD DRAWING SI-16A.

**TYPICAL CONDUIT TERMINATION DETAILS AT SIGN SUPPORT STRUCTURES**  
(CANTILEVER SIGN STRUCTURE SHOWN, OVERHEAD SPAN-TYPE SIGN STRUCTURE SIMILAR)  
N.T.S.



ORIGINAL SIZE IN INCHES

APP.	NO.	DATE	REVISION
	2	03/26	STRINGER UPDATES
	1	03/14	REVISED HOLE SIZE
	0	09/12	REISSUED DRAWING

NEW JERSEY TURNPIKE AUTHORITY	
<b>GARDEN STATE PARKWAY</b>	
MISCELLANEOUS DETAILS SIGN ATTACHMENT & CONDUIT TERMINATION	
OFFICE OF THE CHIEF ENGINEER NEW JERSEY TURNPIKE AUTHORITY	2010 STANDARD <b>DRAWING SI-42</b>
WOODBRIDGE NEW JERSEY	

CONTRACT NO.

SHEET NO. OF