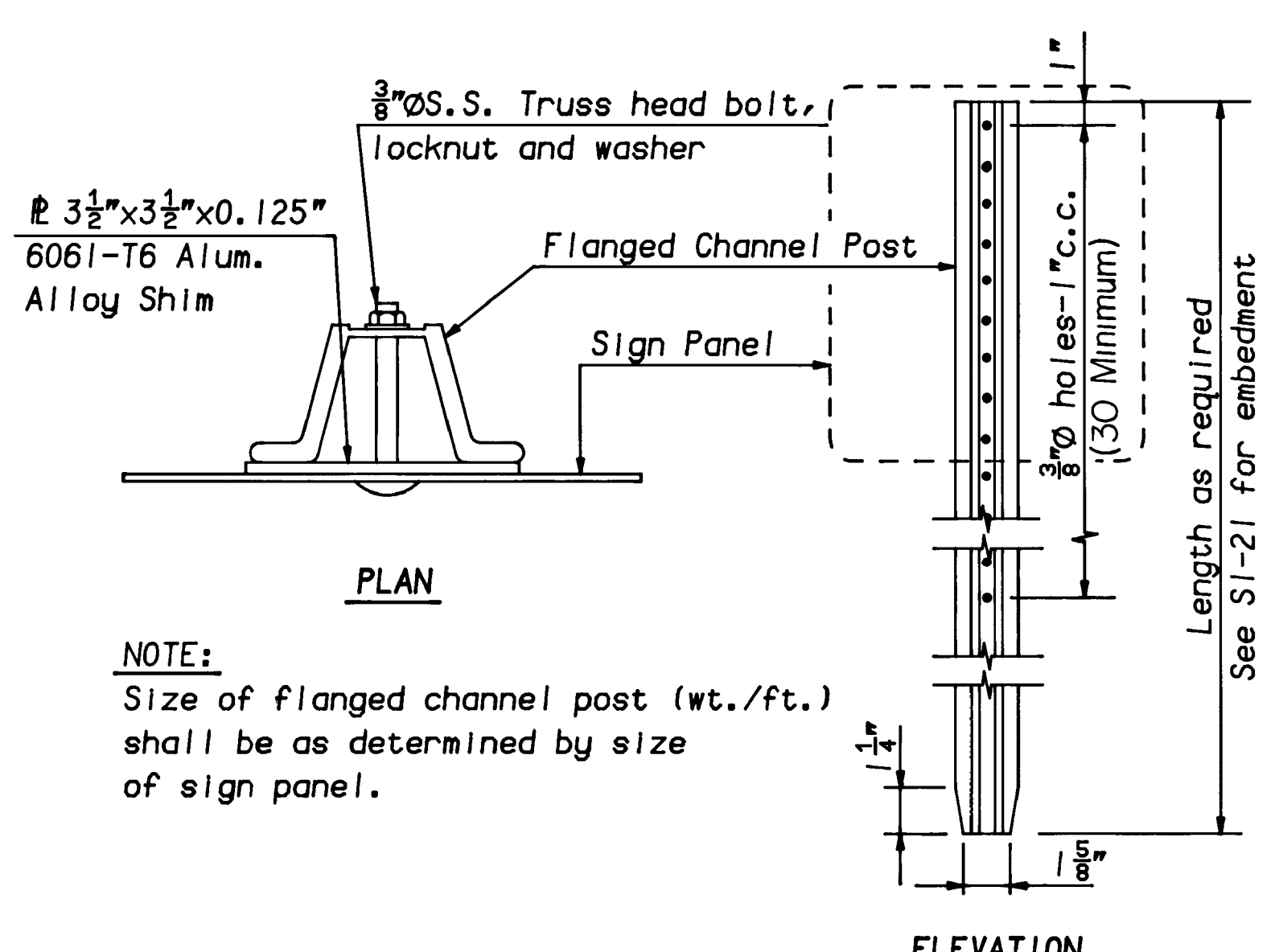
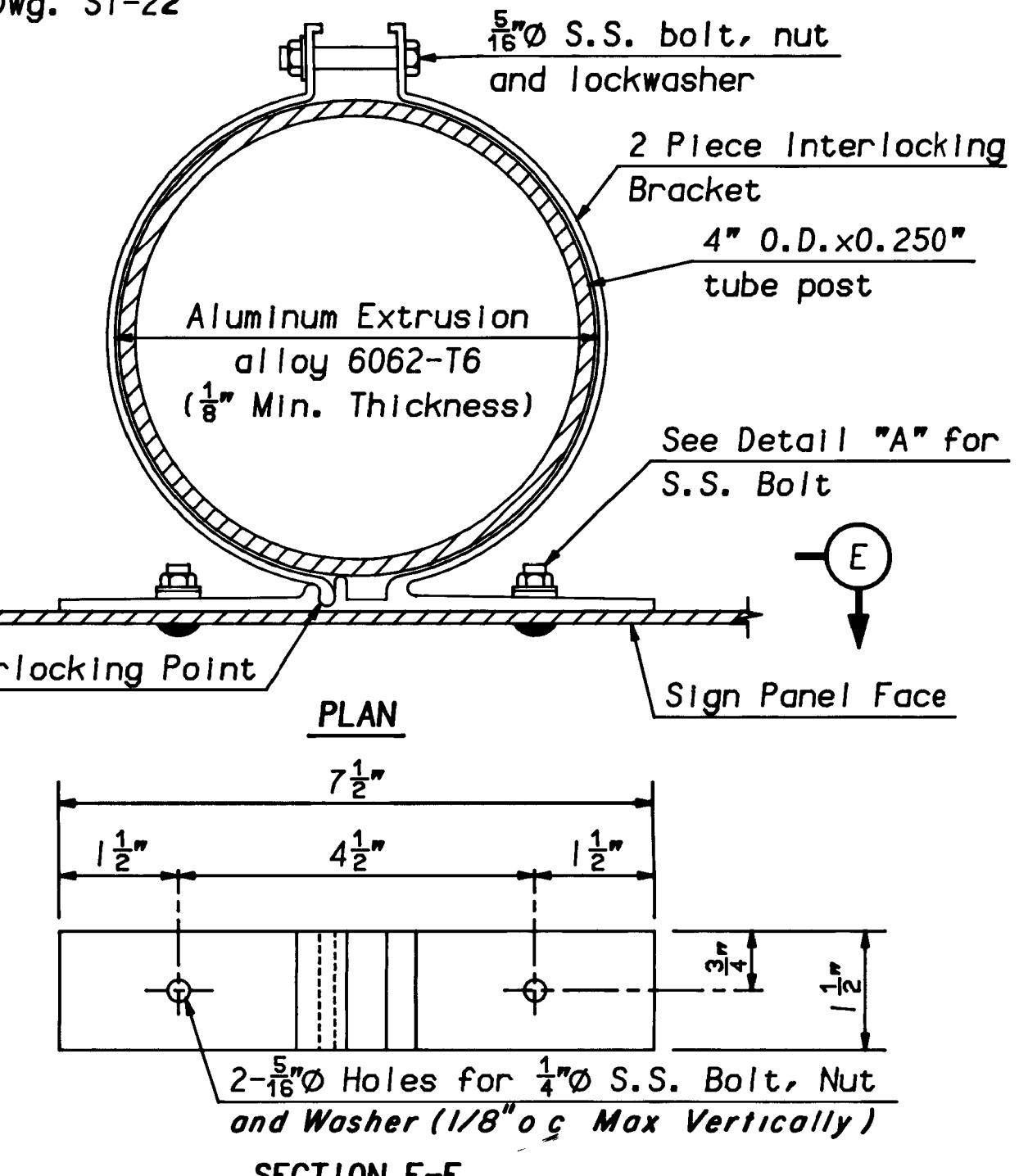


**ELEVATION
GROUND MOUNTED SIGN
ALUMINUM TUBE POST**



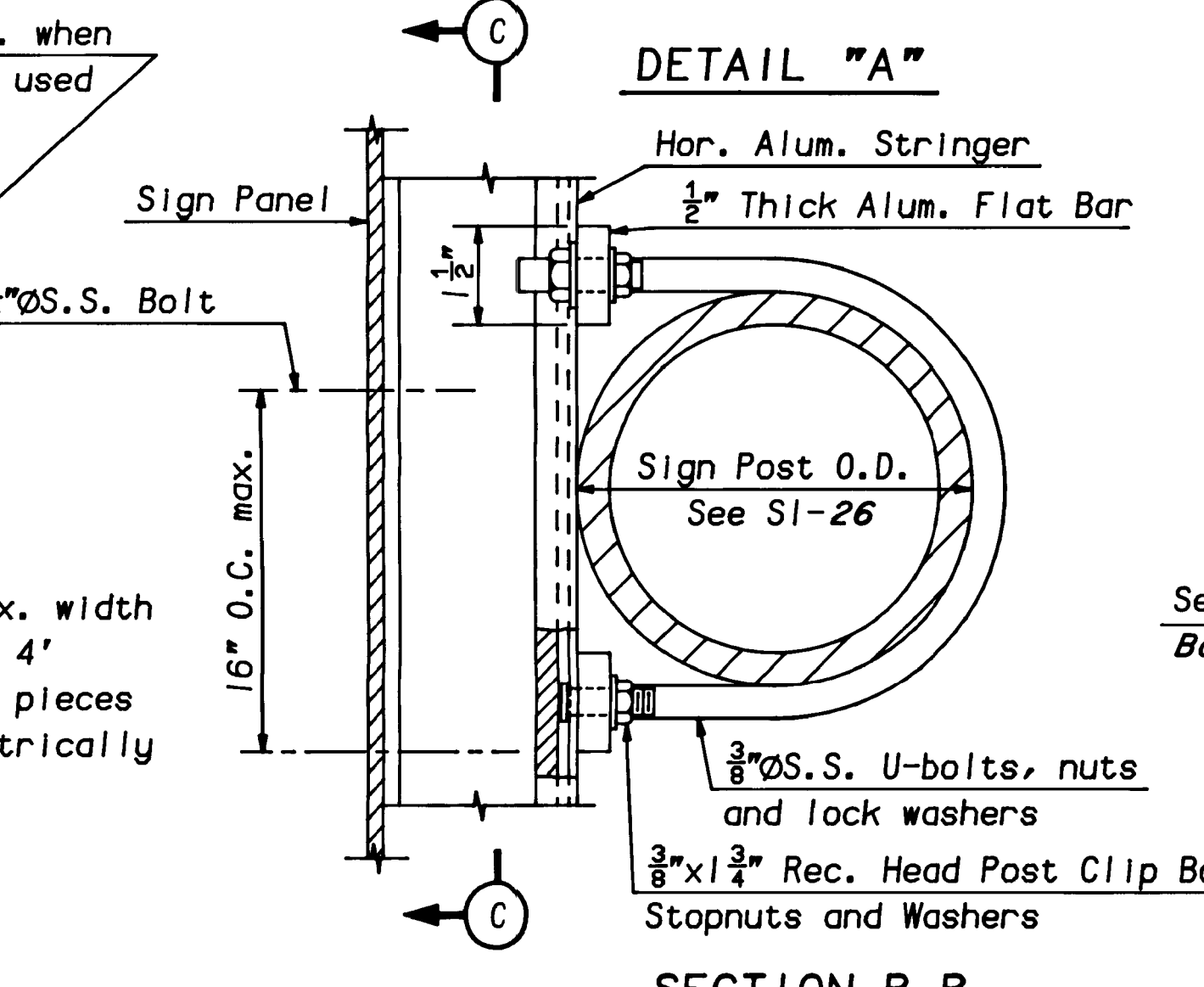
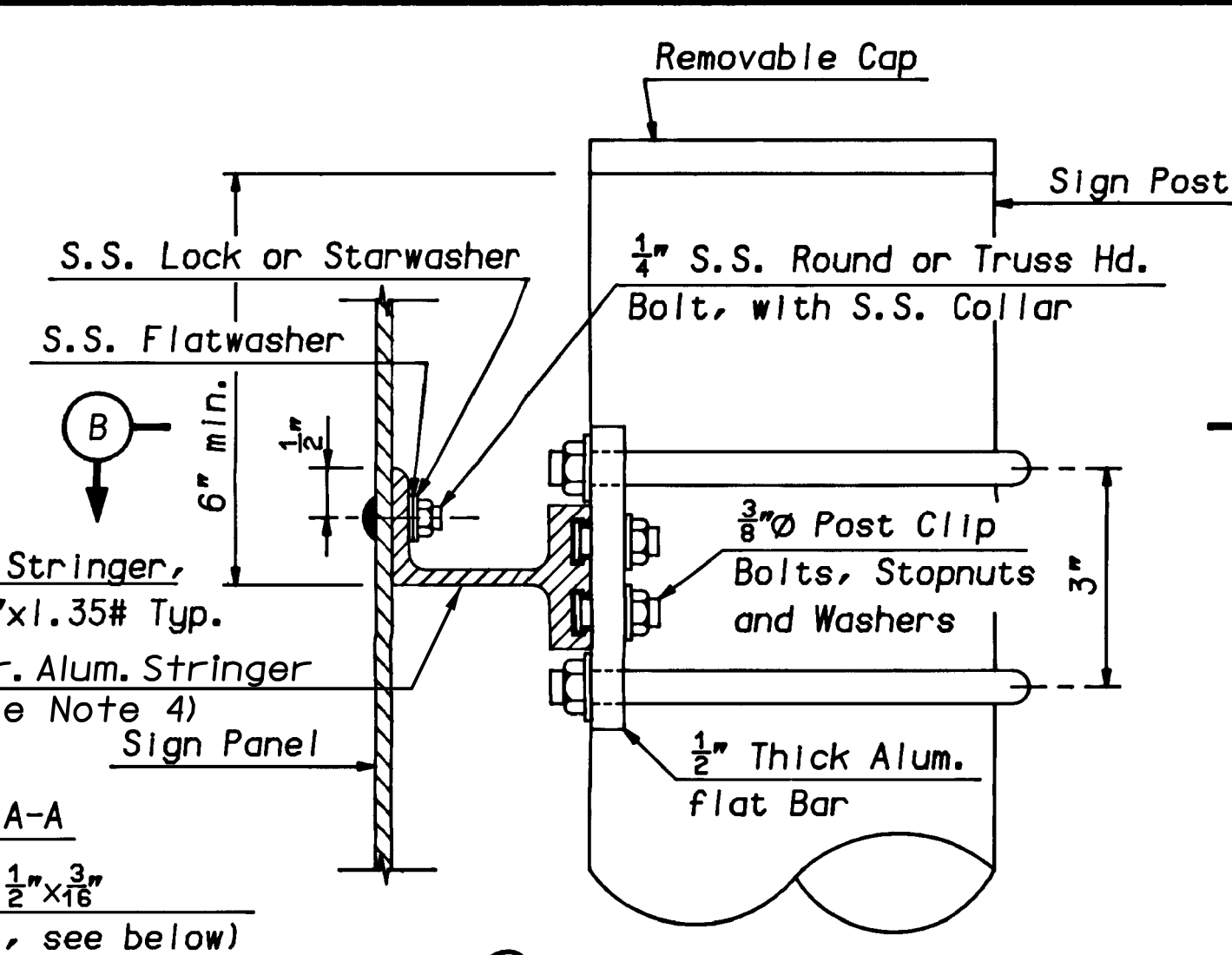
**SINGLE FLANGED CHANNEL
SIGN POST ASSEMBLY**

(For sign mounting height and offset, see "Ground Mounted Sign - Aluminum Tube Post - Elevation" above)

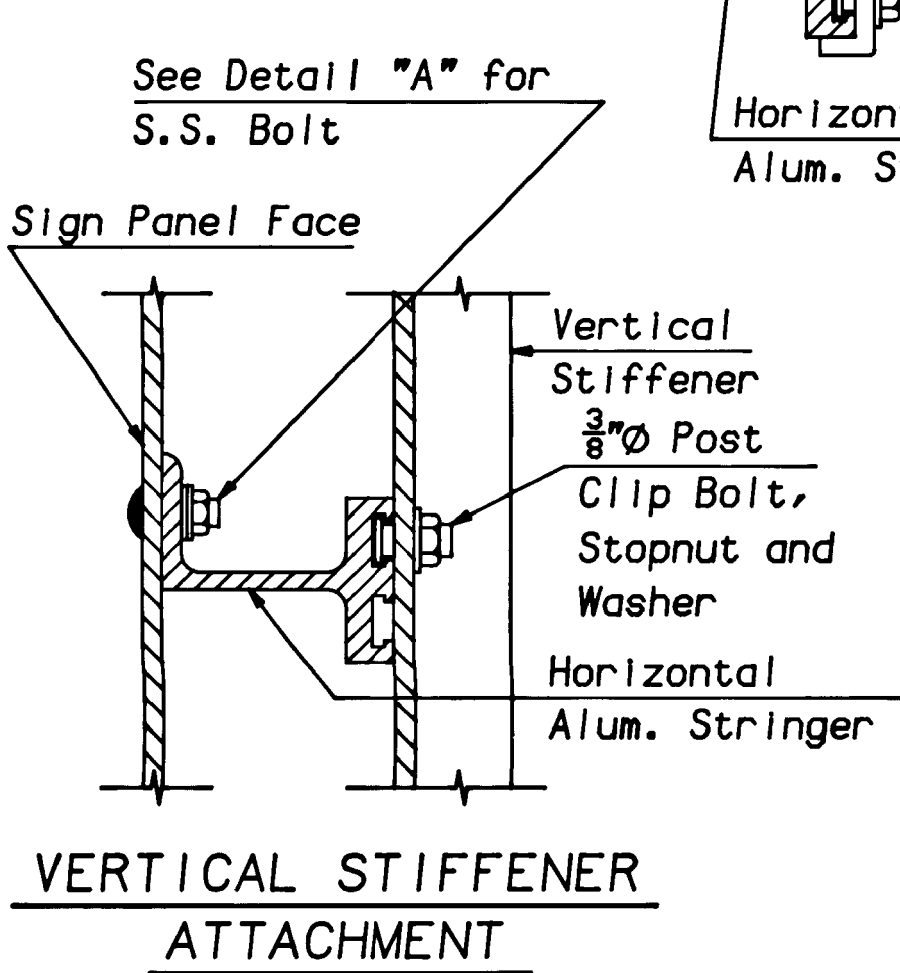


SINGLE ALUMINUM TUBE SIGN POST ASSEMBLY

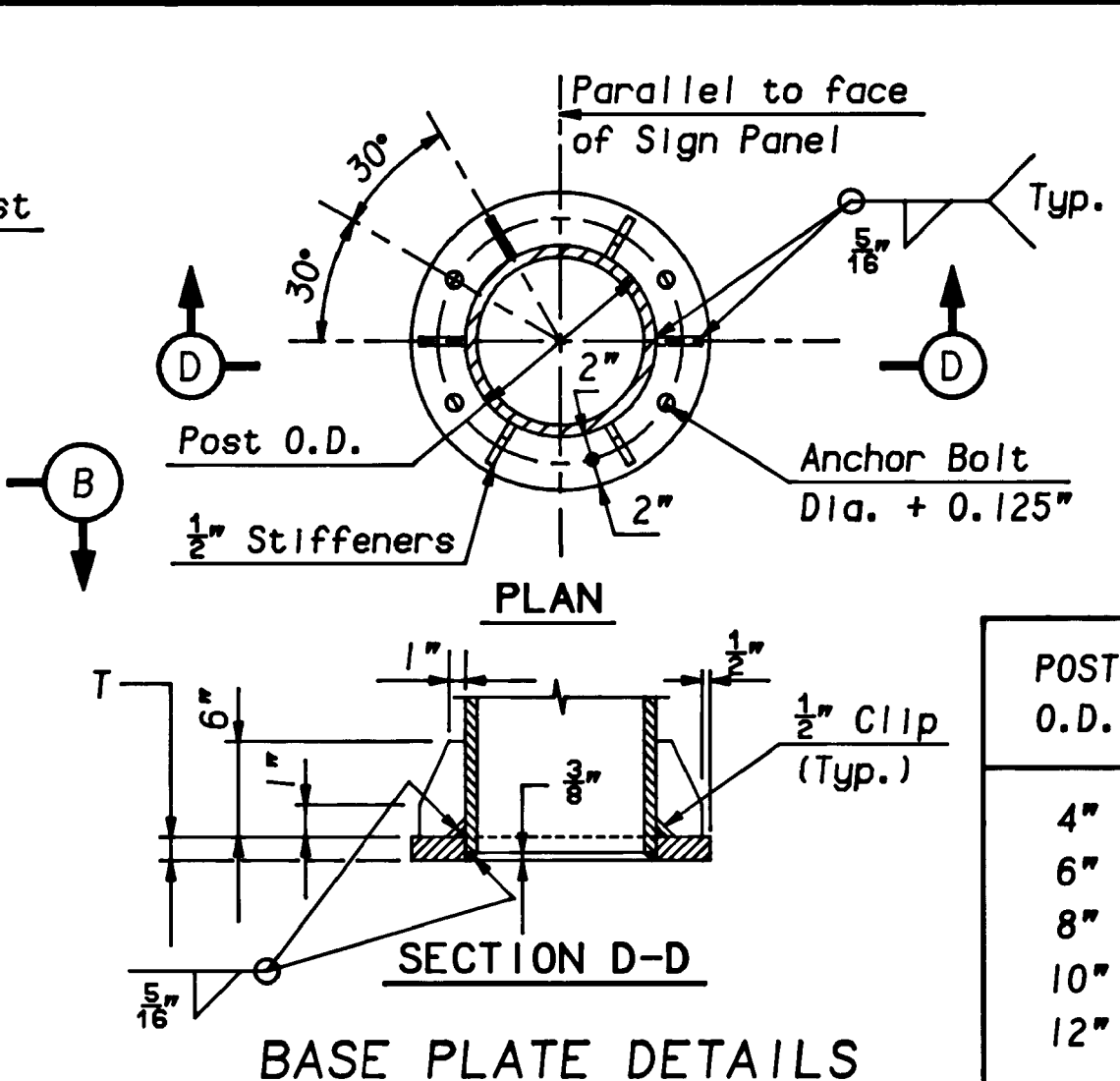
NOTE: If horizontal aluminum stringers are required in accordance with Standard Drawing SI-26, sign to post attachment details shall be similar to those shown in Detail "A".



SECTION B-B

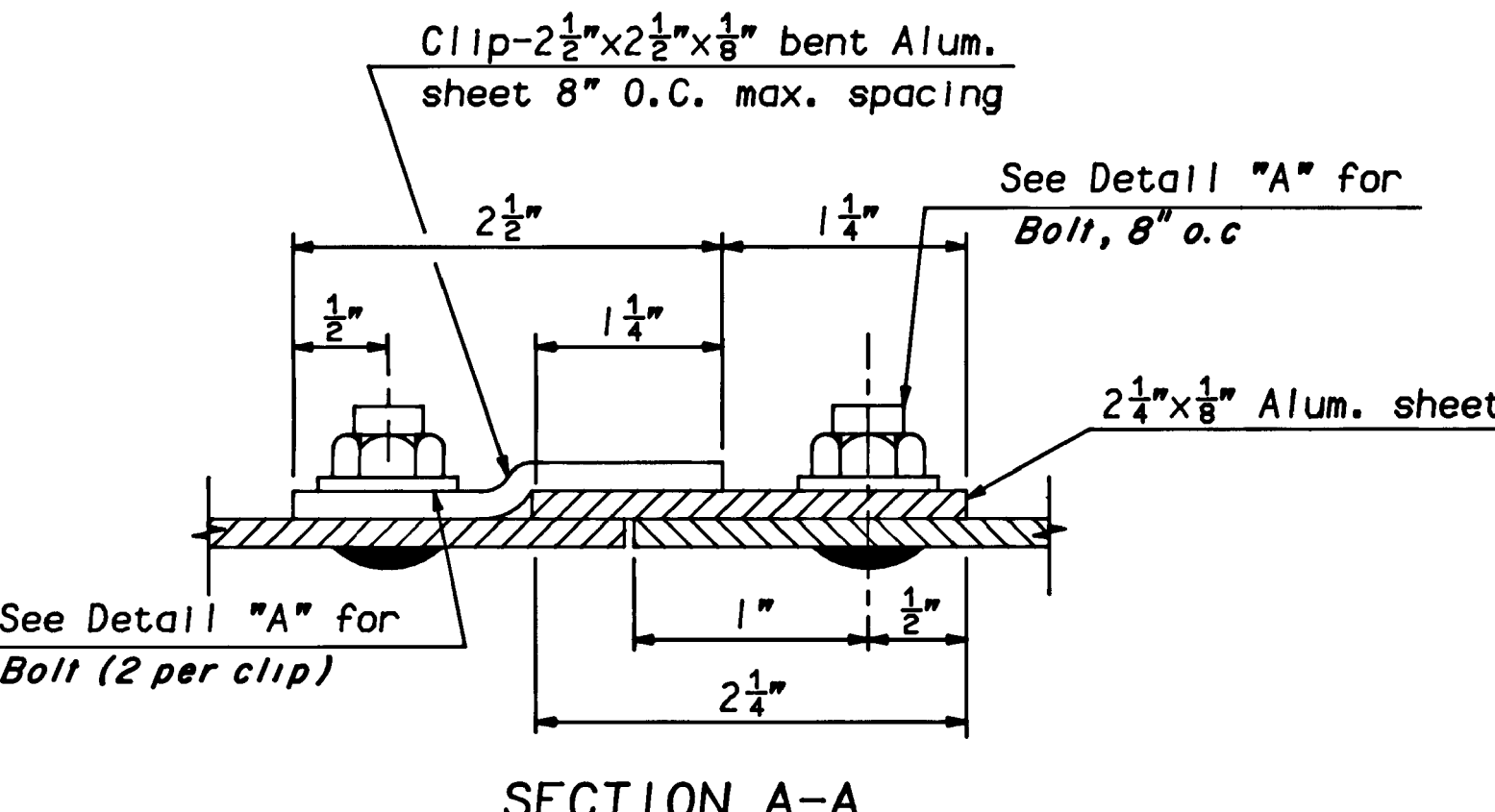


VERTICAL STIFFENER ATTACHMENT

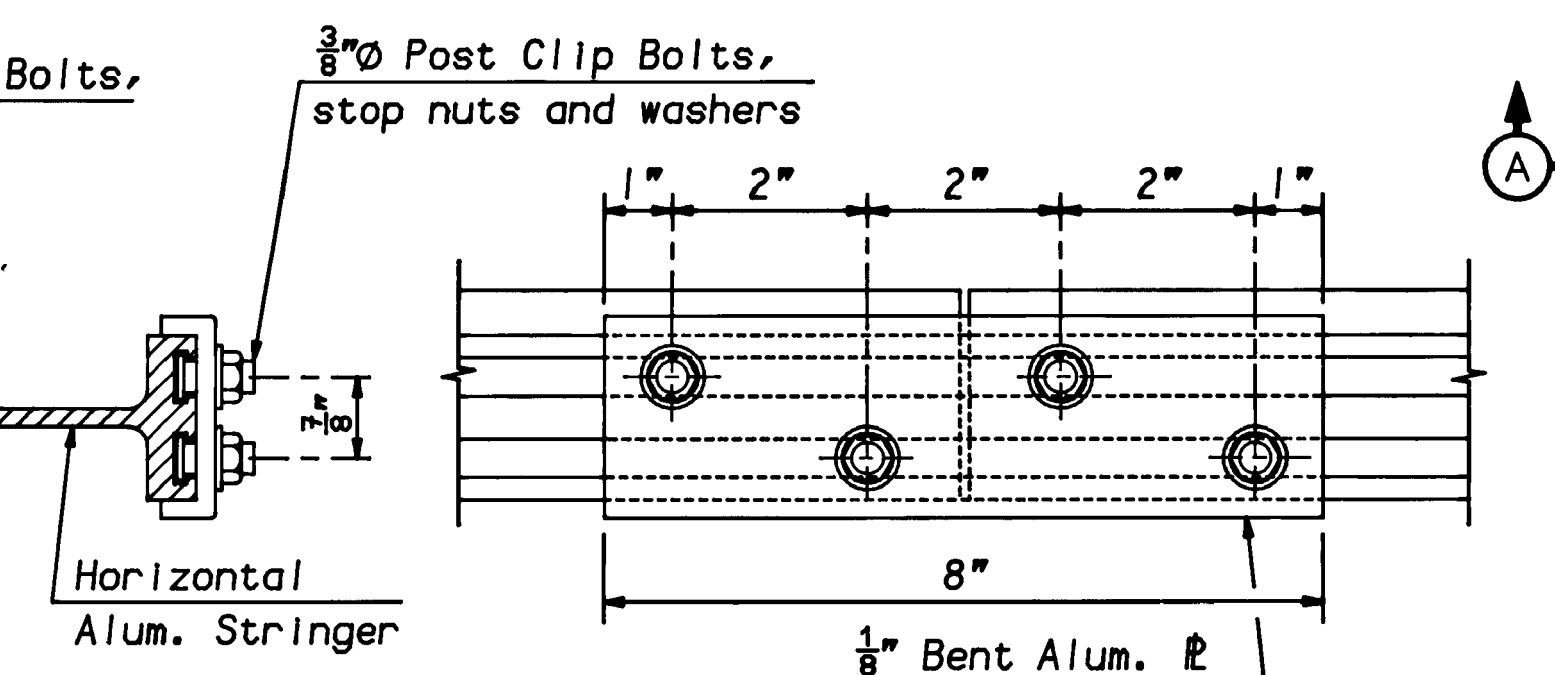


BASE PLATE DETAILS

POST O.D.	ANCHOR BOLT DIA.	BASE PLATE DIM. T
4"	1/2"	1"
6"	3/4"	1 1/8"
8"	7/8"	1 1/4"
10"	1"	1 3/8"
12"	1"	1 5/8"



SECTION A-A

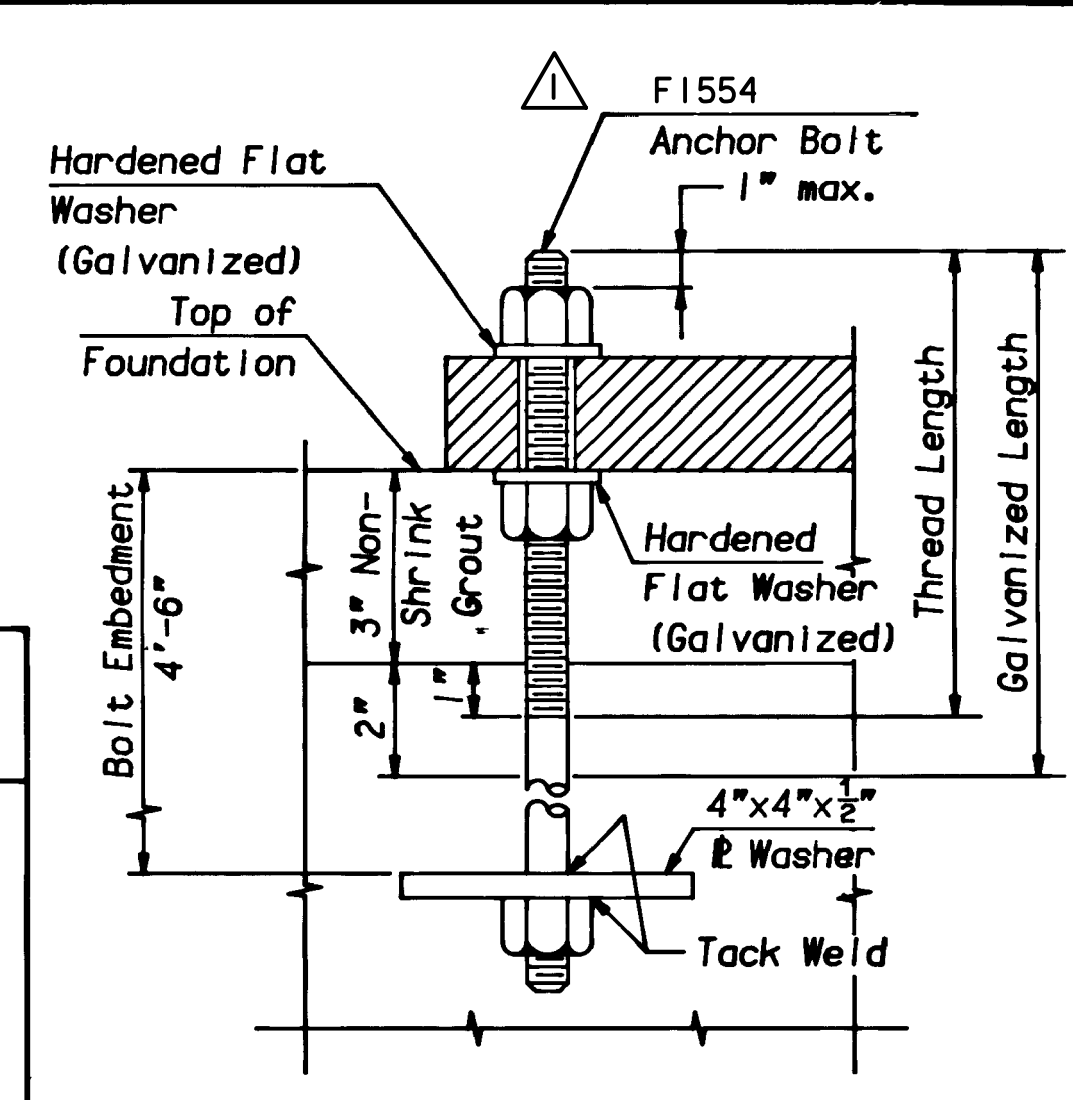


HORIZONTAL STRINGER SPLICE

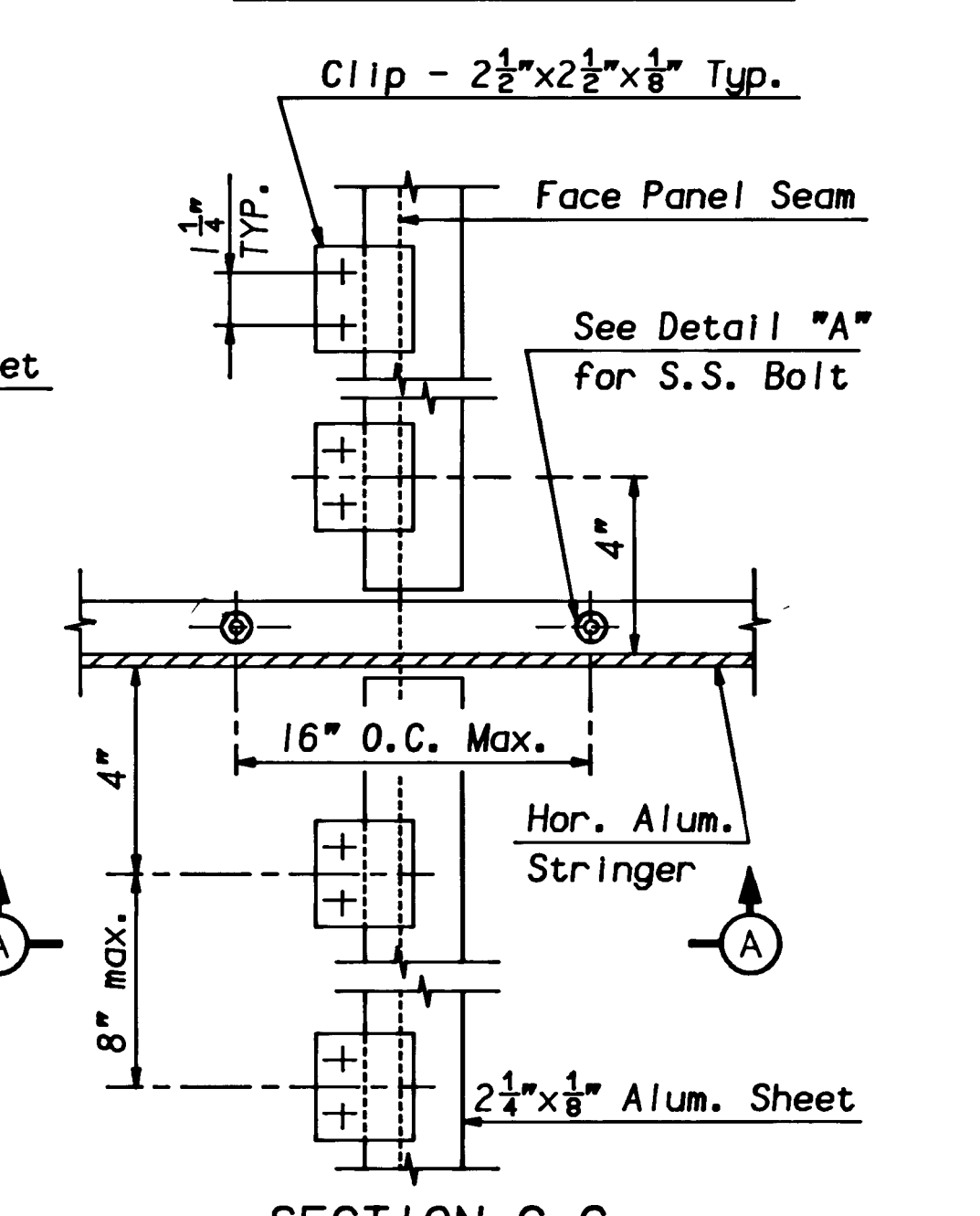
(Above detail to be used only upon approval of Engineer.) (See Note 4)

NOTES:

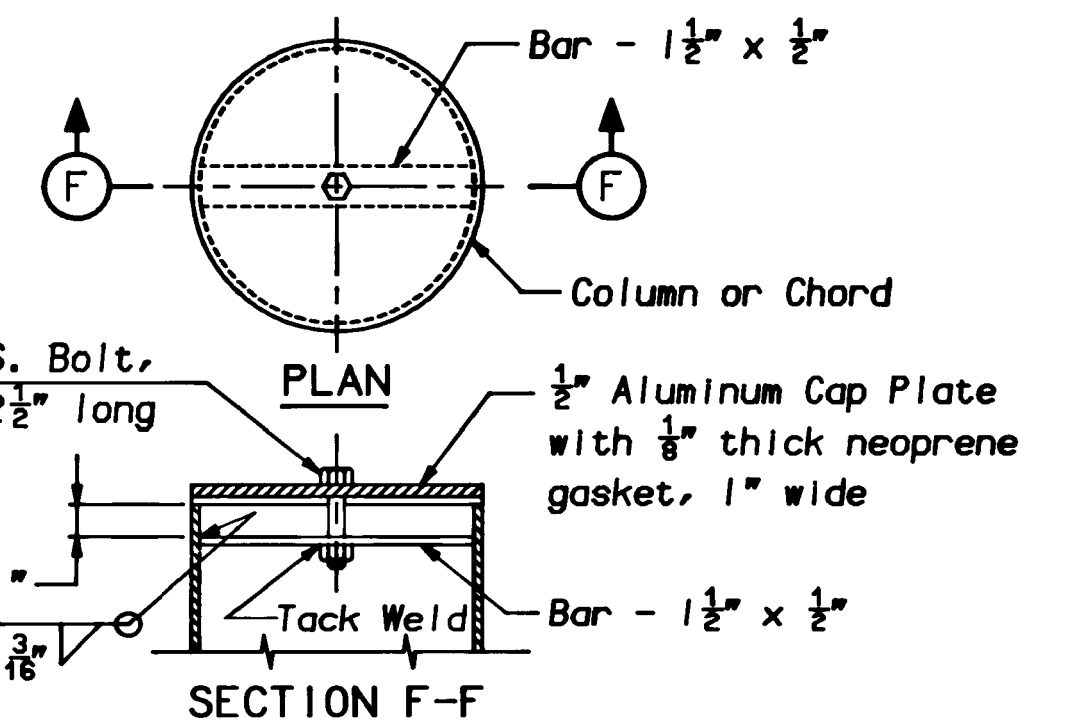
- All material to be Aluminum Alloy 6061-T6 unless otherwise noted.
- S.S. denotes Stainless Steel.
- All material and fabrication shall conform to the current edition of the A.A.S.H.T.O. "Standard Specifications for Structural Supports for Highway Signs, Luminaires and Traffic Signals."
- The Fabricator shall submit for approval a shop drawing showing all sign panel stringers, stringer splice locations and details, and all sign mounting hardware.



ANCHOR BOLT DETAIL



SECTION C-C



REMOVABLE CAP DETAILS



APP	NO	DATE	REVISION
	2	03/26	STRINGER UPDATES
	1	12/09	REVISED ANCHOR BOLT ASTM STANDARD
		3/97	ORIGINAL DRAWING

NEW JERSEY TURNPIKE AUTHORITY
NEW JERSEY TURNPIKE

GROUND MOUNTED SIGN DETAILS

OFFICE OF THE CHIEF ENGINEER
NEW BRUNSWICK NEW JERSEY

**1996 STANDARD
DRAWING SI-13**