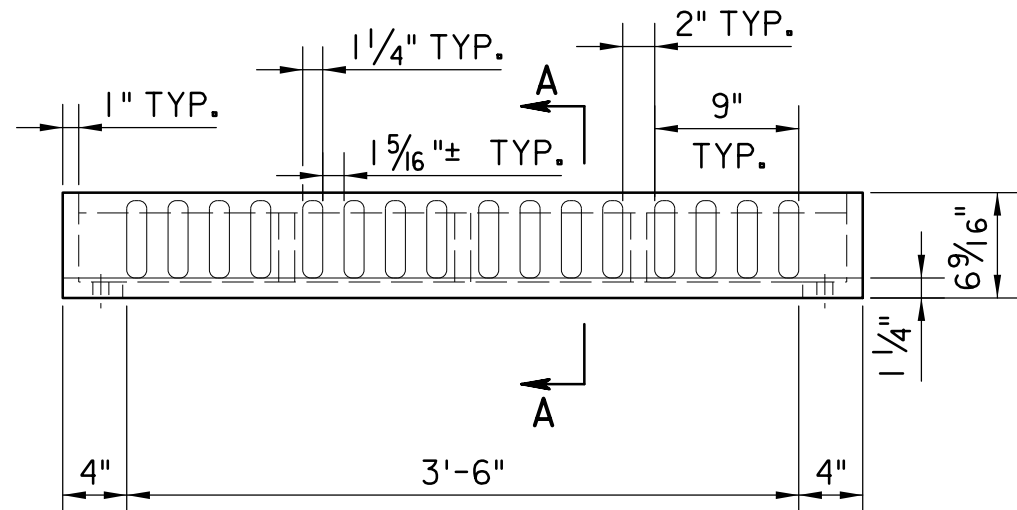
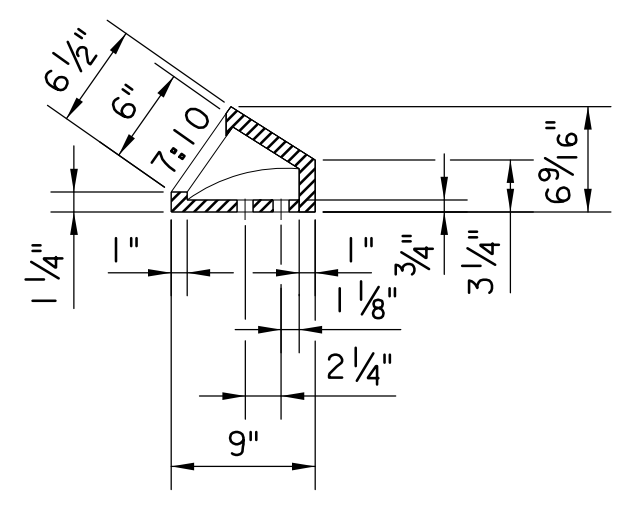


PLAN

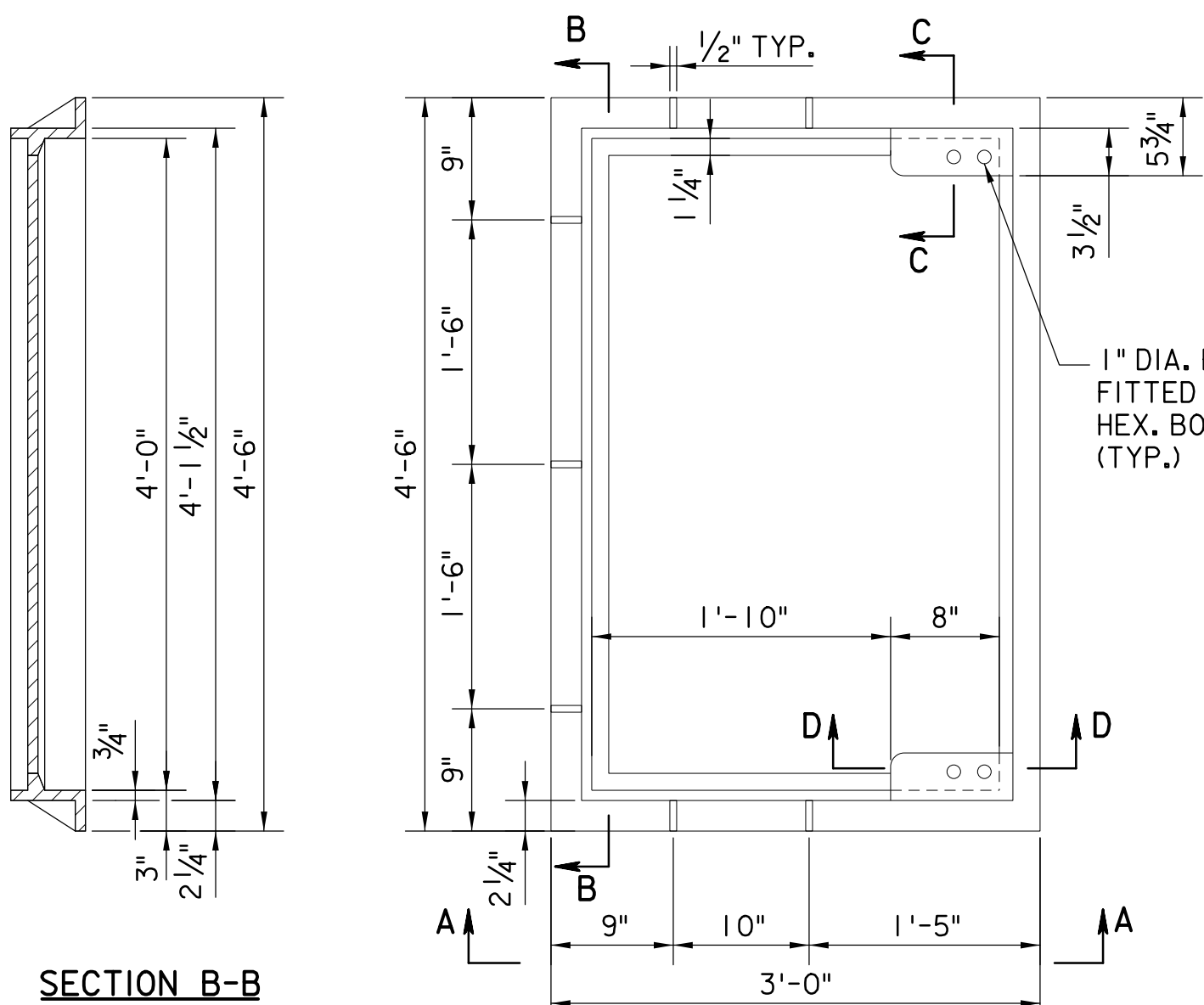
WEIGHT OF CURB PIECE = 190 LBS



ELEVATION

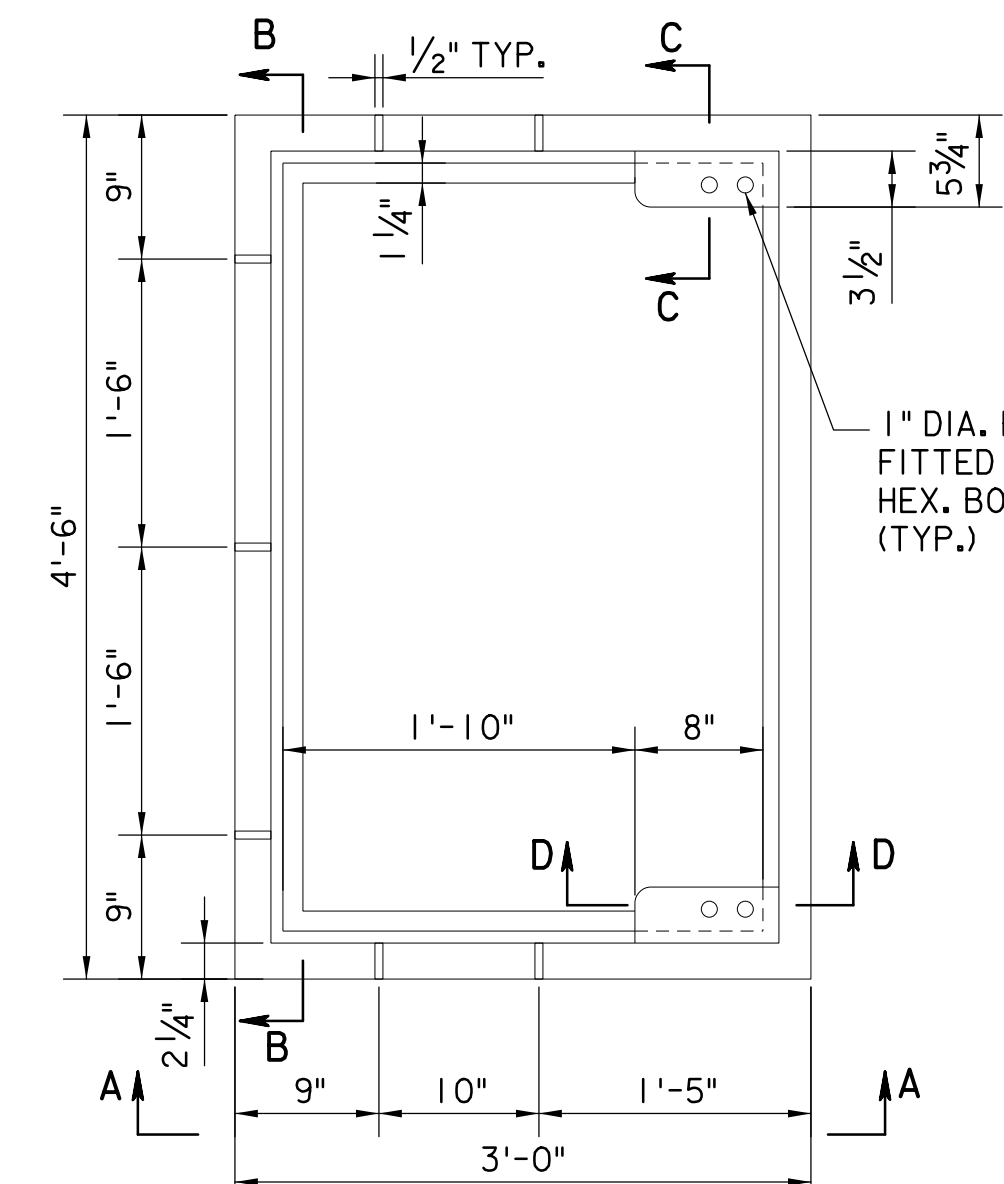


SECTION A-A

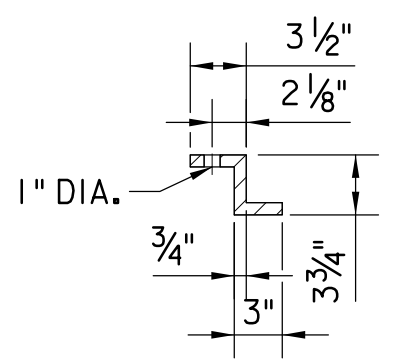


SECTION B-B

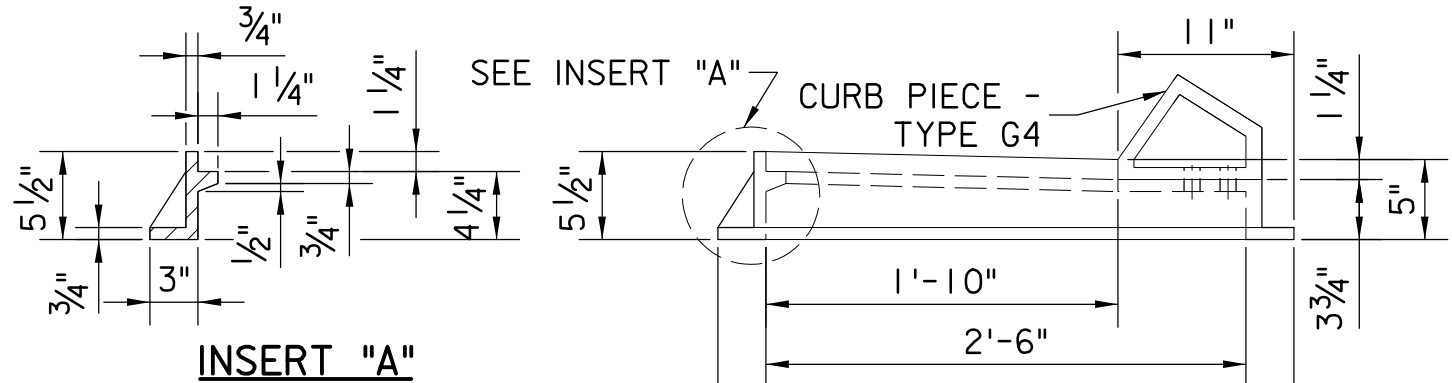
WEIGHT OF FRAME = 285 LBS



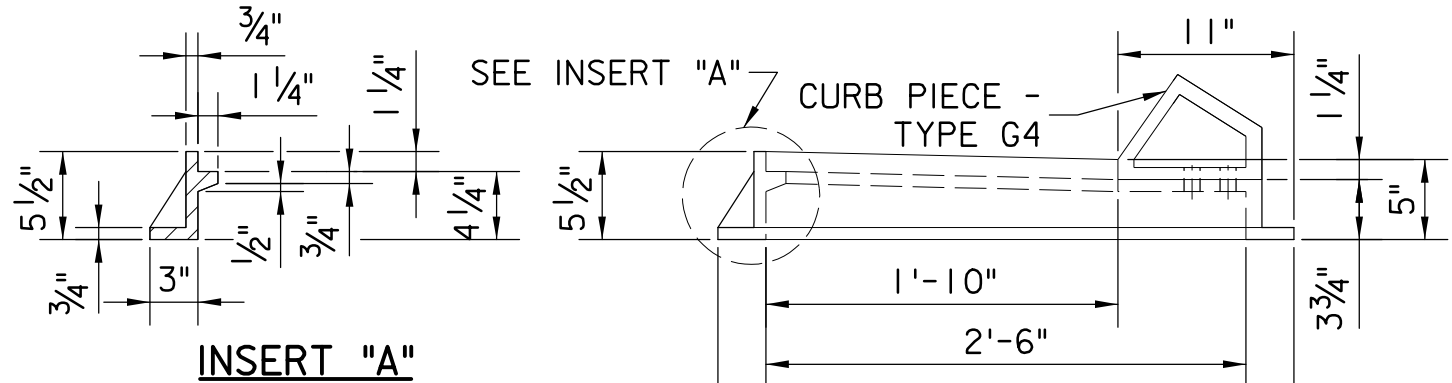
PLAN



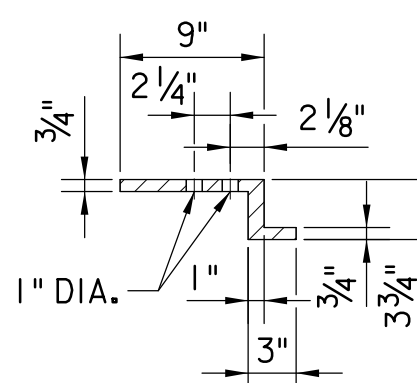
SECTION C-C



INSERT "A"



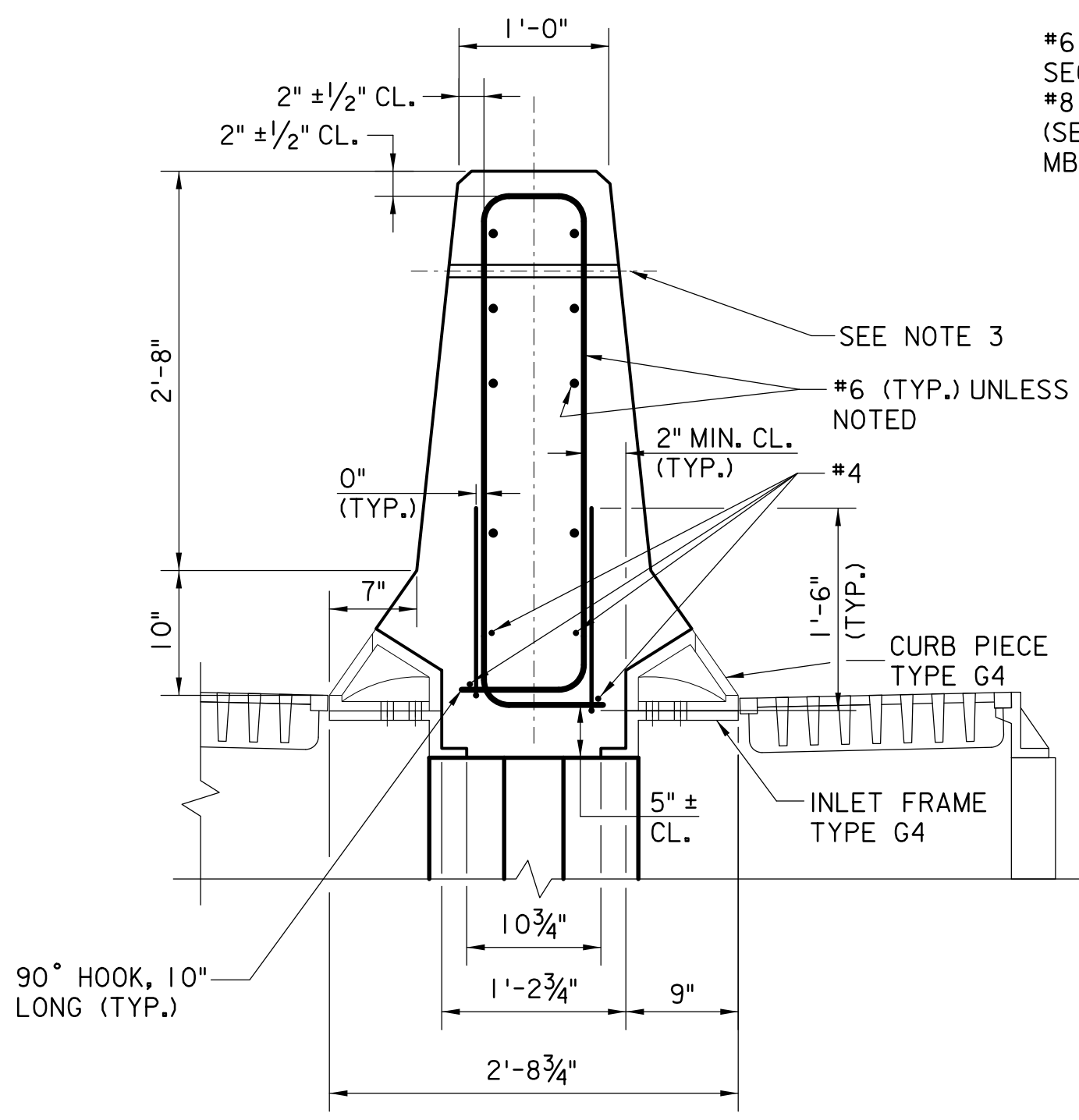
ELEVATION A-A



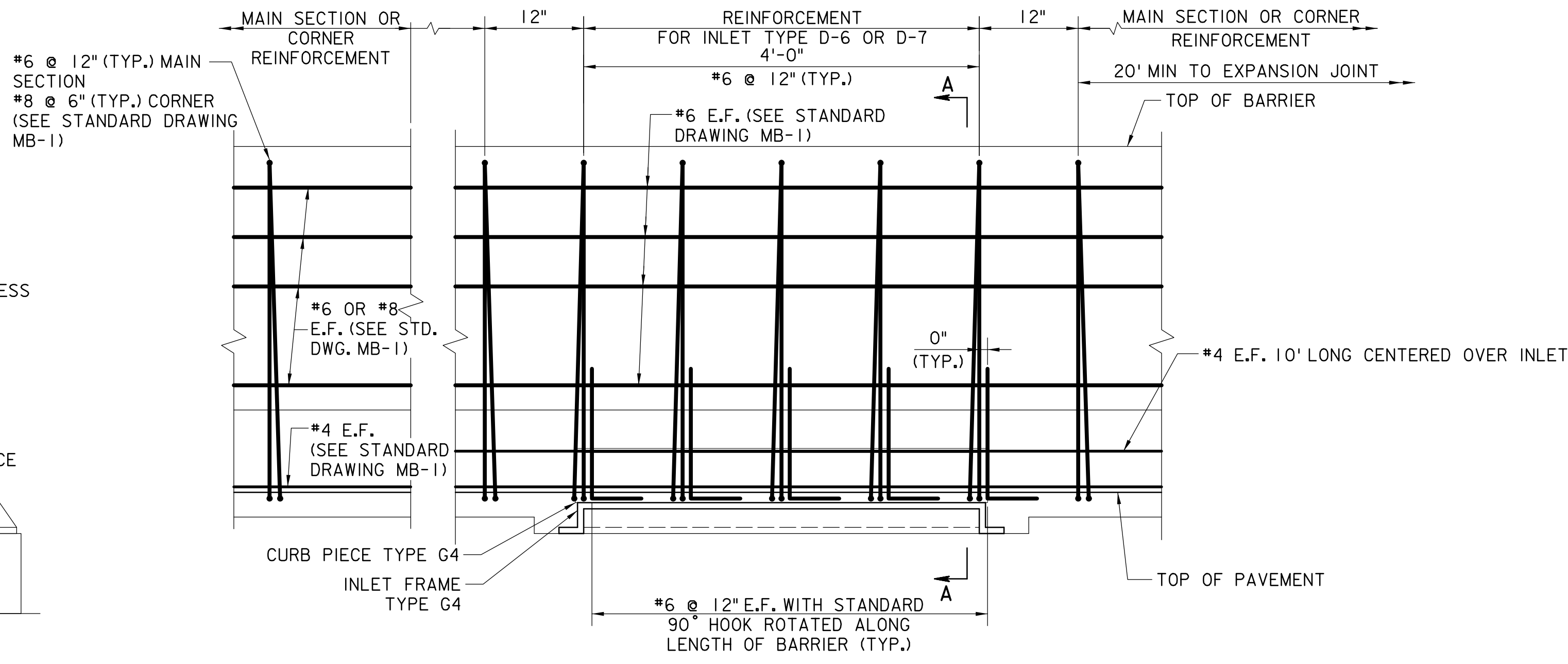
SECTION D-D

CURB PIECE - TYPE G4

FRAME AND GRATING - TYPE G4



SECTION A-A

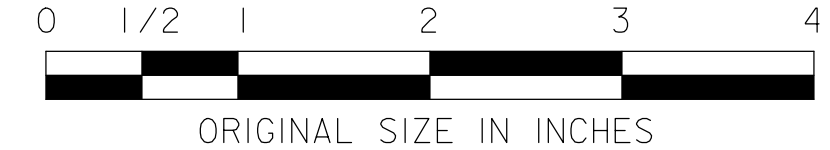


ELEVATION

INLET TYPE D-6/D-7 MODIFICATIONS TO CONCRETE MEDIAN BARRIER, ROADWAY (INLET TYPE D-7 SHOWN, INLET TYPE D-6 SIMILAR)

NOTES:

1. CONCRETE MEDIAN BARRIER SHALL CONFORM TO SPECIFICATION SECTION 508. REFER TO STANDARD DRAWING MB-1 FOR ADDITIONAL DETAILS AND INFORMATION.
2. CURB PIECES SHALL NOT BE CONSTRUCTED WITHIN THE CORNER REINFORCEMENT ZONES AS SHOWN IN STANDARD DRAWING MB-1.
3. THE 1" DIA. HOLE SHALL NOT BE LOCATED WITHIN 20 FT OF AN INLET. SEE STANDARD DRAWING MB-1 FOR ADDITIONAL INFORMATION.
4. WORK THIS DRAWING WITH STANDARD DRAWING DR-7A.



NEW JERSEY TURNPIKE AUTHORITY  
**NEW JERSEY TURNPIKE  
 GARDEN STATE PARKWAY**  
 STANDARD DRAWINGS

---

**CAST FRAME AND GRATING DETAILS - 2**

---

OFFICE OF THE CHIEF ENGINEER  
 NEW JERSEY TURNPIKE AUTHORITY  
 WOODBRIDGE, NEW JERSEY

STANDARD DRAWING

**DR-2A**

0	ORIGINAL DRAWING	03/26
REV.	DESCRIPTION	DATE