

New Jersey Turnpike Authority

P.O. Box 5042, Woodbridge, NJ 07095



March 12, 2026

Document Change Announcement

Standard Drawings

Inlet Curb Piece

DCA2026SD-01

Subject: Revisions to

Drawing DR-7 Barrier Curb Inlet Details

Drawing DR-2A Cast Frame and Grating Details - 2

Drawing DR-7A Barrier Curb and Inlet Details - 2

Description of Change:

Barrier curb inlet details have been developed to integrate curb openings for drainage inlets with the Authority's standard concrete median barrier. Inlets Type D-6 shall be used along single faced barriers when an inlet is only necessary on one side of a concrete median barrier. Inlets Type D-7 shall be used along concrete median barrier when inlets are needed on both sides of the barrier. Both inlet types will utilize the Authority's standard Bicycle Safe Grates. Design Manual is updated to identify the types of inlets used by the Authority to match the updated details, and direct when Inlet Types D-4 and D-5 may still be used. DCAs to the Standard Drawings and Design Manual are released concurrently to address this.

Notice to New Jersey Turnpike Authority Staff and Design Consultants

Effective immediately, all contracts currently in the design phase shall incorporate the revisions herein. For advertised contracts awaiting the opening of bids this revision shall be incorporated via addendum. Contact your New Jersey Turnpike Authority Project Manager for instruction.

The revisions may be accessed on the Authority's webpage: <https://www.njta.gov/business-hub/professional-services/document-change-announcements/>

Recommended By:

(signature on original)

Lamis T. Malak, P.E.
Deputy Chief Engineer - Design

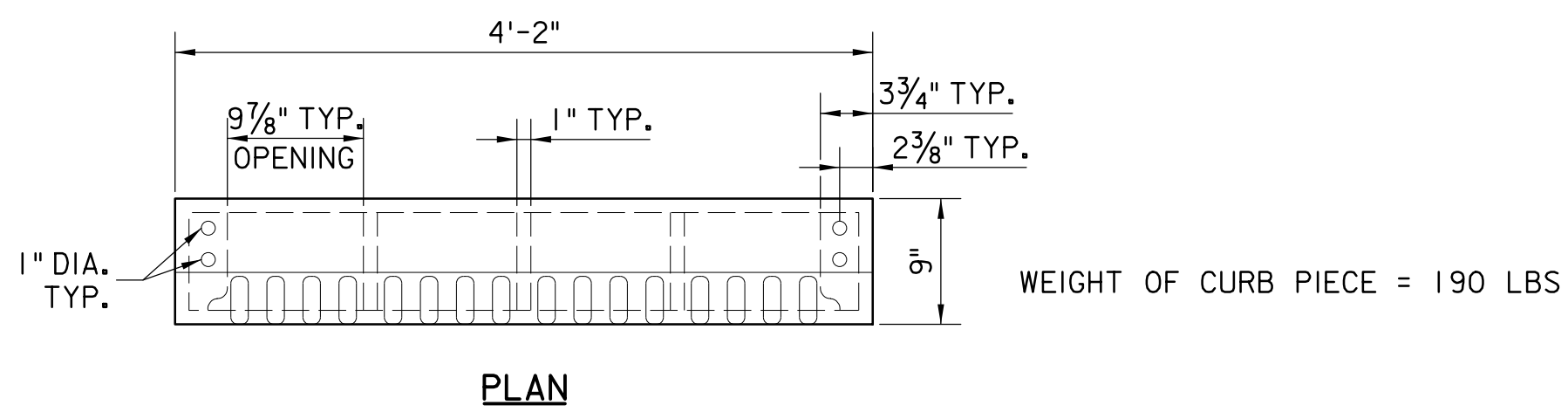
(signature on original)

Robert Higham, P.E.
Deputy Chief Engineer - Construction

Approved By:

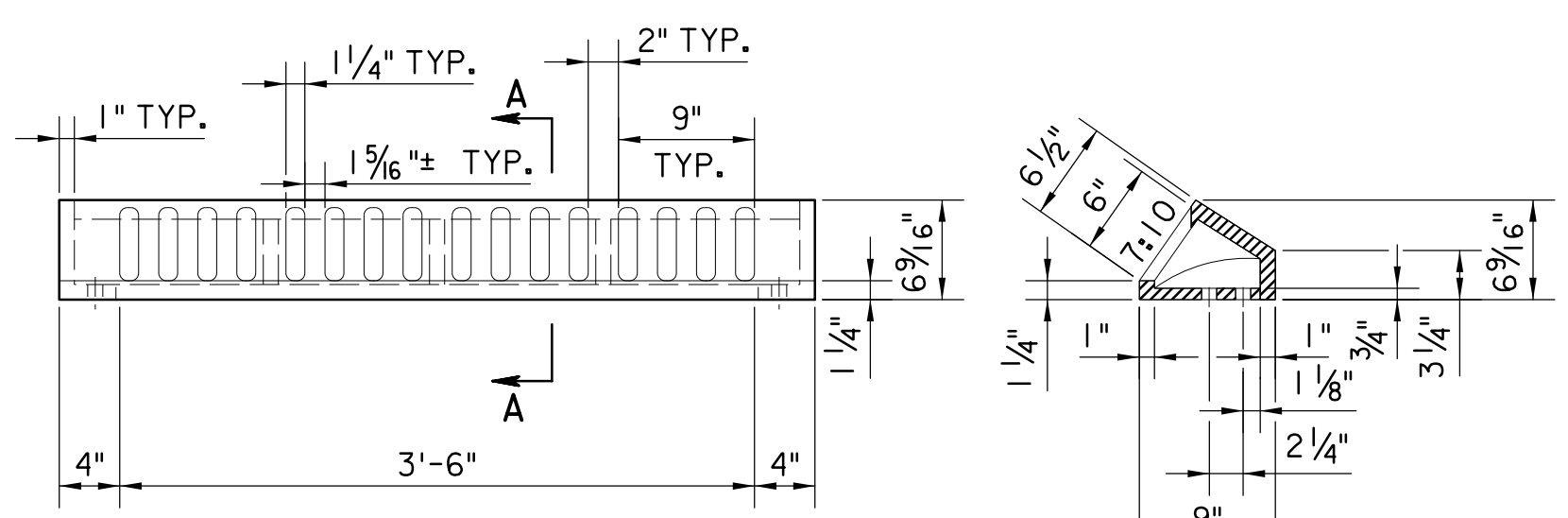
(signature on original)

Daniel L. Hesslein, P.E.
Chief Engineer

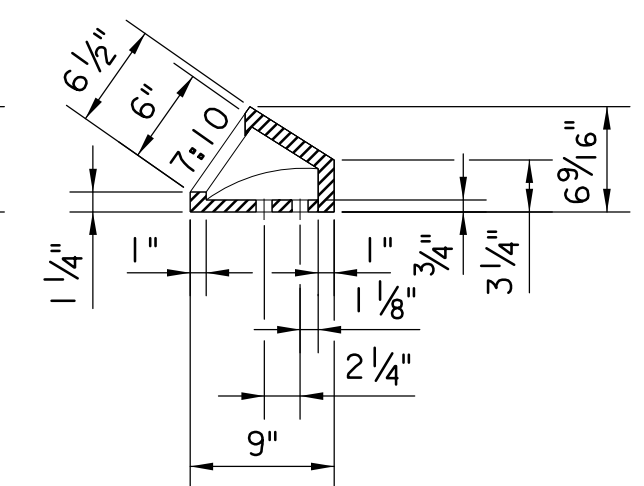


PLAN

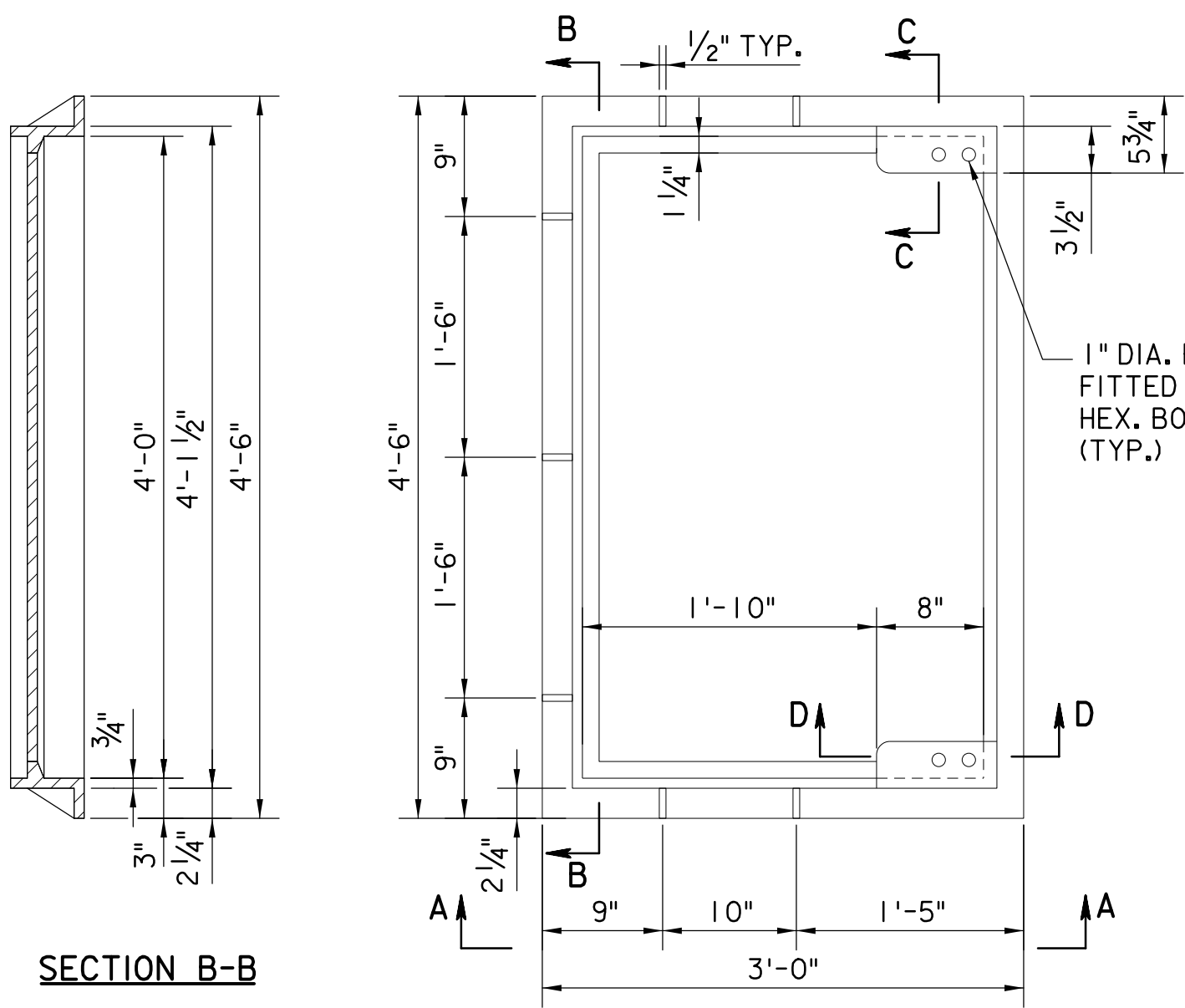
WEIGHT OF CURB PIECE = 190 LBS



ELEVATION



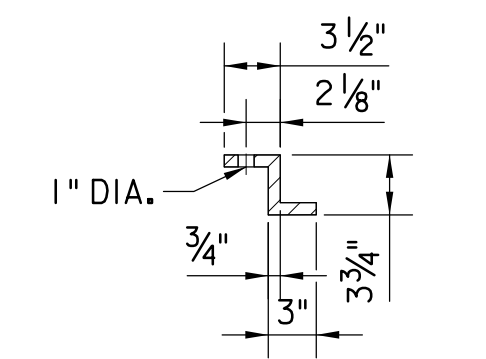
SECTION A-A



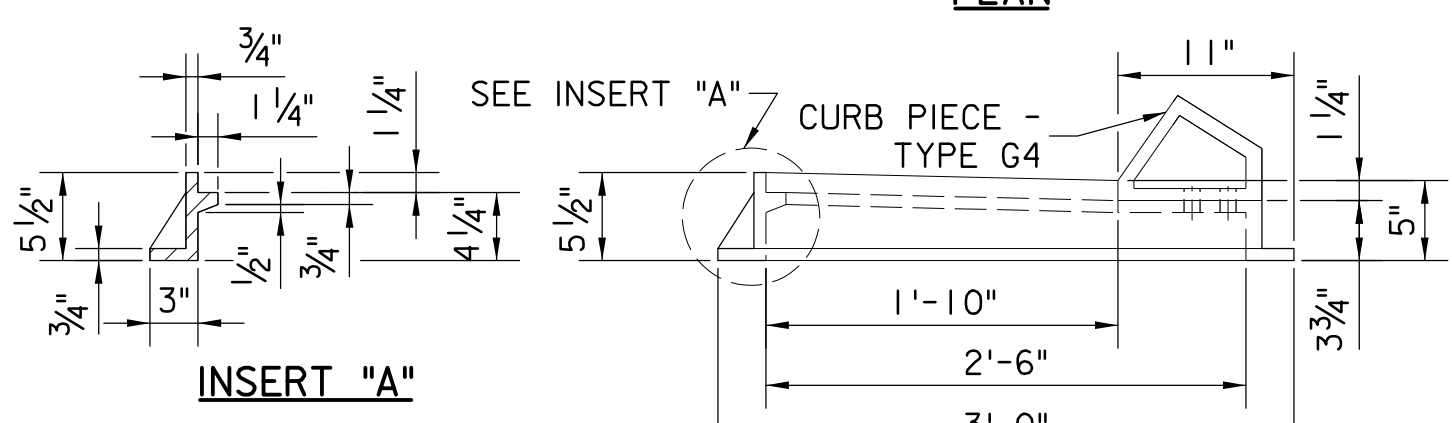
SECTION B-B

PLAN

WEIGHT OF FRAME = 285 LBS

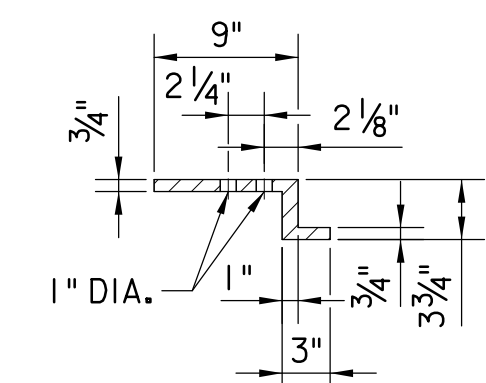


SECTION C-C



INSERT "A"

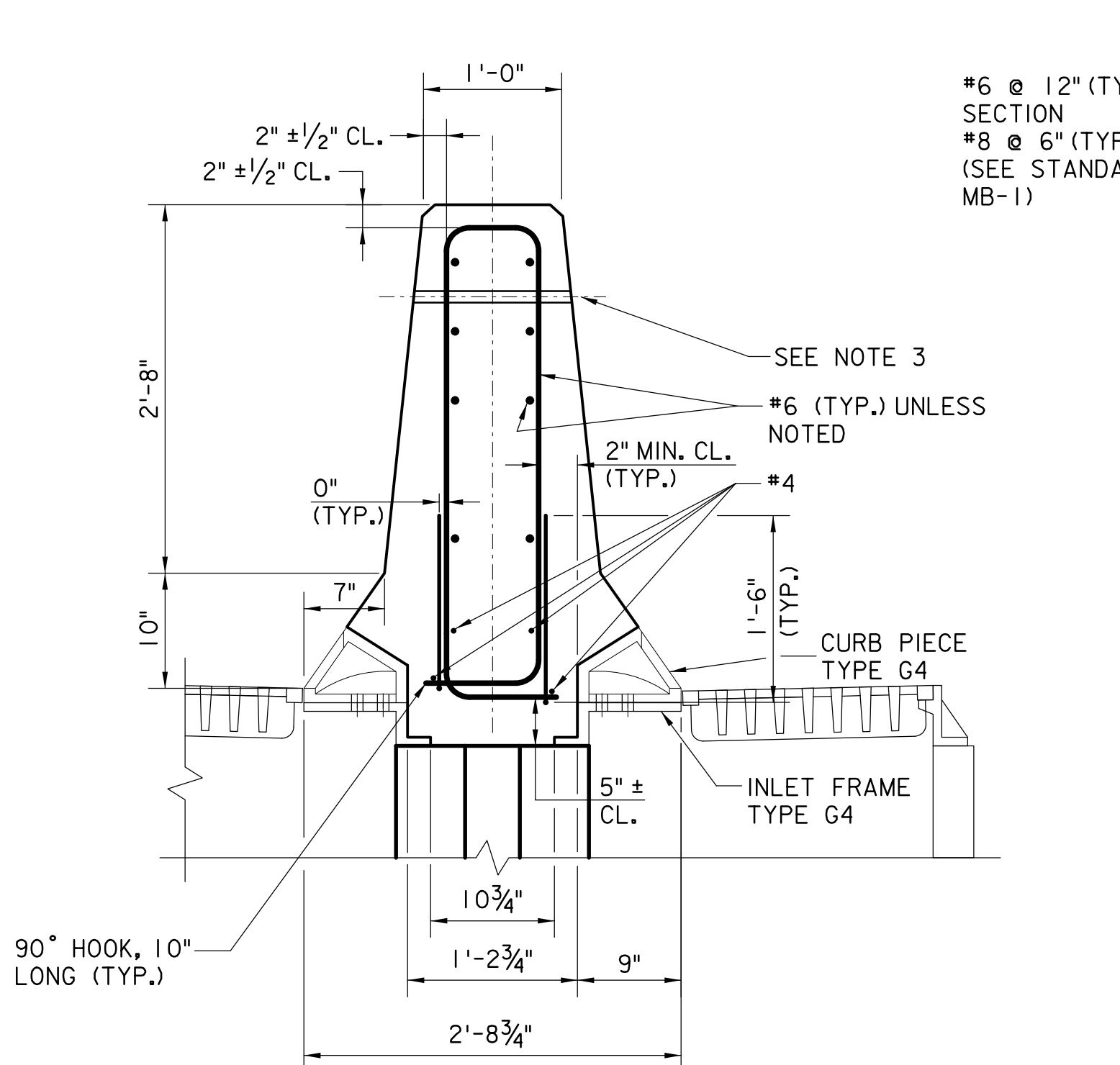
ELEVATION A-A



SECTION D-D

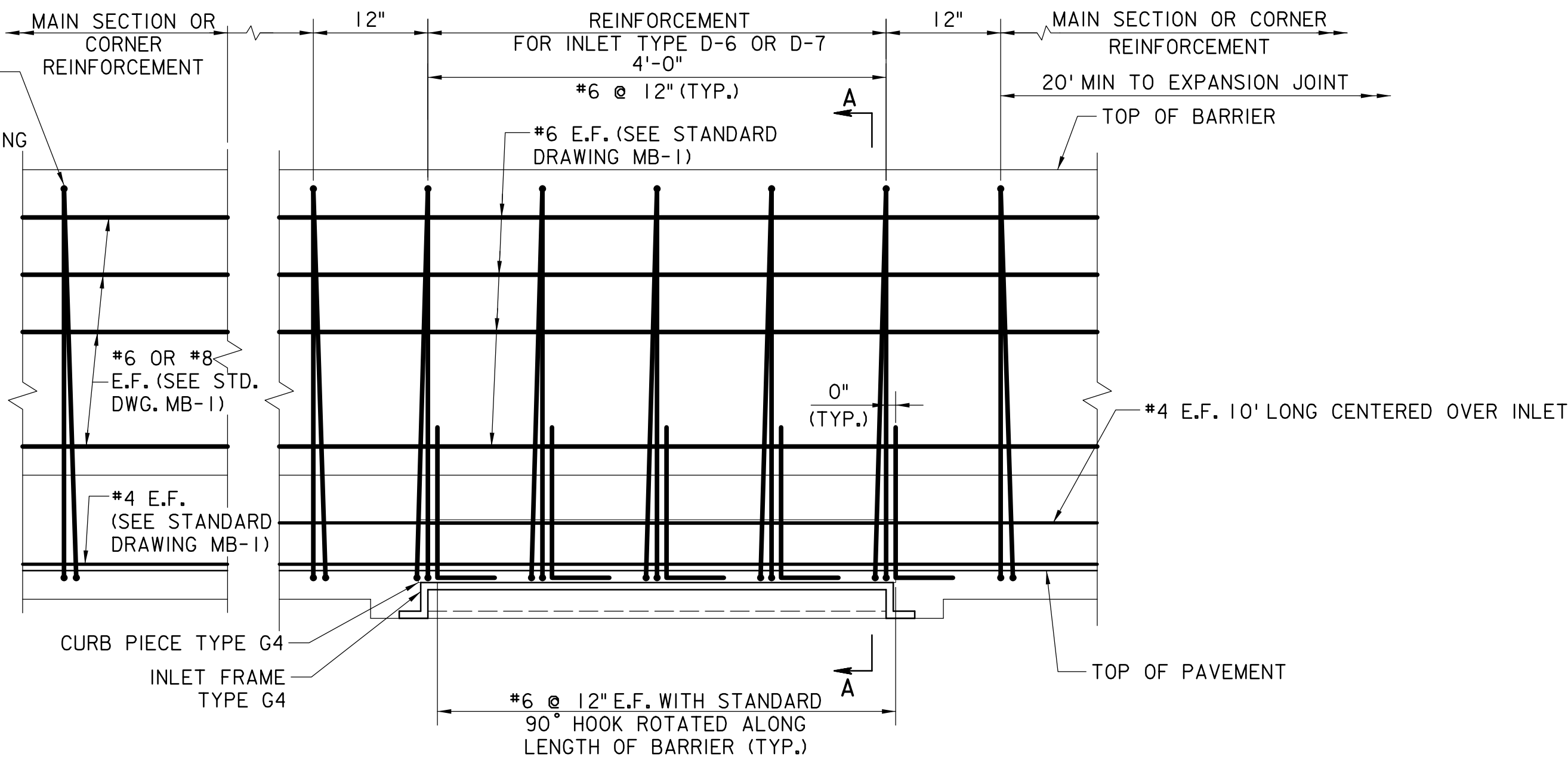
CURB PIECE - TYPE G4

FRAME AND GRATING - TYPE G4



SECTION A-A

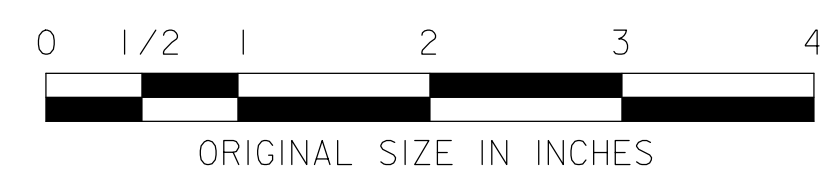
INLET TYPE D-6/D-7 MODIFICATIONS TO CONCRETE MEDIAN BARRIER, ROADWAY (INLET TYPE D-7 SHOWN, INLET TYPE D-6 SIMILAR)



ELEVATION

NOTES:

1. CONCRETE MEDIAN BARRIER SHALL CONFORM TO SPECIFICATION SECTION 508. REFER TO STANDARD DRAWING MB-1 FOR ADDITIONAL DETAILS AND INFORMATION.
2. CURB PIECES SHALL NOT BE CONSTRUCTED WITHIN THE CORNER REINFORCEMENT ZONES AS SHOWN IN STANDARD DRAWING MB-1.
3. THE 1" DIA. HOLE SHALL NOT BE LOCATED WITHIN 20 FT OF AN INLET. SEE STANDARD DRAWING MB-1 FOR ADDITIONAL INFORMATION.
4. WORK THIS DRAWING WITH STANDARD DRAWING DR-7A.



NEW JERSEY TURNPIKE AUTHORITY
**NEW JERSEY TURNPIKE
 GARDEN STATE PARKWAY**
 STANDARD DRAWINGS

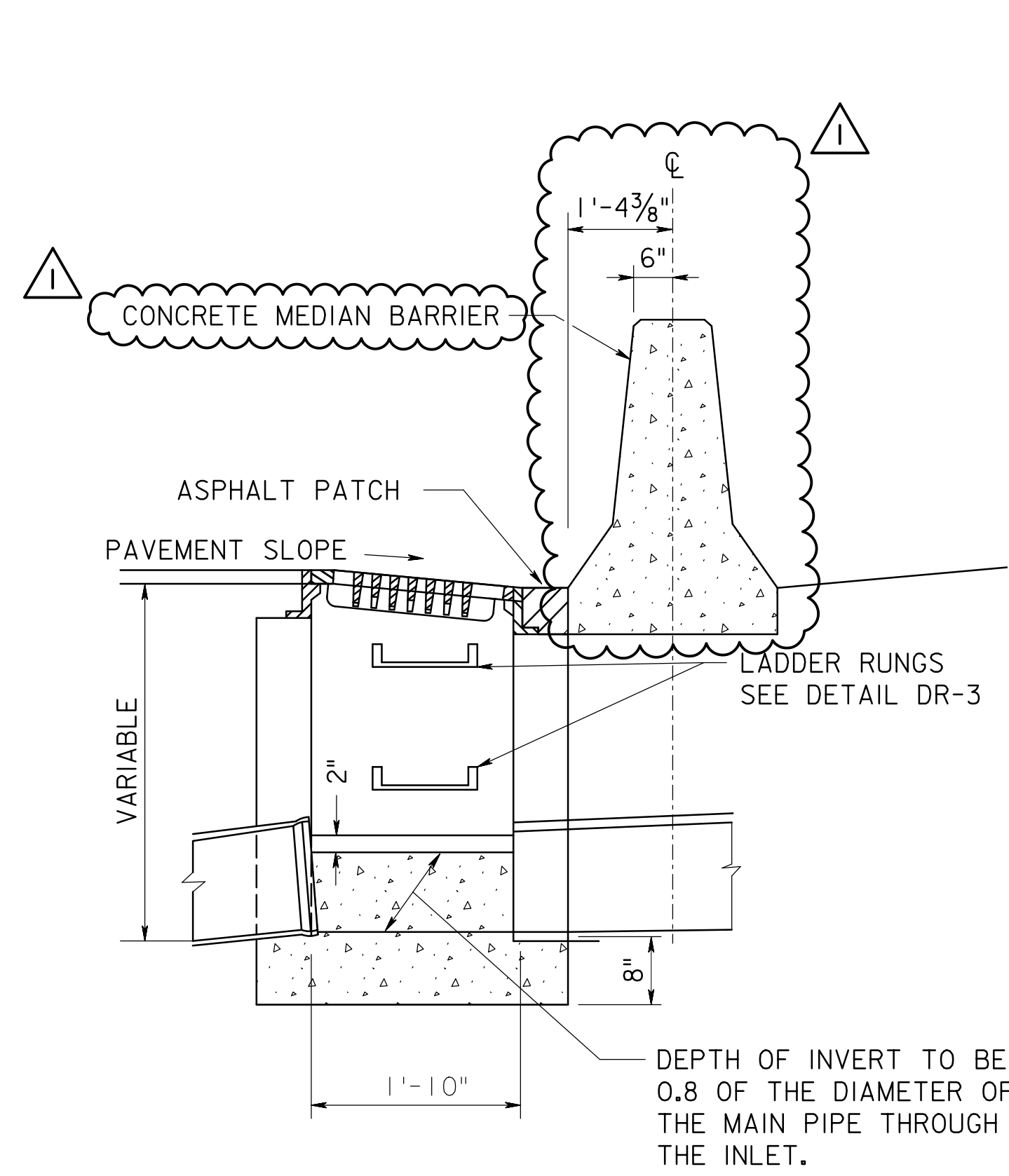
CAST FRAME AND GRATING DETAILS - 2

OFFICE OF THE CHIEF ENGINEER
 NEW JERSEY TURNPIKE AUTHORITY
 WOODBRIDGE, NEW JERSEY

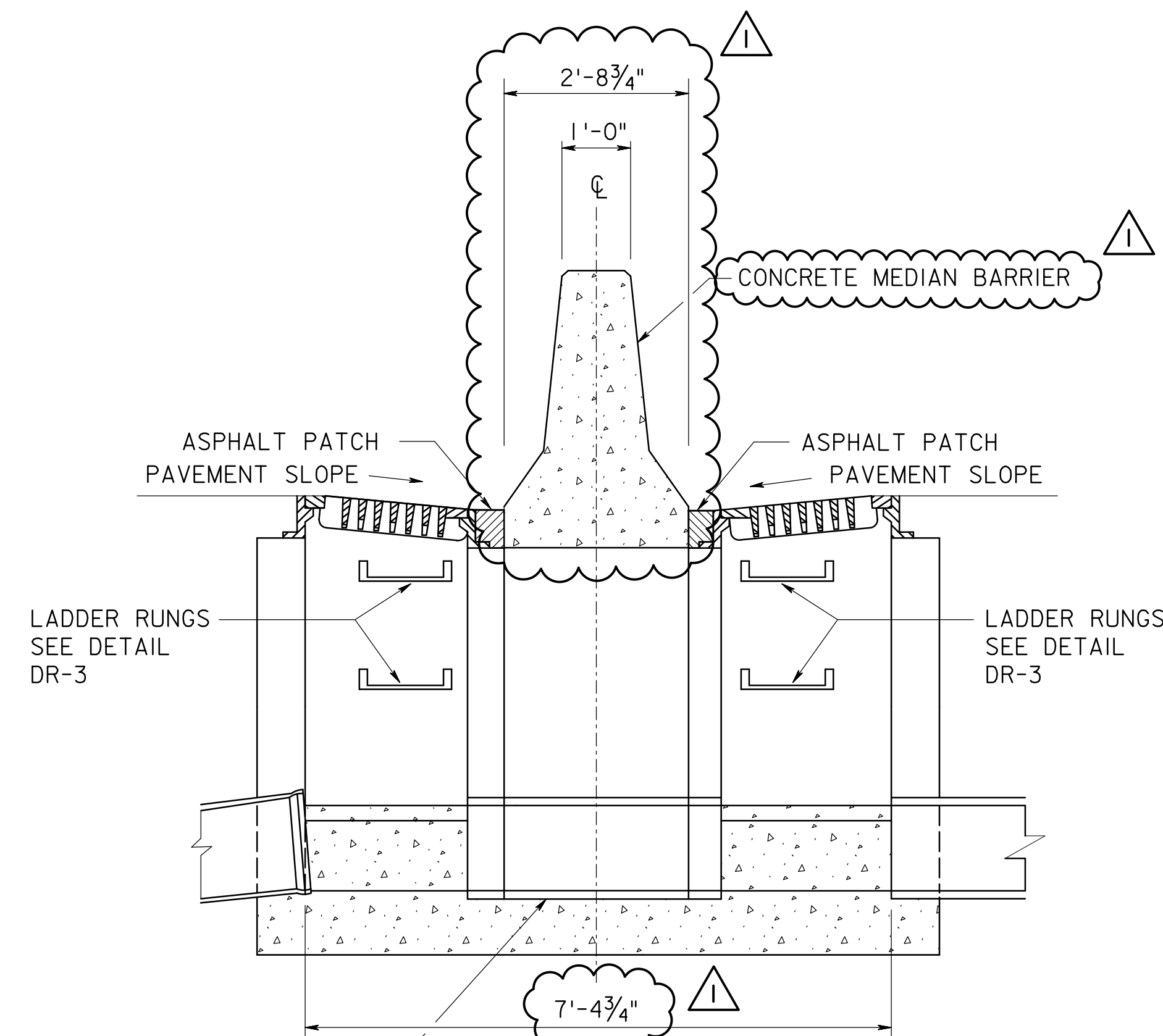
STANDARD DRAWING

DR-2A

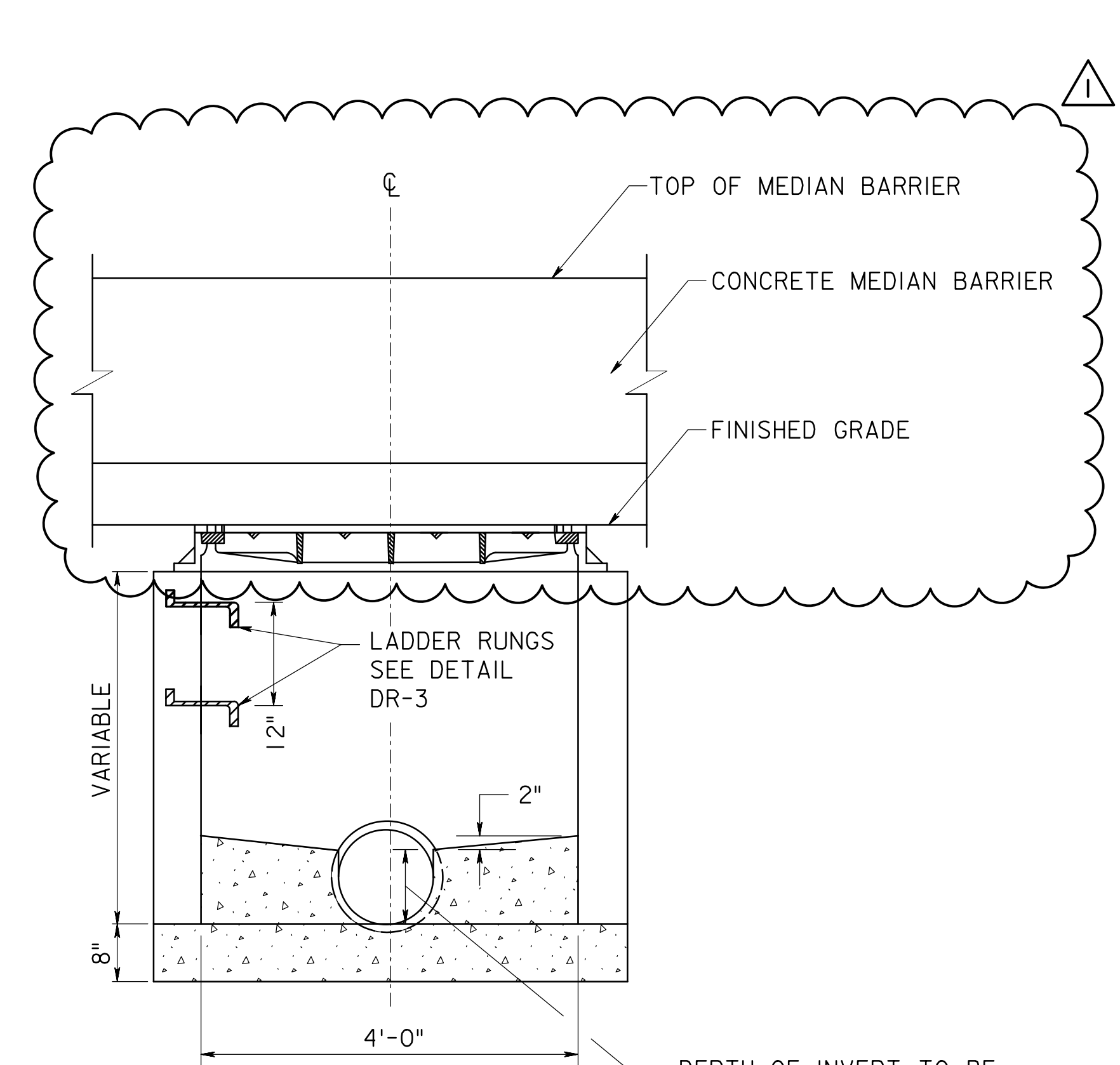
| | | |
|------|------------------|-------|
| 0 | ORIGINAL DRAWING | 03/26 |
| REV. | DESCRIPTION | DATE |



SECTION A-A



SECTION B-B

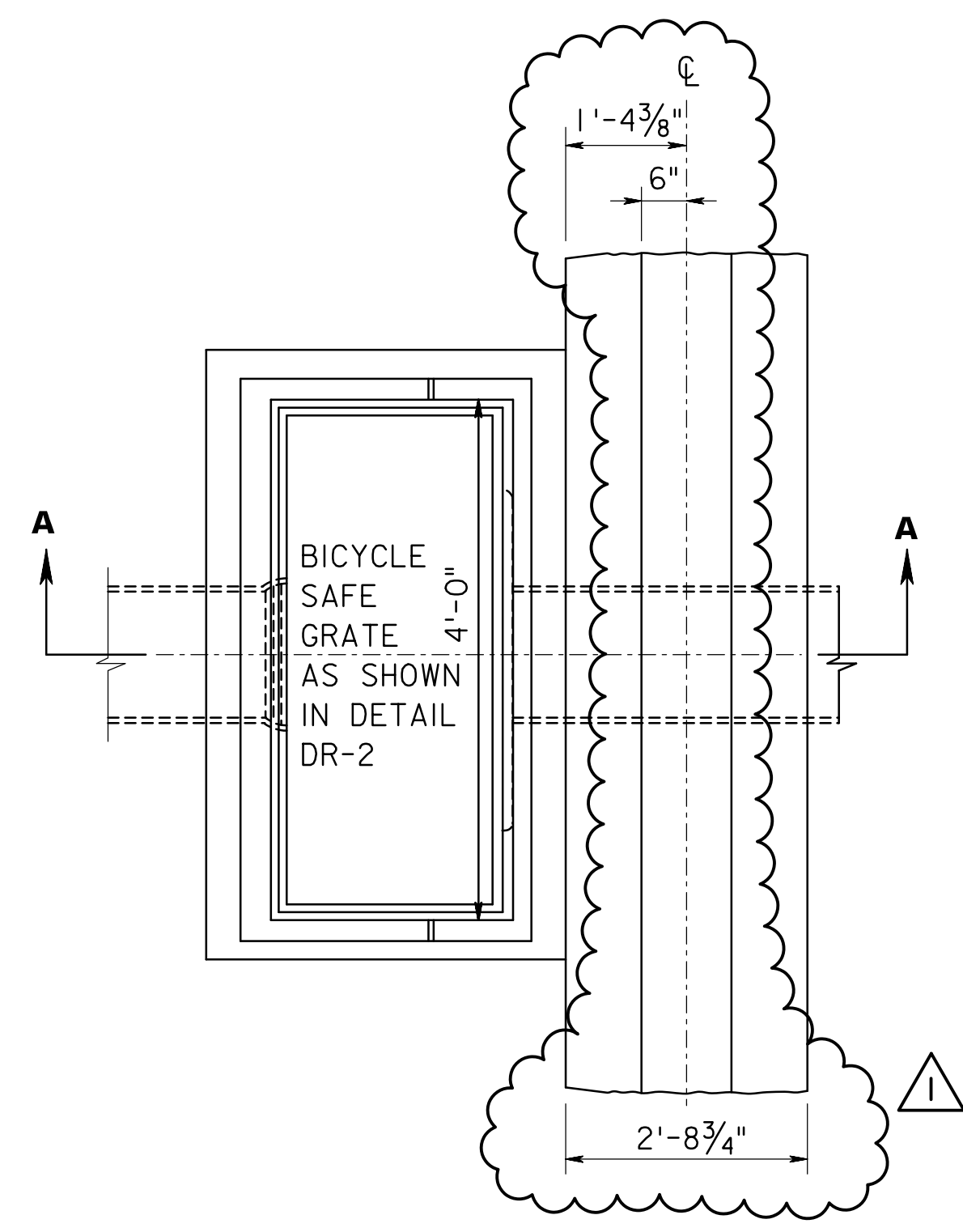
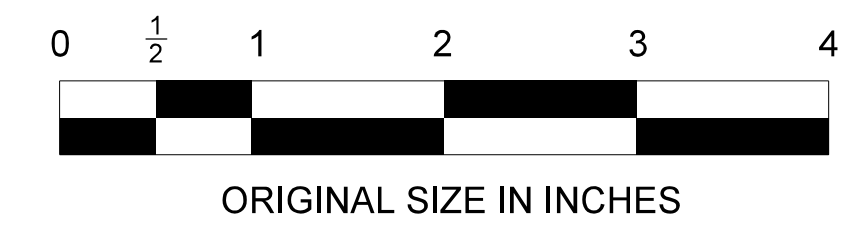


SECTION C-C

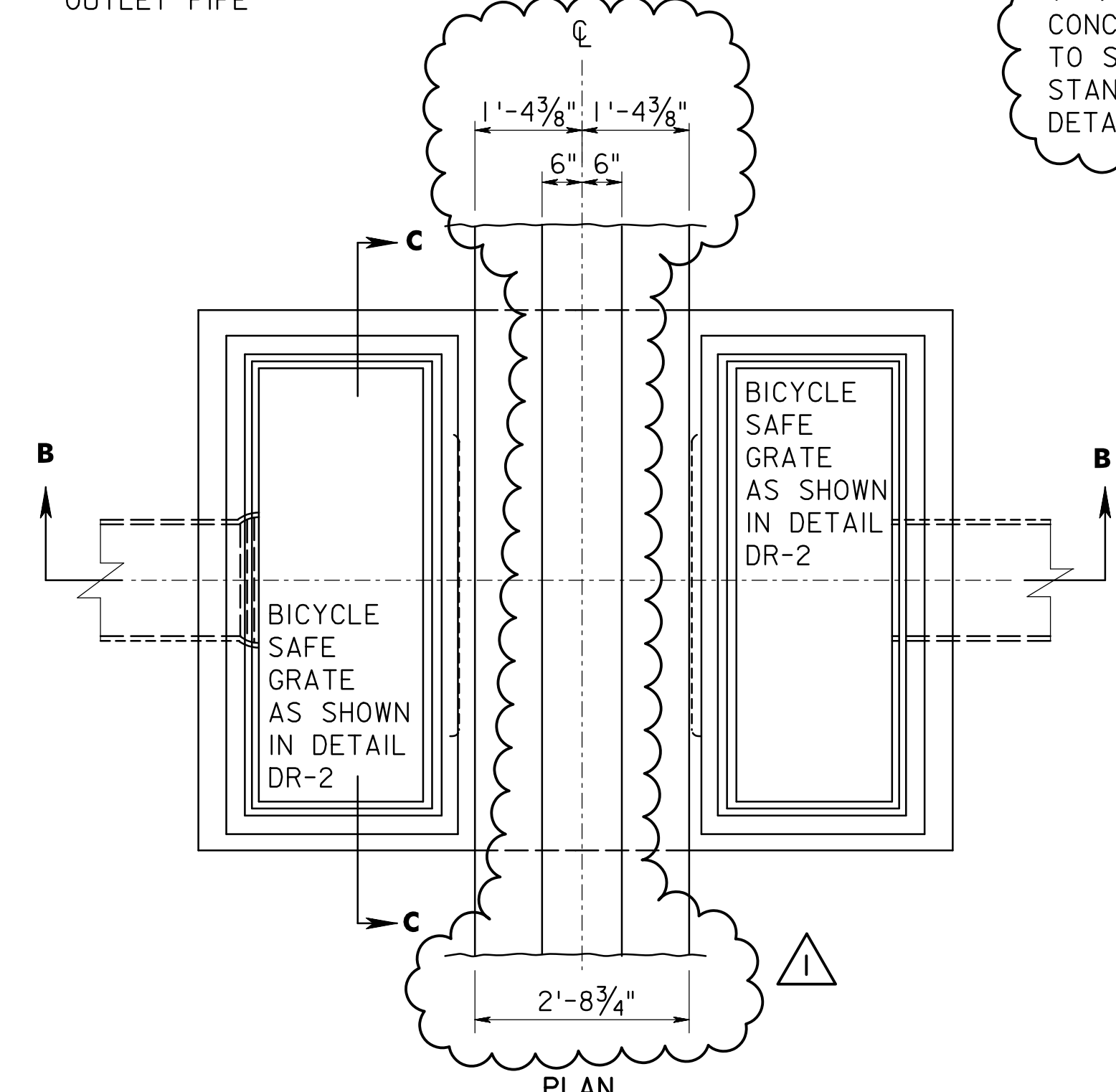
PIPE BETWEEN STRUCTURES SHALL BE SAME SIZE AS OUTLET PIPE

NOTES:
 USE FRAME FOR INLET, TYPE G1.
 CONCRETE MEDIAN BARRIER SHALL CONFORM TO SPECIFICATION SECTION 508. REFER TO STANDARD DRAWING MB-1 FOR ADDITIONAL DETAILS AND INFORMATION.

THIS DRAWING FOR REFERENCE ONLY
 THIS DRAWING MAY ONLY BE USED FOR REPAIR OF EXISTING TYPE D-4 AND TYPE D-5 INLETS. NEW INSTALLATION OR COMPLETE REPLACEMENT SHALL BE PROHIBITED.



INLET TYPE D-4



INLET TYPE D-5

| App. | No. | DATE | REVISION |
|------|-----|-------|--------------------------------------|
| | 1 | 03/26 | UPDATED BARRIER DIMENSIONS AND NOTES |
| | 0 | 04/09 | ORIGINAL DRAWING |

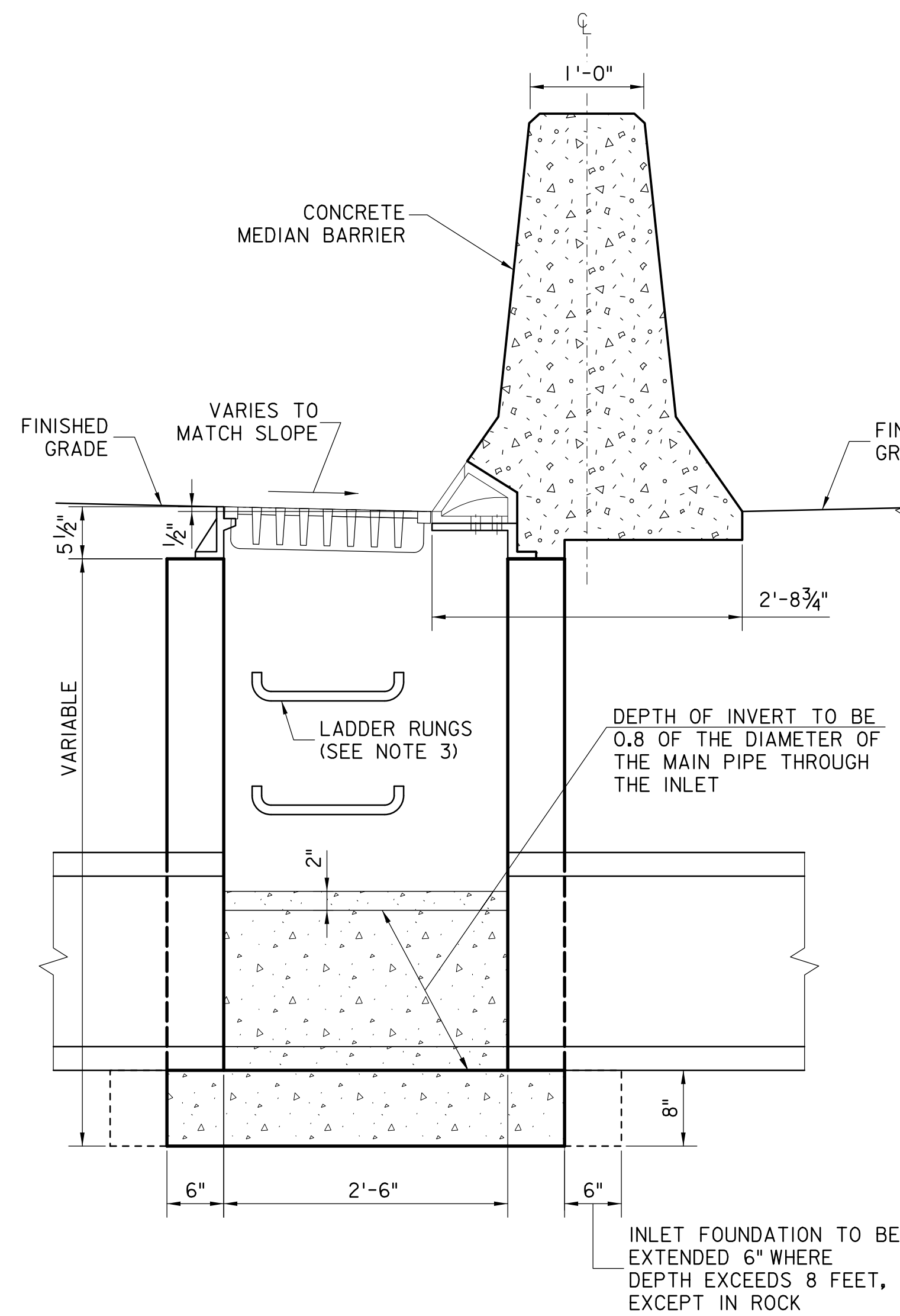
NEW JERSEY TURNPIKE AUTHORITY

BARRIER CURB INLET DETAILS

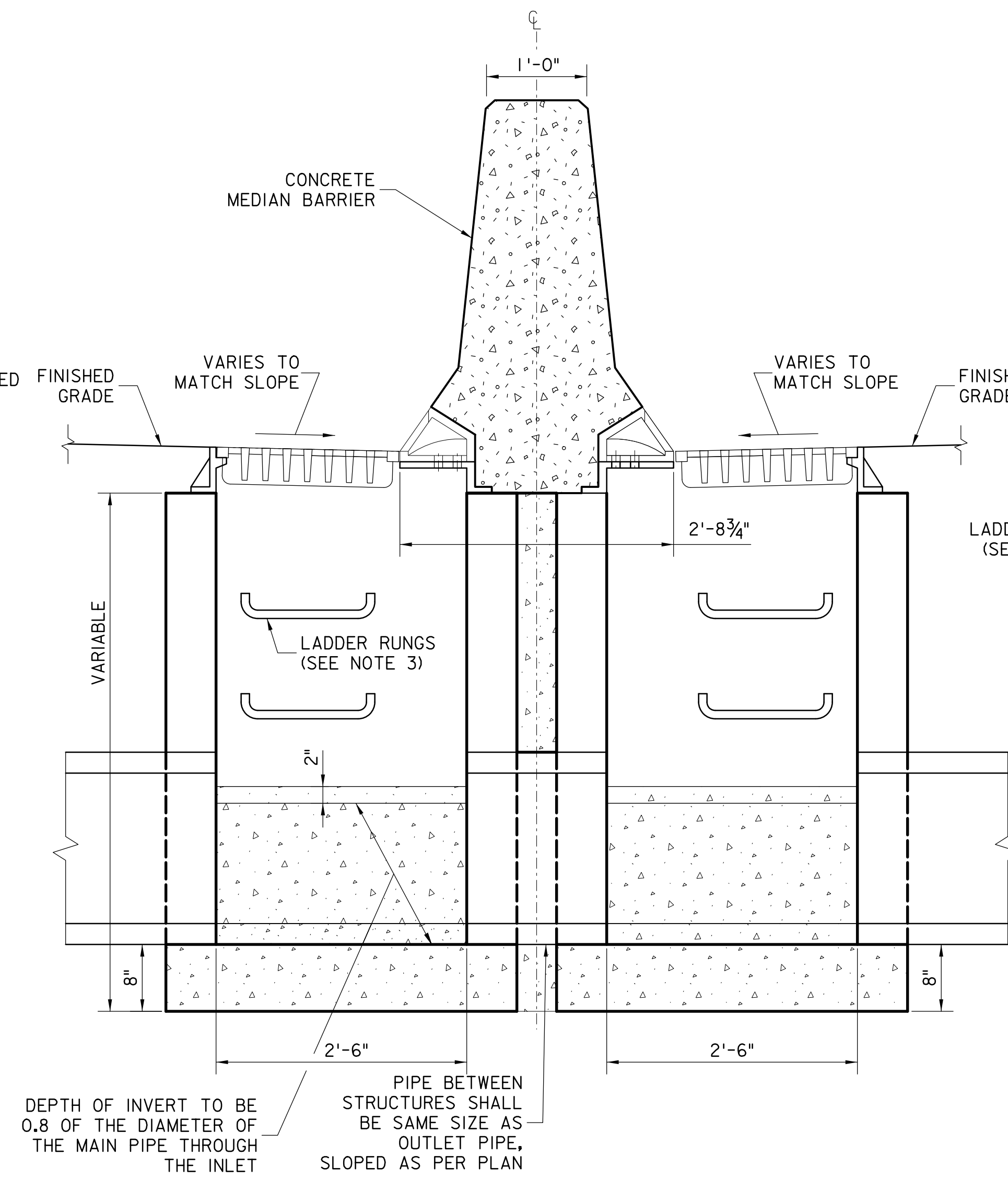
OFFICE OF THE CHIEF ENGINEER

2009 STANDARD DRAWING

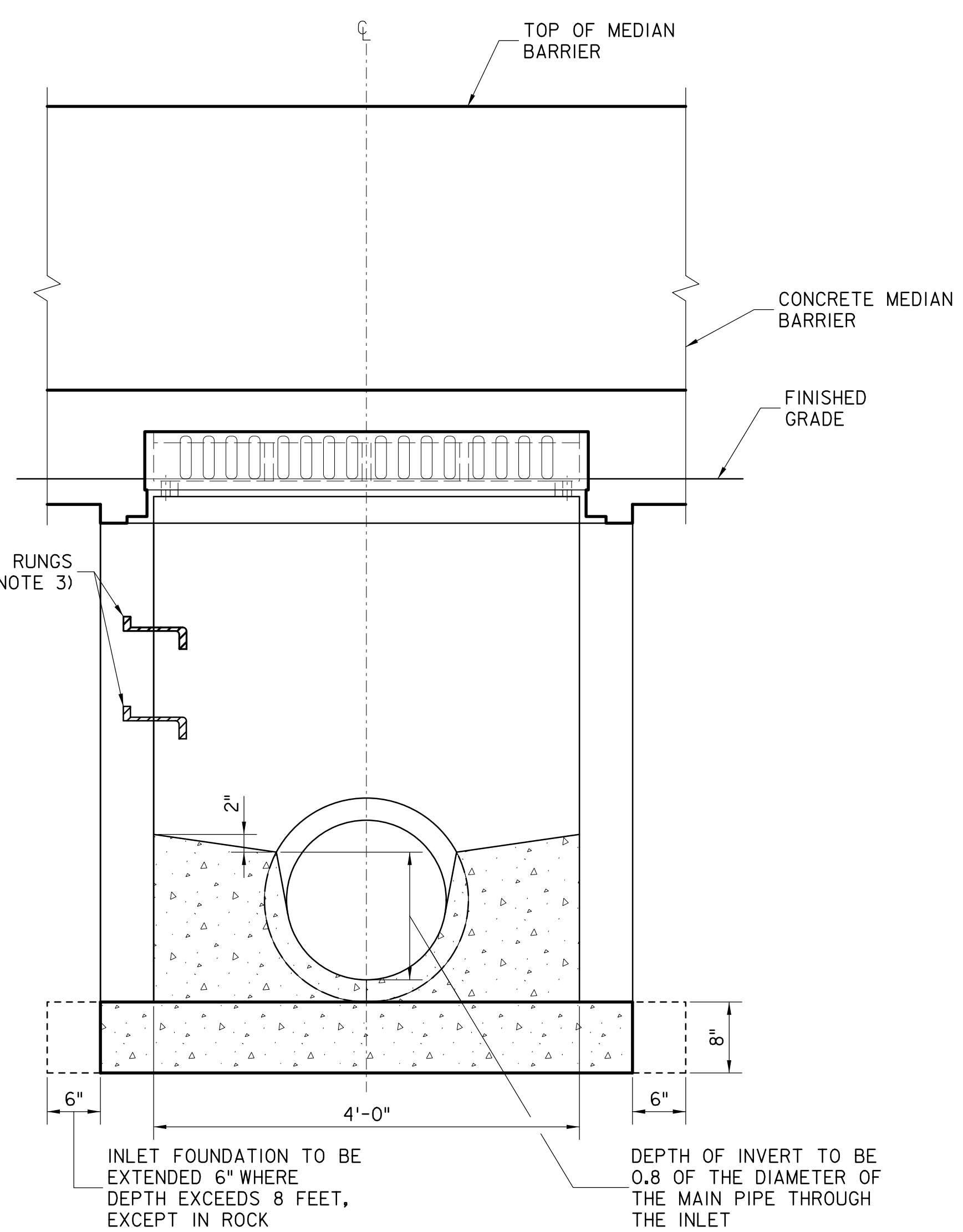
DR-7



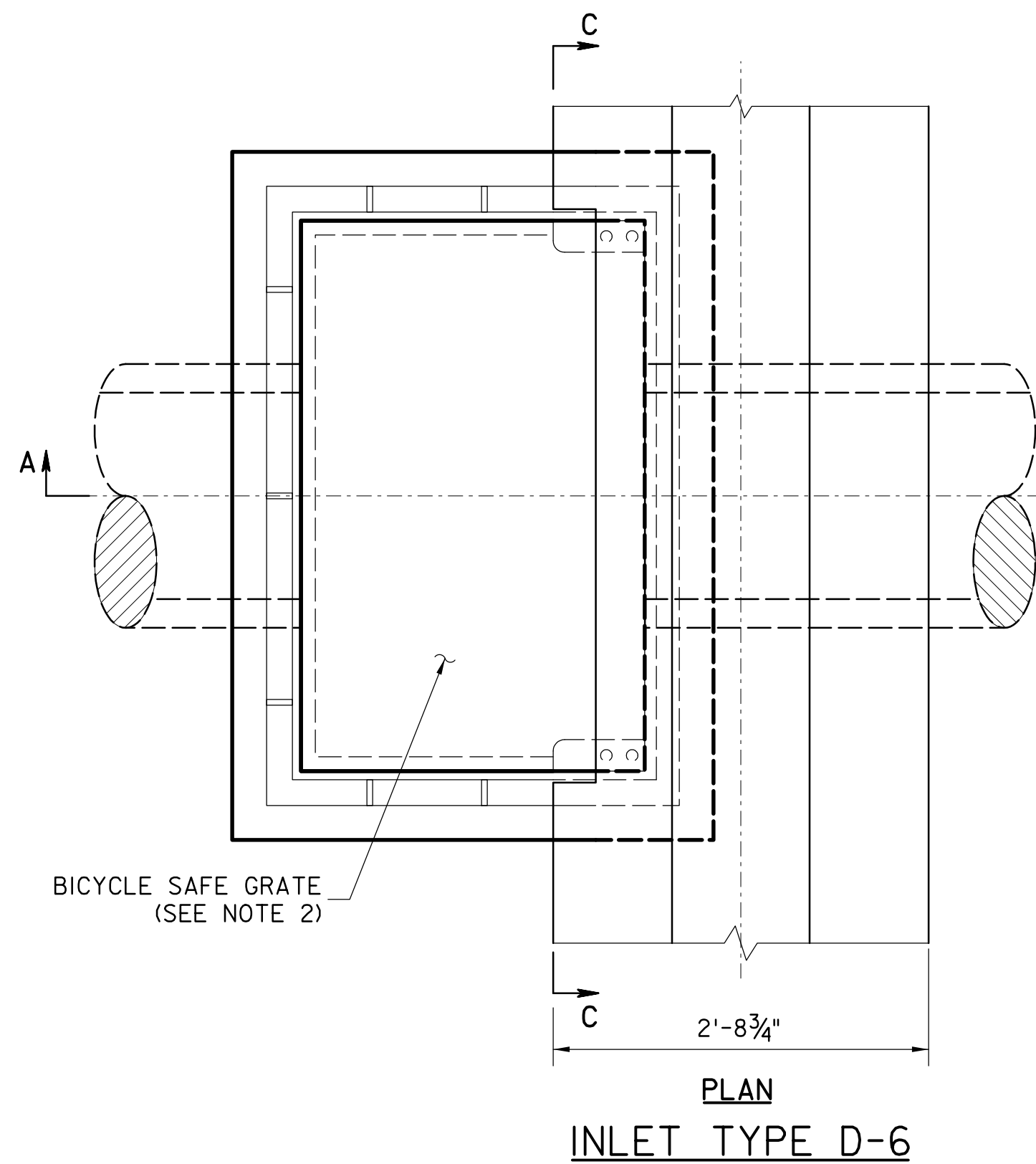
SECTION A-A



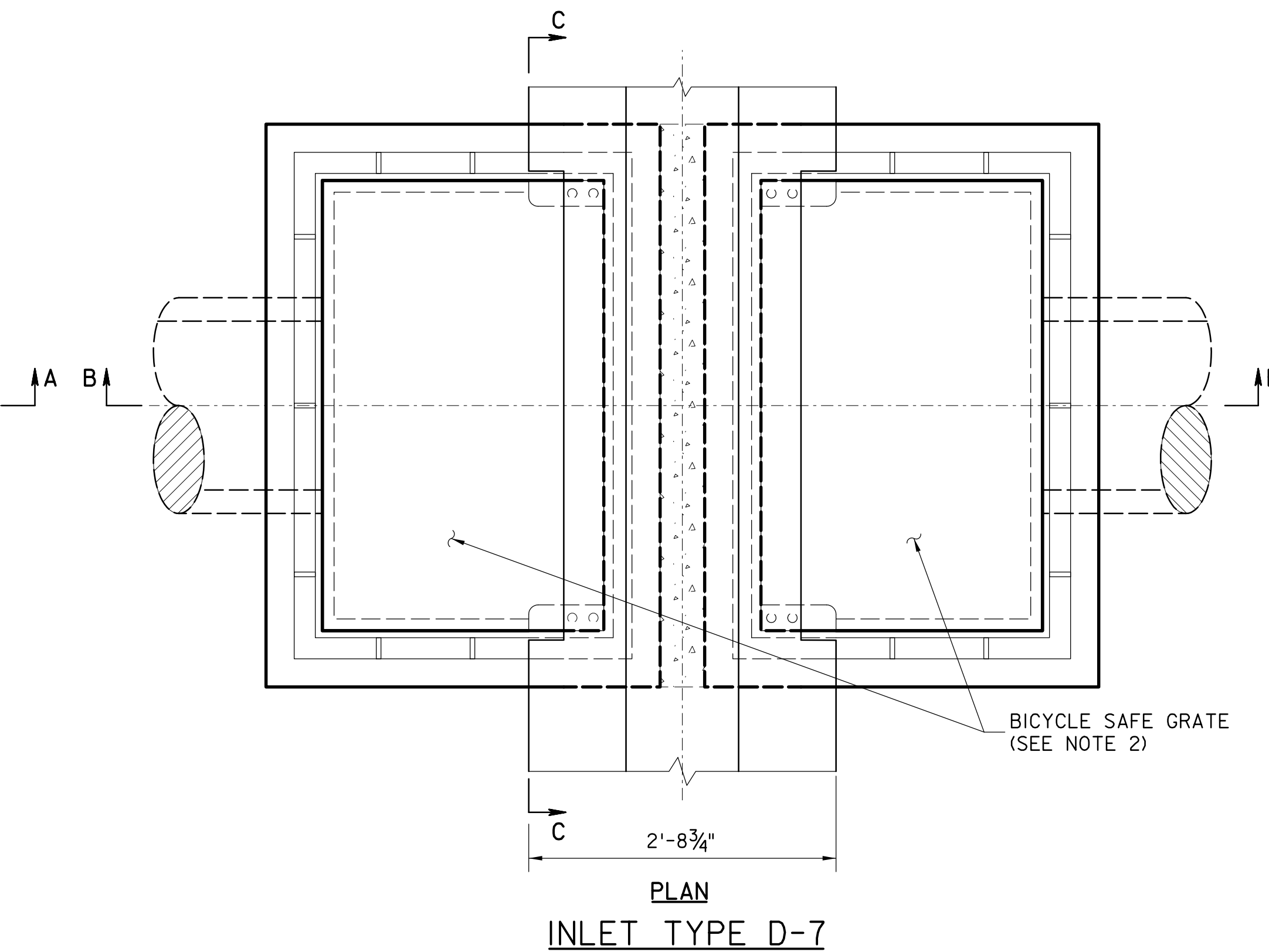
SECTION B-B



SECTION C-C



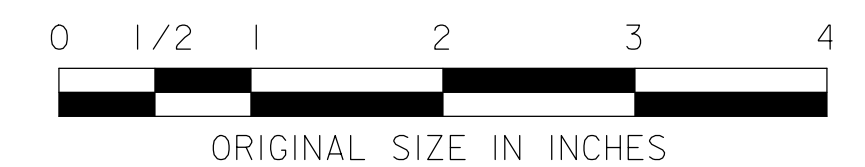
PLAN
INLET TYPE D-6



PLAN
INLET TYPE D-7

NOTES:

1. WORK THIS DRAWING WITH STANDARD DRAWING DR-2A.
2. FOR BICYCLE SAFE GRATE DETAILS, REFER TO STANDARD DRAWING DR-2.
3. FOR LADDER RUNG DETAILS, REFER TO STANDARD DRAWING DR-3.
4. SEE STANDARD DRAWING DR-1 FOR ADDITIONAL INLET NOTES AND DETAILS.



NEW JERSEY TURNPIKE AUTHORITY
NEW JERSEY TURNPIKE
GARDEN STATE PARKWAY
 STANDARD DRAWINGS

BARRIER CURB INLET DETAILS - 2

OFFICE OF THE CHIEF ENGINEER
 NEW JERSEY TURNPIKE AUTHORITY
 WOODBRIDGE, NEW JERSEY

STANDARD DRAWING

| REV. | DESCRIPTION | DATE |
|------|------------------|-------|
| 0 | ORIGINAL DRAWING | 03/26 |

DR-7A