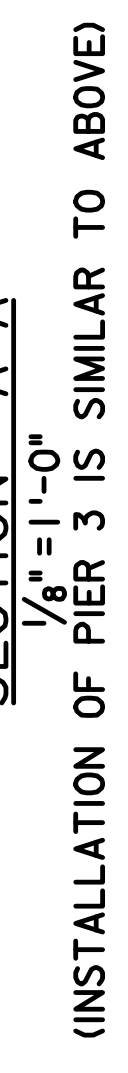
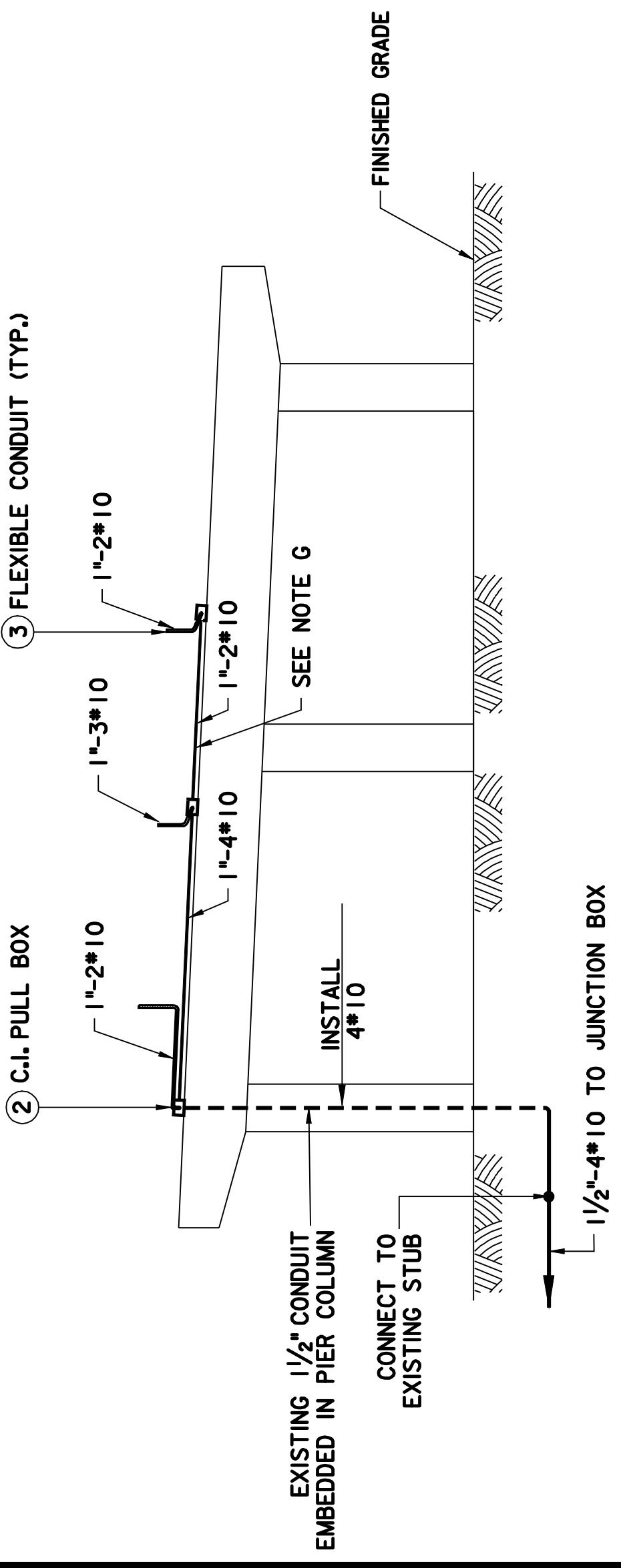
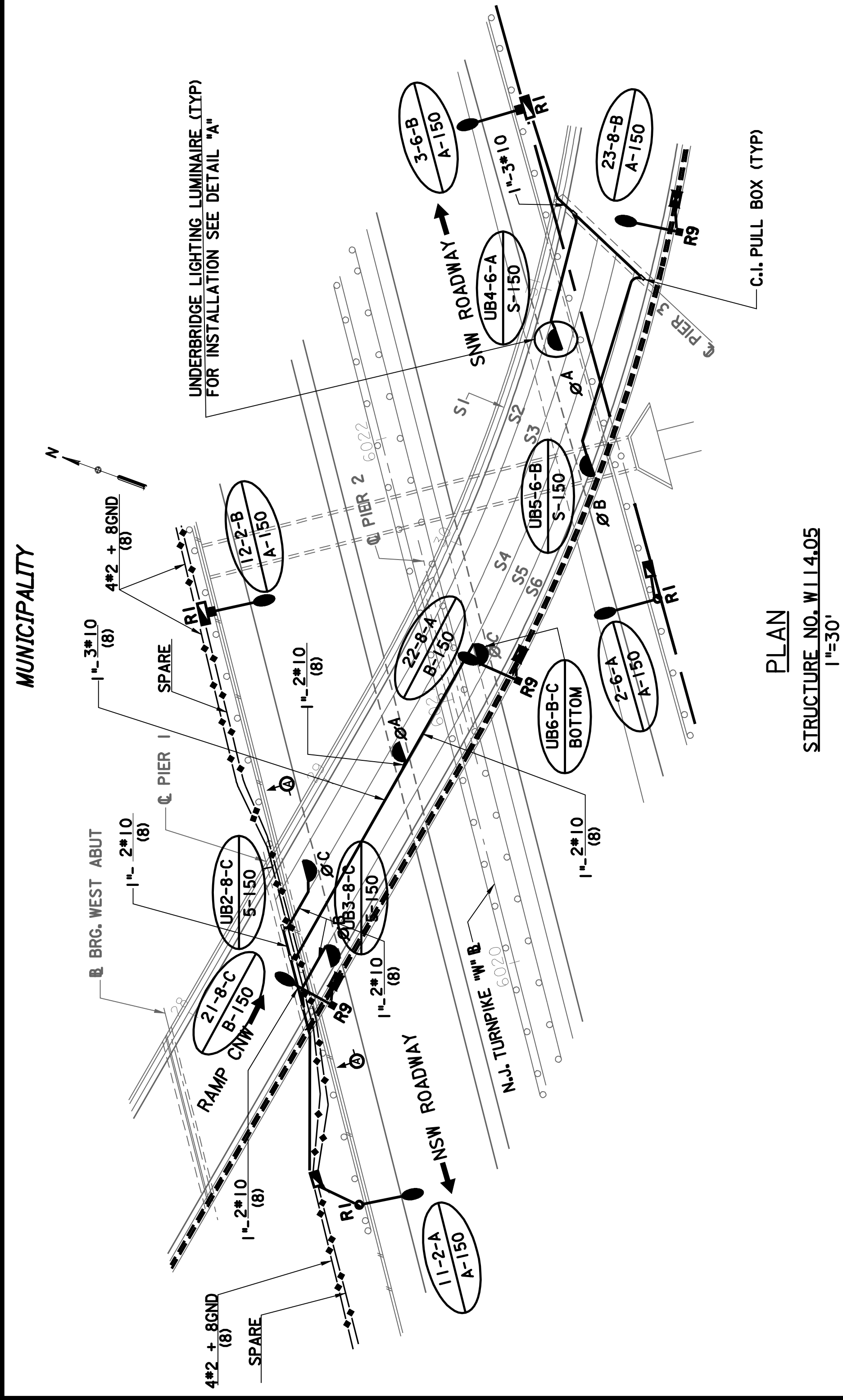


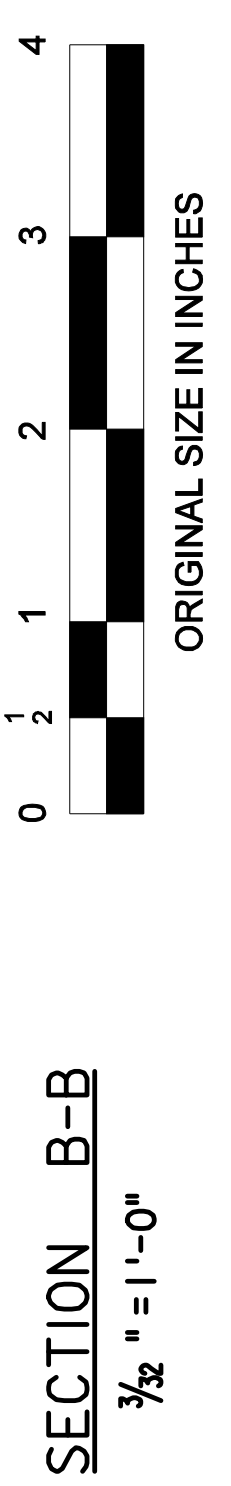
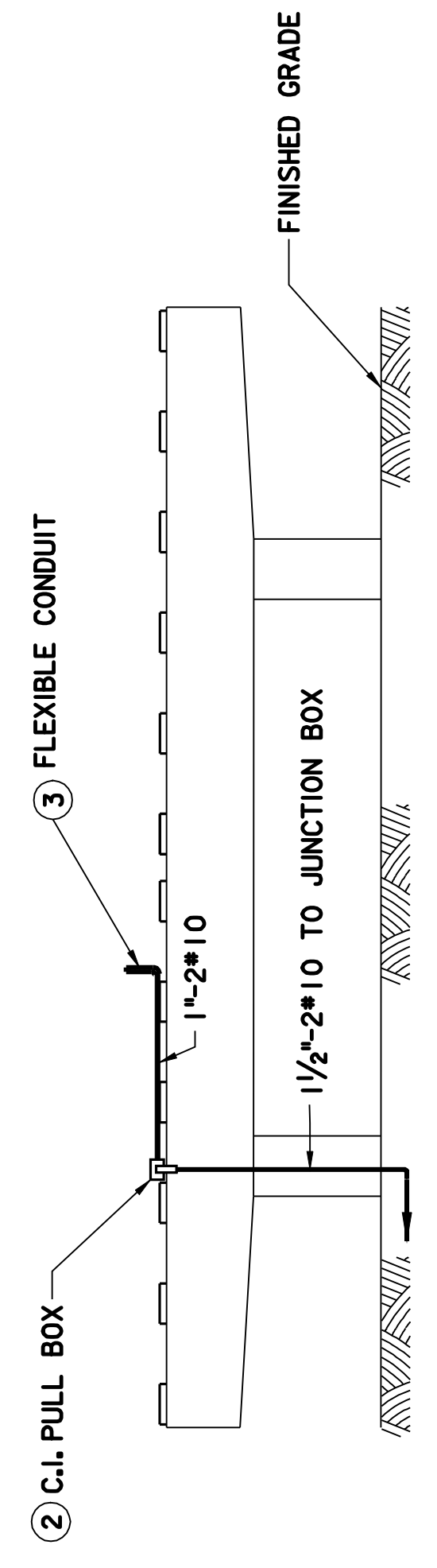
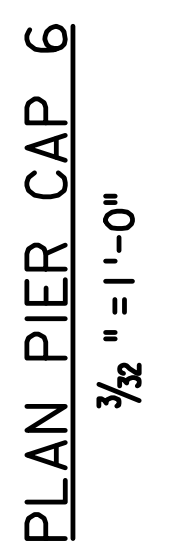
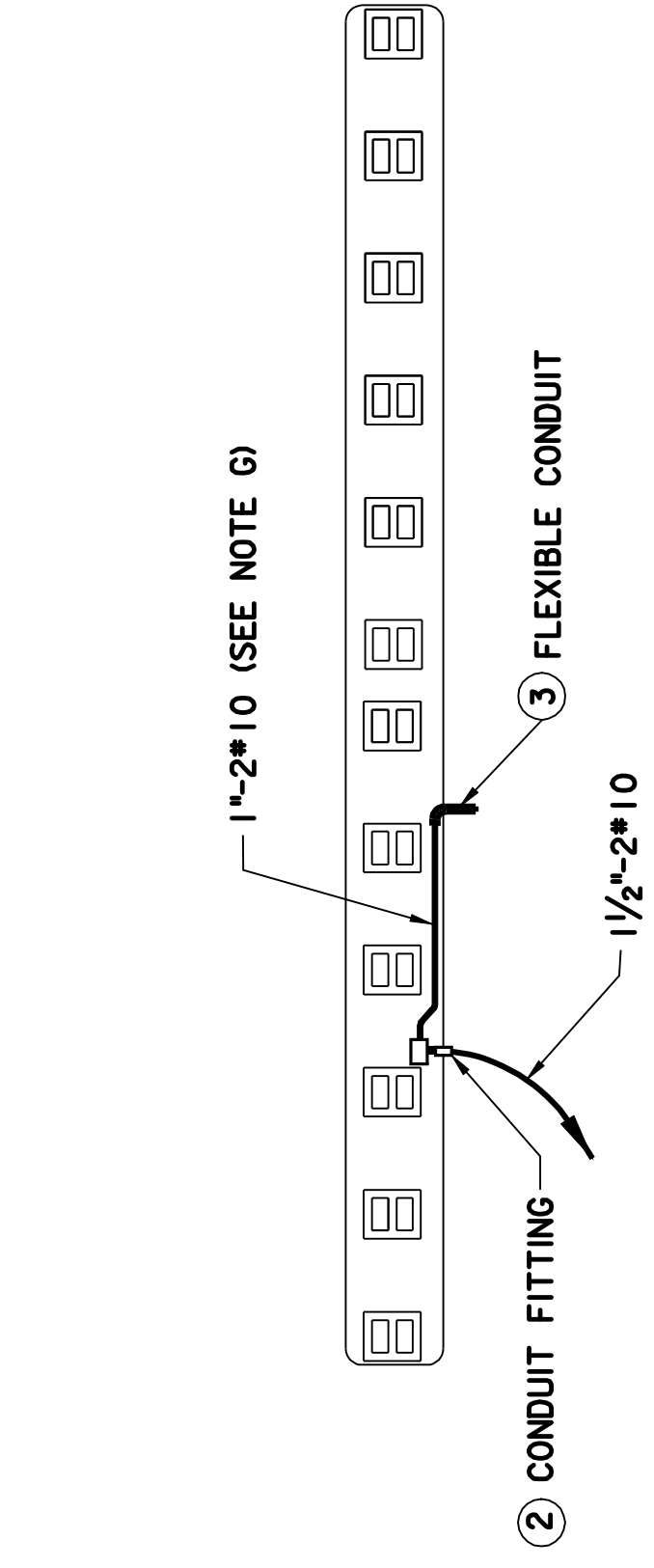
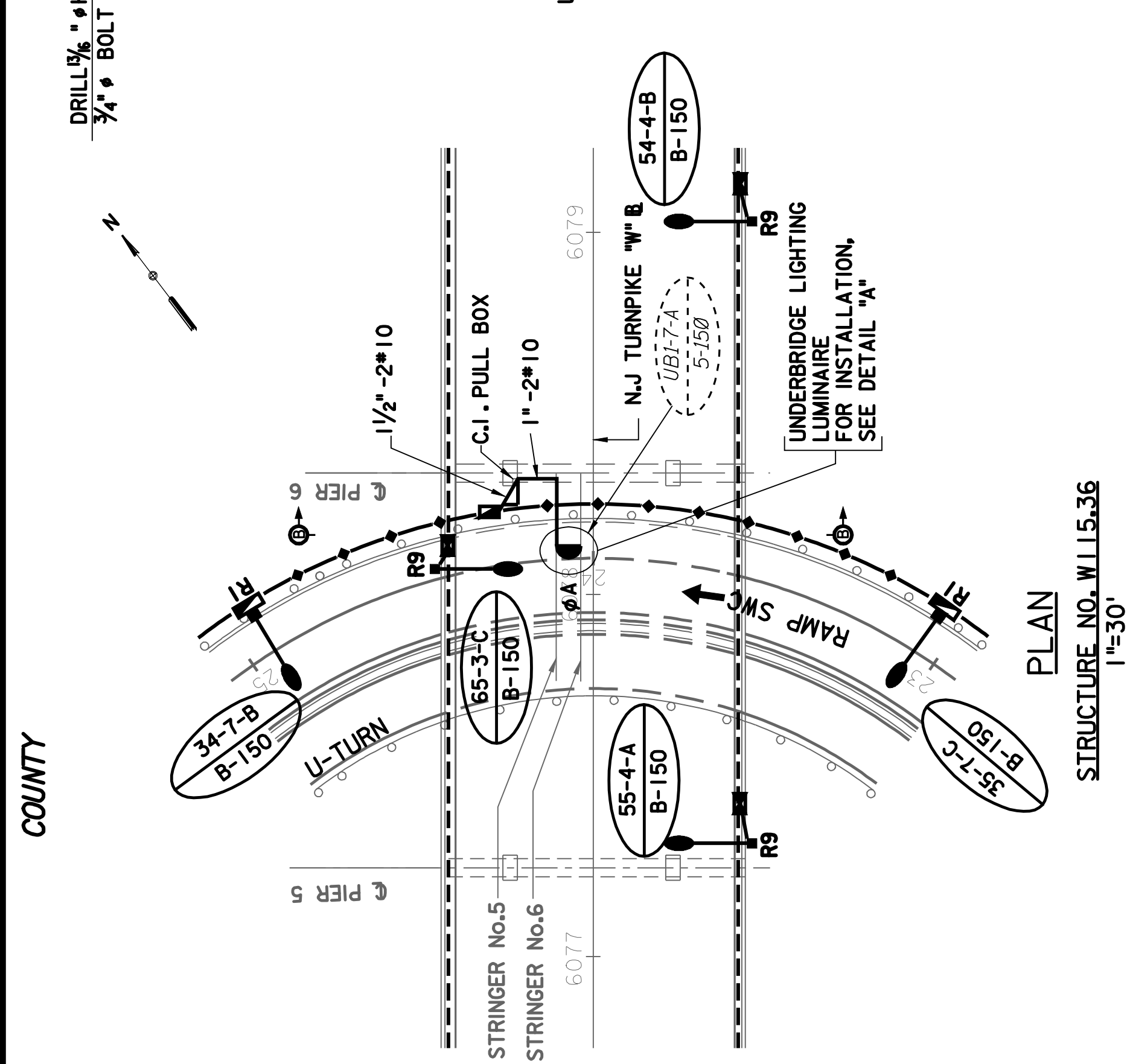
No.	DATE	SAMPLE PLAN REVISION
0	5-08	ORIGINAL SHEET

	BY	DATE
MADE	XXX	XX-XX-XX
TRACED	XXX	XX-XX-XX
CHECKED	XXX	XX-XX-XX
SUPERVISED	X.XXXX	

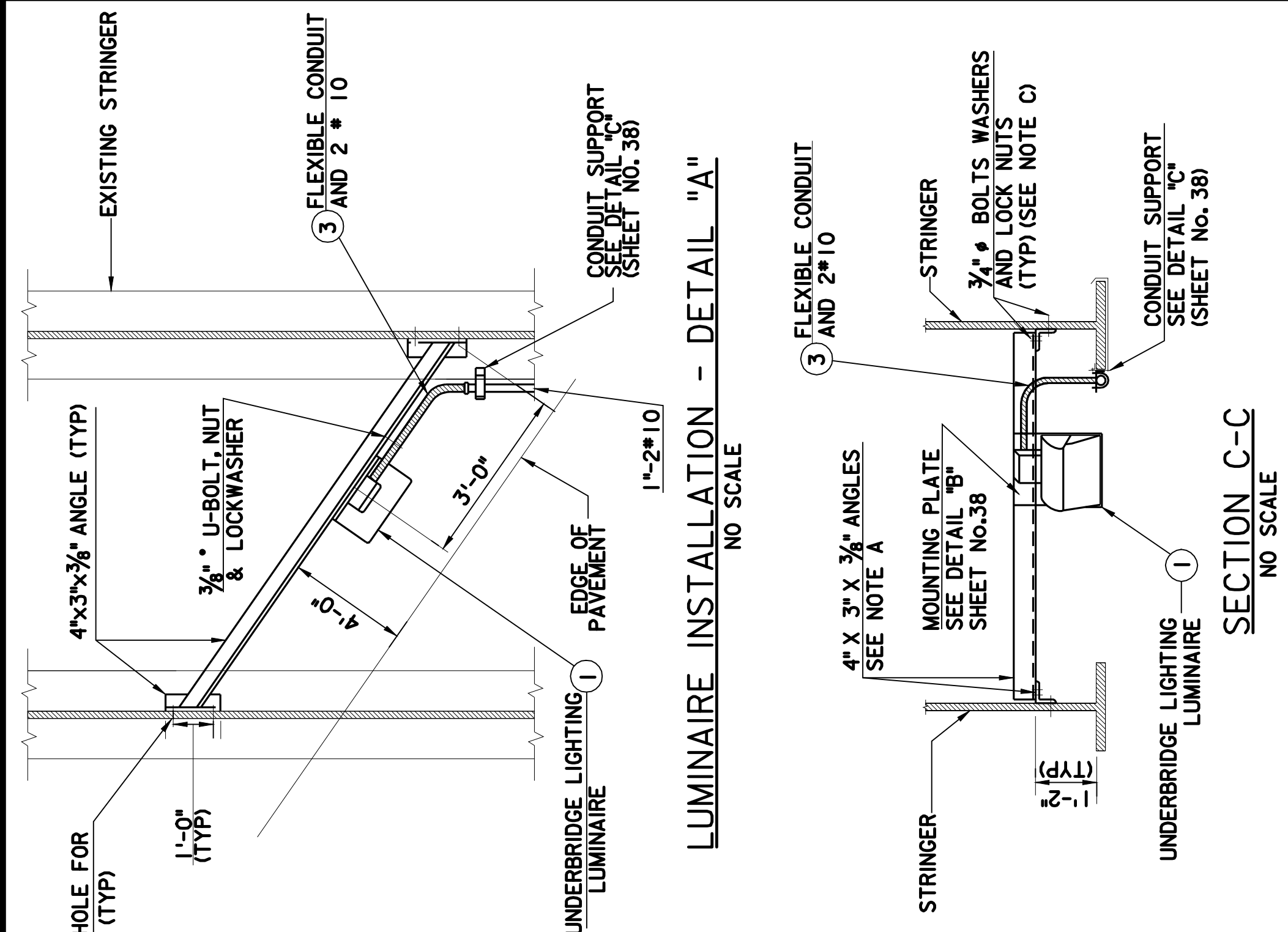
AND/OR AS DIRECTED BY THE ENGINEER.



- LIST OF MATERIAL
- ① UNDERBRIDGE LIGHTING LUMINAIRE : INTEGRAL BALLAST, 250 WATT, MERCURY VAPOR TYPE (SEE SPECIFICATIONS)
 - ② CAST IRON PULL BOX X 8" X 8" X 6" H.D., GALVANIZED, EQUIPMENT WITH GASKET, MOUNTING LUGS, BOSSES (AS REQUIRED) AND SHALL BE EQUAL TO OZ CAT. NO. YS080806.
 - ③ FLEXIBLE CONDUIT : 1" SIZE AND MINIMUM OF 12 " LONG. (SEE SPECIFICATIONS).
 - ④ CONDUIT FITTING : F- EQUAL TO CROUSE - HINDS CO'S TYPE LB CONDUIT WITH GASKET AND FERALOY COVERS, WHERE SHOWN AND/OR AS DIRECTED BY THE ENGINEER.



No.	DATE	REVISION	



- NOTES
- A. STRUCTURAL STEEL MEMBERS SHALL CONFORM TO ASTM DESIGNATION A588.
 - B. ALL STRUCTURAL STEEL PARTS OF THE CONDUIT SUPPORT ASSEMBLY SHALL CONFORM TO ASTM DESIGNATION A588. ALL BOLTS, NUTS AND WASHERS SHALL BE OF GALVANIZED CARBON STEEL CONFORMING TO ASTM DESIGNATIONS A307 AND A153.
 - C. ALL BOLTS, NUTS AND WASHERS SHALL BE OF HIGH STRENGTH STEEL, CONFORMING TO ASTM DESIGNATION A325, TYPE3.
 - D. SHOWN DETAIL IS BASED ON HOLOPHONE LUMINAIRE MODIFICATIONS MAY BE REQUIRED IF OTHER APPROVED LUMINAIRE IS USED.
 - E. UNDERBRIDGE LIGHTING FEEDER SHALL BE FUSED IN CONCRETE JUNCTION BOX OR JUNCTION BOX FOUNDATION, IN ACCORDANCE WITH THE WIRING DIAGRAM SHOWN ON STANDARD DRAWING E-5.
 - F. PROVIDE WEEP HOLES IN LOW POINTS OF ALL CONDUIT RUNS, CONDUIT FITTINGS, OR CAST IRON PULL BOXES.
 - G. CONDUIT TO BE FASTENED TO TOP OF PIER WITH CLAMP AND CLAMPBACK BY MEANS OF $\frac{3}{8}$ " ϕ - 2 UNIT EXPANSION ANCHOR BOLTS, SPACED 5'-0" MAX. CONDUIT TO BE PLACED, AS DIRECTED BY THE ENGINEER.

NEW JERSEY TURNPIKE AUTHORITY	CONTRACT NO.
ROADWAY NAME	ROADWAY LIGHTING
PROJECT DESCRIPTION	UNDERBRIDGE LIGHTING DETAILS -1-
NAME OF CONSULTANT	
ADDRESS	
CERTIFICATE OF AUTHORIZATION NO. XXXXXXXXXX	
SCALE: AS SHOWN	
DATE: MAY 2008	
JOHN DOE	
NEW JERSEY PROFESSIONAL ENGINEER LICENSE NO. XXXXXXXXXX	