

New Jersey Turnpike Authority

P.O. Box 5042, Woodbridge, NJ 07095



March 12, 2026

Document Change Announcement

Standard Drawings

Concrete Collars for Flared End Sections

DCA2026SD-03

Subject: Revisions to

Drawing DR-4 Alterations Of Manholes, Inlets And Miscellaneous Details

Drawing DR-4A Flared End Section Concrete Collar

Description of Change:

This DCA adds a concrete collar to be installed at existing and proposed flared end sections.

Notice to New Jersey Turnpike Authority Staff and Design Consultants

Effective immediately, all contracts currently in the design phase shall incorporate the revisions herein. For advertised contracts awaiting the opening of bids this revision shall be incorporated via addendum. Contact your New Jersey Turnpike Authority Project Manager for instruction.

The revisions may be accessed on the Authority's webpage: <https://www.njta.gov/business-hub/professional-services/document-change-announcements/>

Recommended By:

(signature on original)

Lamis T. Malak, P.E.
Deputy Chief Engineer - Design

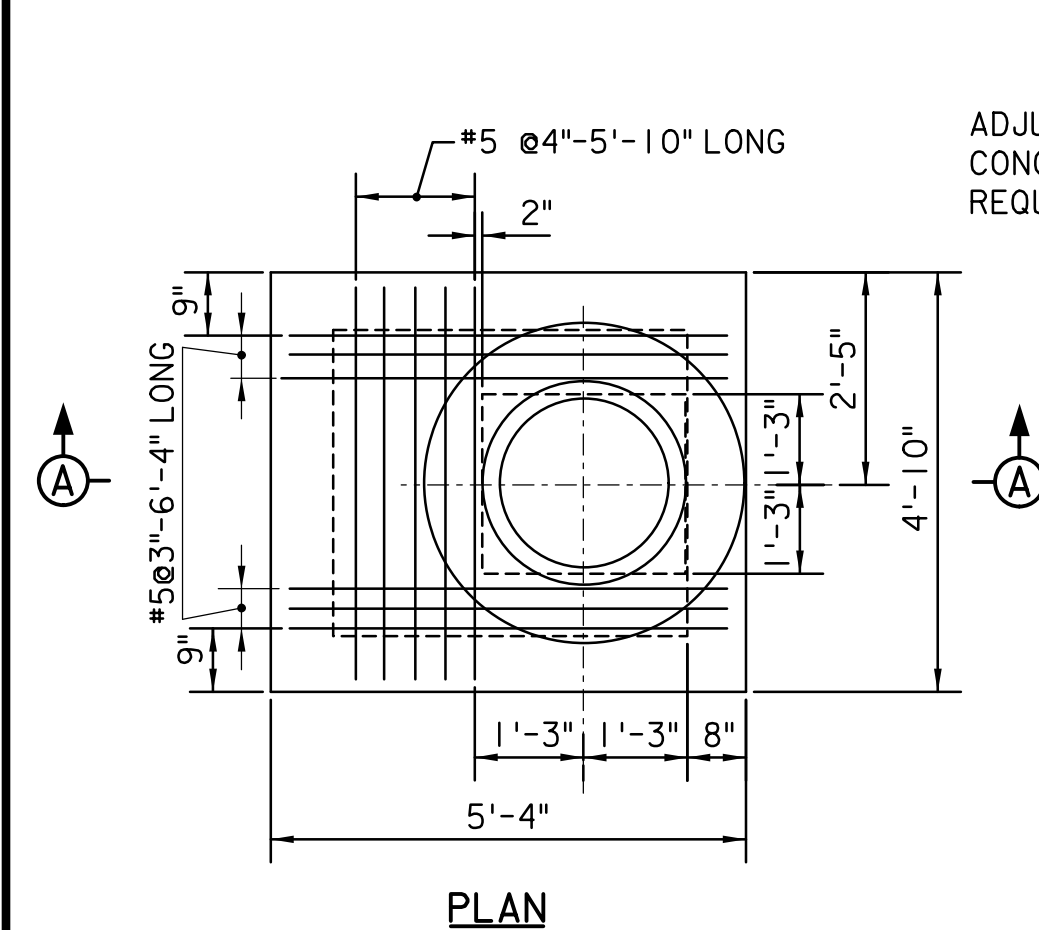
(signature on original)

Robert Higham, P.E.
Deputy Chief Engineer - Construction

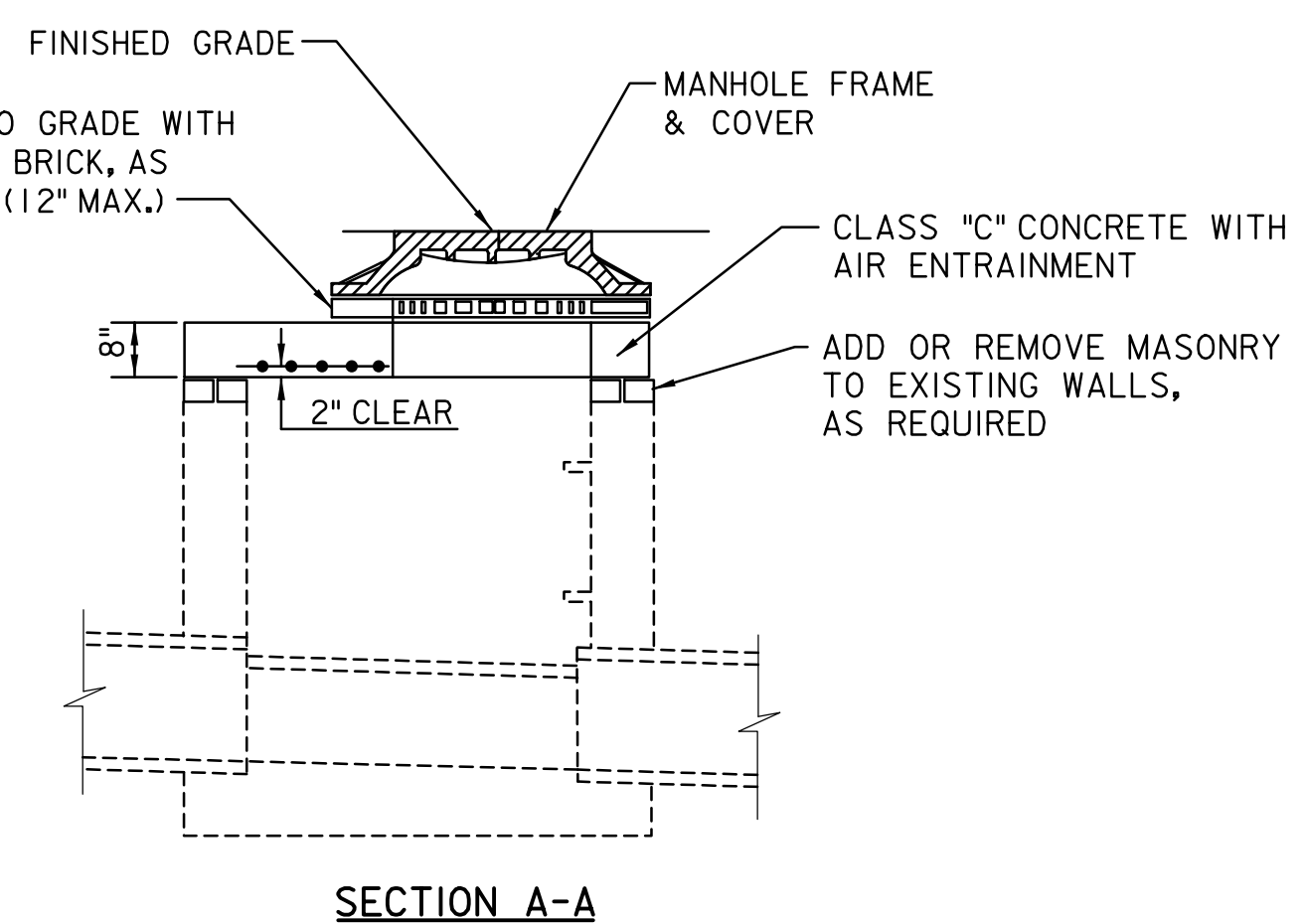
Approved By:

(signature on original)

Daniel L. Hesslein, P.E.
Chief Engineer



ADJUST TO GRADE WITH CONCRETE BRICK, AS REQUIRED (12\"/>

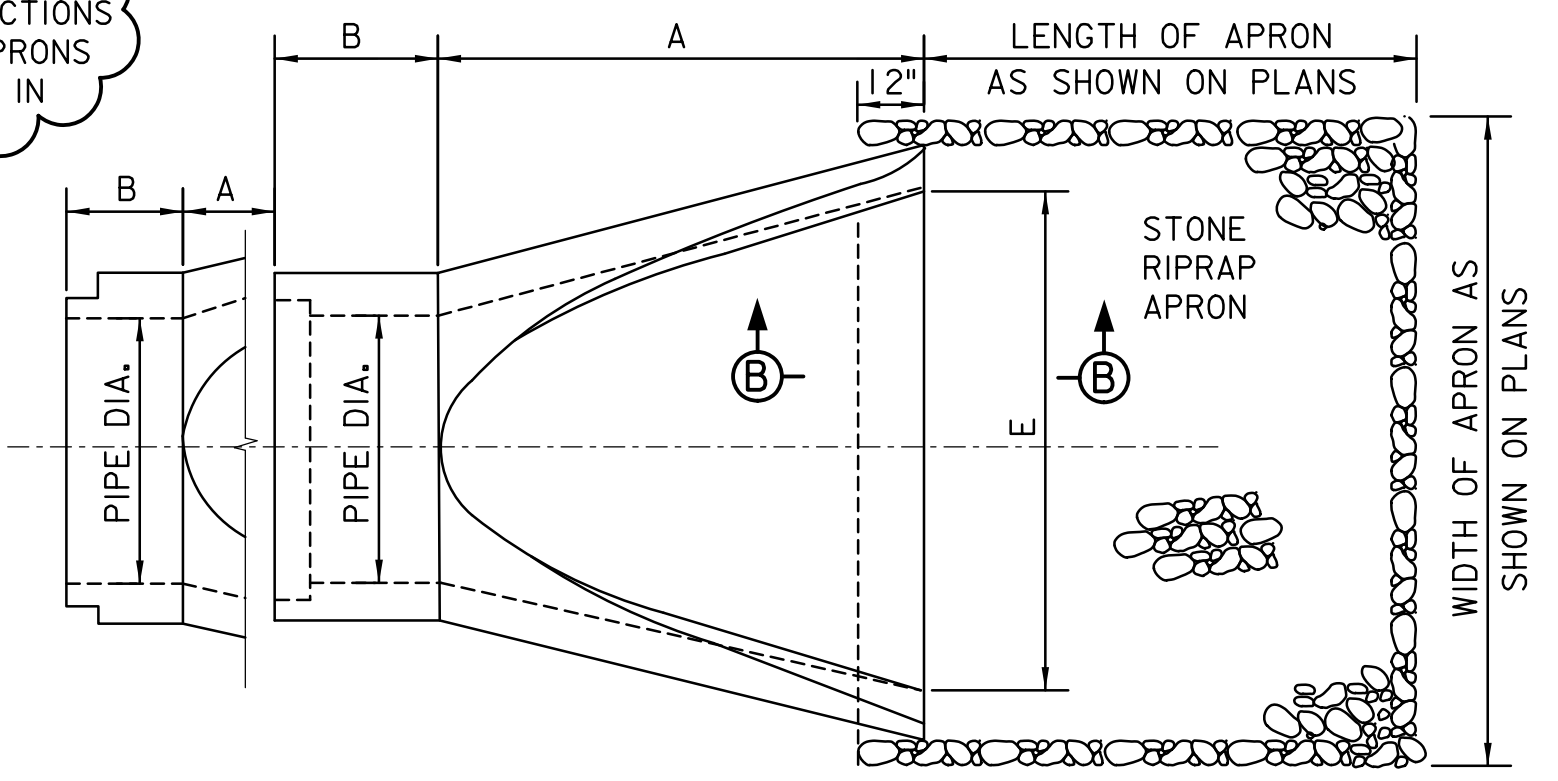


CONVERTING EXISTING INLET TO MANHOLE

CIRCULAR HDPE PIPE END SECTIONS								ARCH HDPE PIPE END SECTIONS									
PIPE DIA.	DIMENSIONS				SLOPE	BODY	PC		SPAN RISE	DIMENSIONS				SLOPE	BODY	PC	
	A (1\"/>																
12"	6"	6"	6"	21"	24"	2 1/2	1	18"x11"	7"	9"	6"	19"	30"	2 1/2	1	1	
15"	7"	8"	6"	26"	30"	2 1/2	1	22"x13"	7"	10"	6"	23"	36"	2 1/2	1	1	
18"	8"	10"	6"	31"	36"	2 1/2	1	25"x16"	8"	12"	6"	28"	42"	2 1/2	1	1	
24"	10"	13"	6"	41"	48"	2 1/2	1	29"x18"	9"	14"	6"	32"	48"	2 1/2	1	1	
30"	12"	16"	8"	51"	60"	2 1/2	2	36"x22"	10"	16"	6"	39"	60"	2 1/2	1	1	
36"	14"	19"	9"	60"	72"	2 1/2	2	43"x27"	12"	18"	8"	46"	75"	2 1/2	1	1	
42"	16"	22"	11"	69"	84"	2 1/2	2	50"x31"	13"	21"	9"	53"	85"	2 1/2	2	1	
48"	18"	27"	12"	78"	90"	2 1/4	2	58"x36"	18"	26"	12"	63"	90"	2 1/2	2	1	
54"	18"	30"	12"	84"	102"	2	2	65"x40"	18"	30"	12"	70"	102"	2 1/4	2	1	
60"	18"	33"	12"	87"	114"	1 3/4	3	72"x44"	18"	33"	12"	77"	114"	2 1/4	3	1	
66"	18"	36"	12"	87"	120"	1 1/2	3	79"x49"	18"	36"	12"	77"	126"	2	3	1	
72"	18"	39"	12"	87"	126"	1 1/2	3	85"x54"	18"	39"	12"	77"	138"	2	3	1	

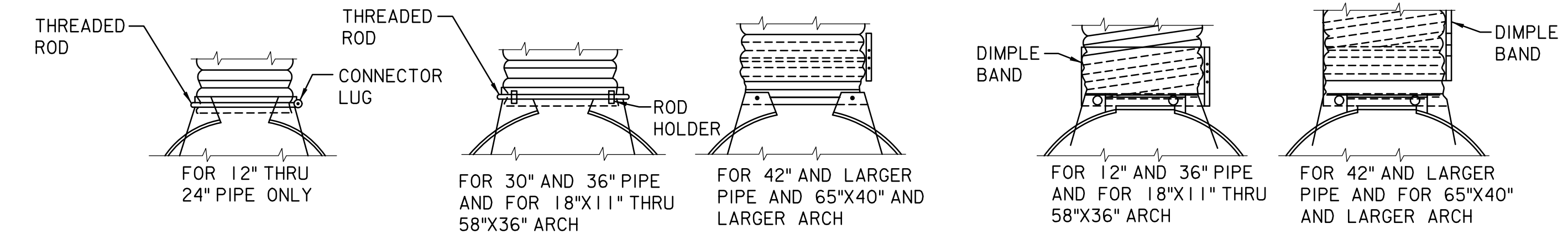
**TABLE OF DIMENSIONS
FLARED END SECTIONS FOR HDPE PIPE**

*DIMENSION H TO BE 2" FOR ALL HDPE END SECTIONS WITH STONE RIPRAP APRONS (MAY BE CUT TO SUIT IN THE FIELD)



DESIGN AND WALL THICKNESS SHALL CONFORM TO REQUIREMENTS FOR CONNECTING PIPE.

FLARED END SECTION FOR CONCRETE PIPE



CONNECTIONS FOR RIVETED PIPE

CONNECTIONS FOR HELICALLY CORRUGATED PIPE

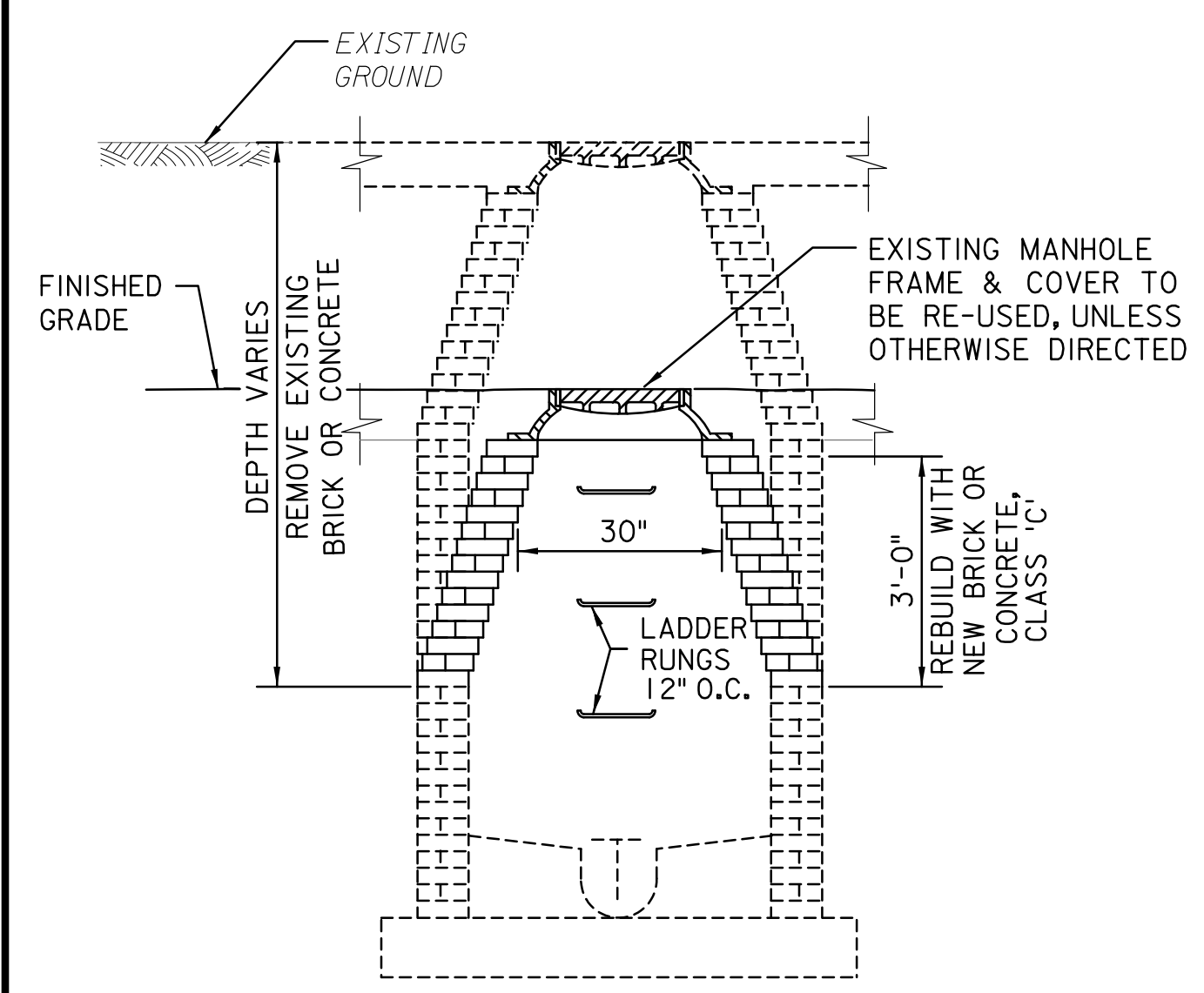
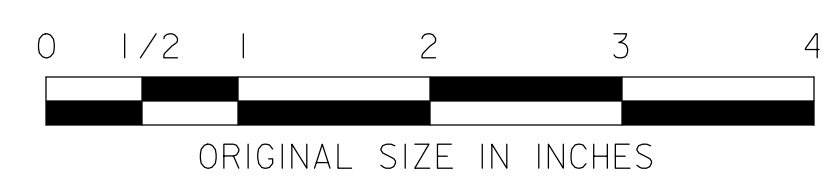
PIPE DIA.	A	B	C	E
12"	24"	24"	5"	24"
15"	24"	24"	7 1/2"	28"
18"	24"	24"	9"	34"
24"	24"	24"	10"	48"
30"	30"	26"	14"	60"
36"	36"	26"	14"	72"
42"	60"	36"	21"	78"
48"	60"	36"	24"	84"
54"	60"	36"	27"	90"
60"	60"	36"	31"	96"
72"	63"	36"	36"	108"

C- DIMENSION IS VERTICAL HEIGHT OF SECTION AT END OF FLARE.

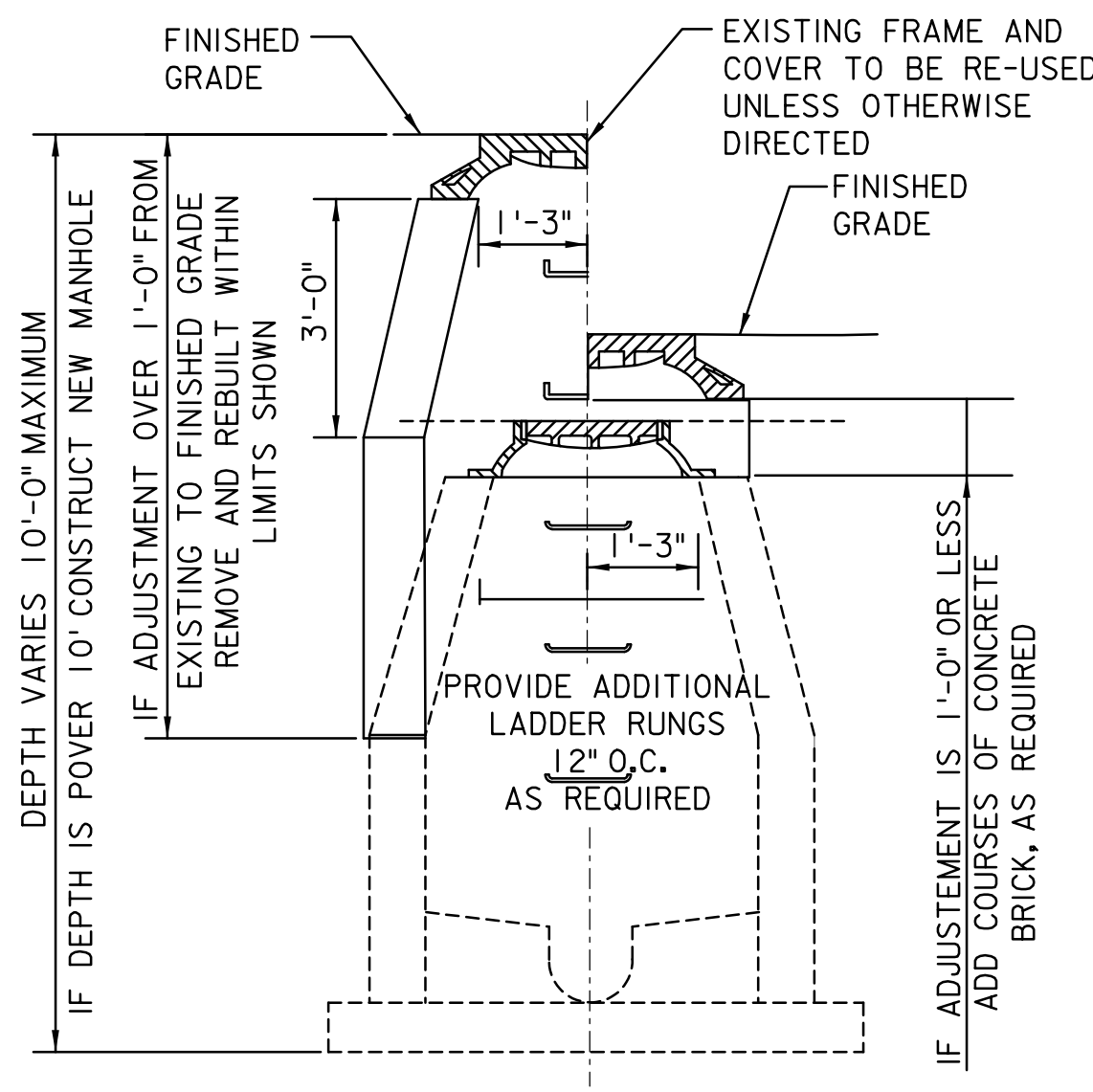
**TABLE OF DIMENSIONS
FLARED END SECTIONS FOR CONCRETE PIPE**

NOTES:

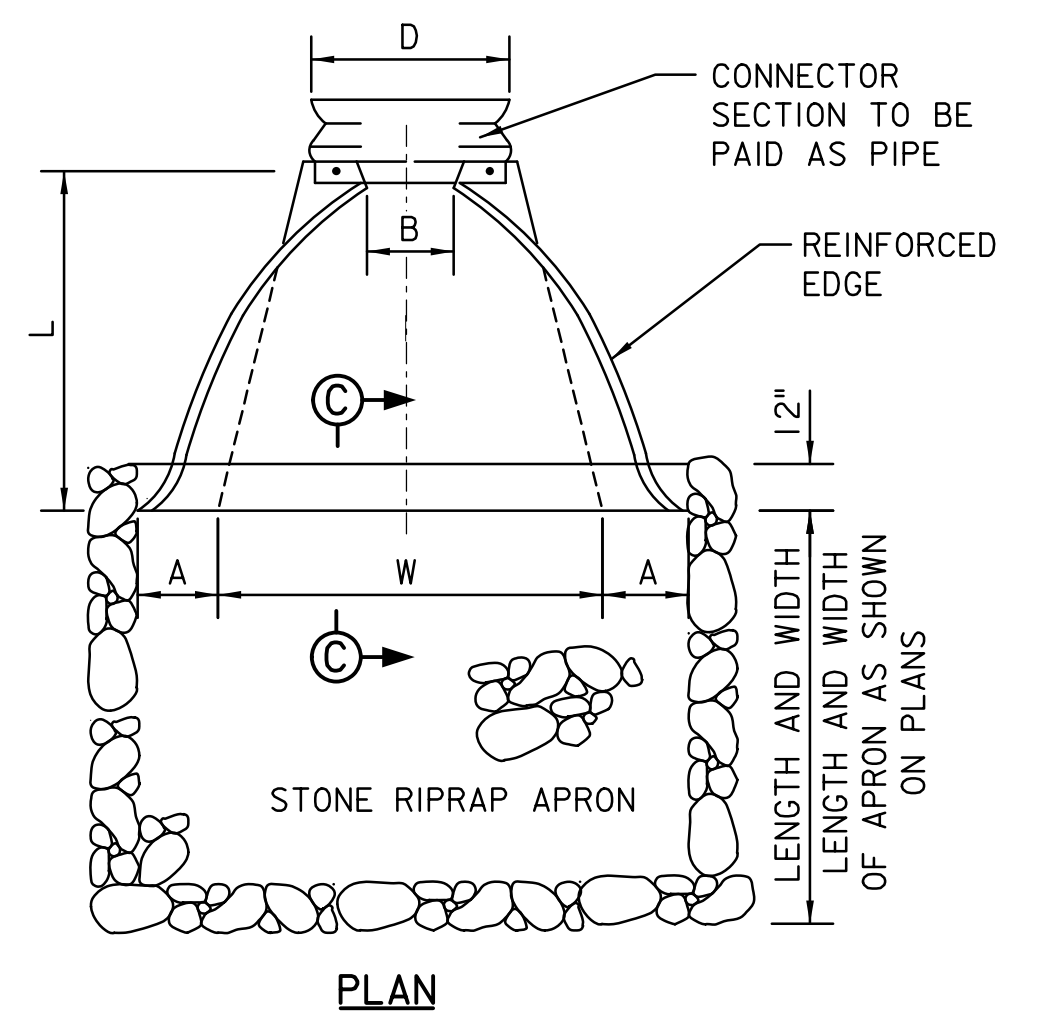
- LADDER, RUNGS TO BE PROVIDED IN ALL DROP INLETS OVER 4' DEEP.
- FRAMES TO BE RESET IN A FULL BED OF STIFF MORTAR.
- STONE RIPRAP APRONS ARE REQ'D. WITH FLARED END SECTIONS FOR ALL PIPES LARGER THAN 18" DIAMETER, AND WHERE SPECIFIED ON THE PLANS.
- HIGH DENSITY POLYETHYLENE (HDPE) FLARED END SECTIONS SPECIFIED WITHOUT STONE RIPRAP APRONS SHALL BE FURNISHED WITH TOE PLATE EXTENSIONS.
- WORK THIS DRAWING WITH STANDARD DRAWING DR-4A FOR FLARED END SECTION CONCRETE COLLAR.



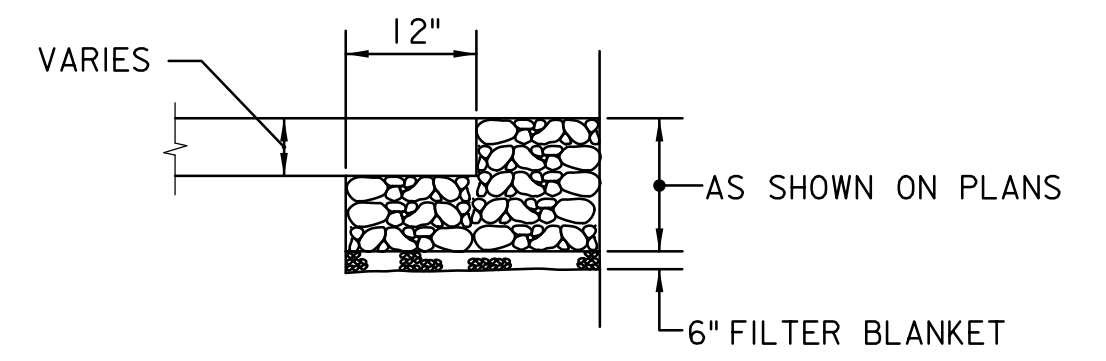
LOWERING EXISTING MANHOLE



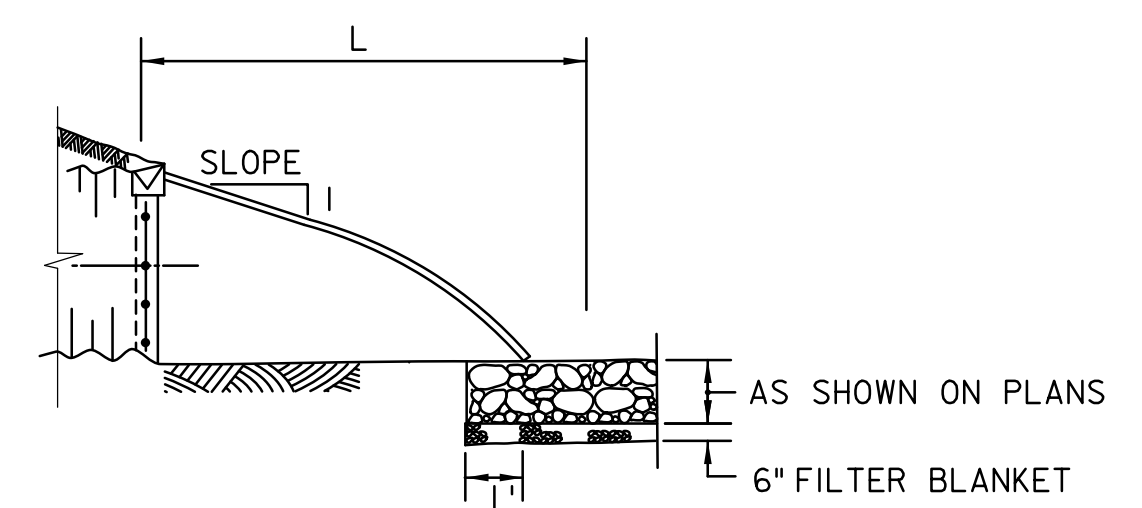
RAISING EXISTING MANHOLE



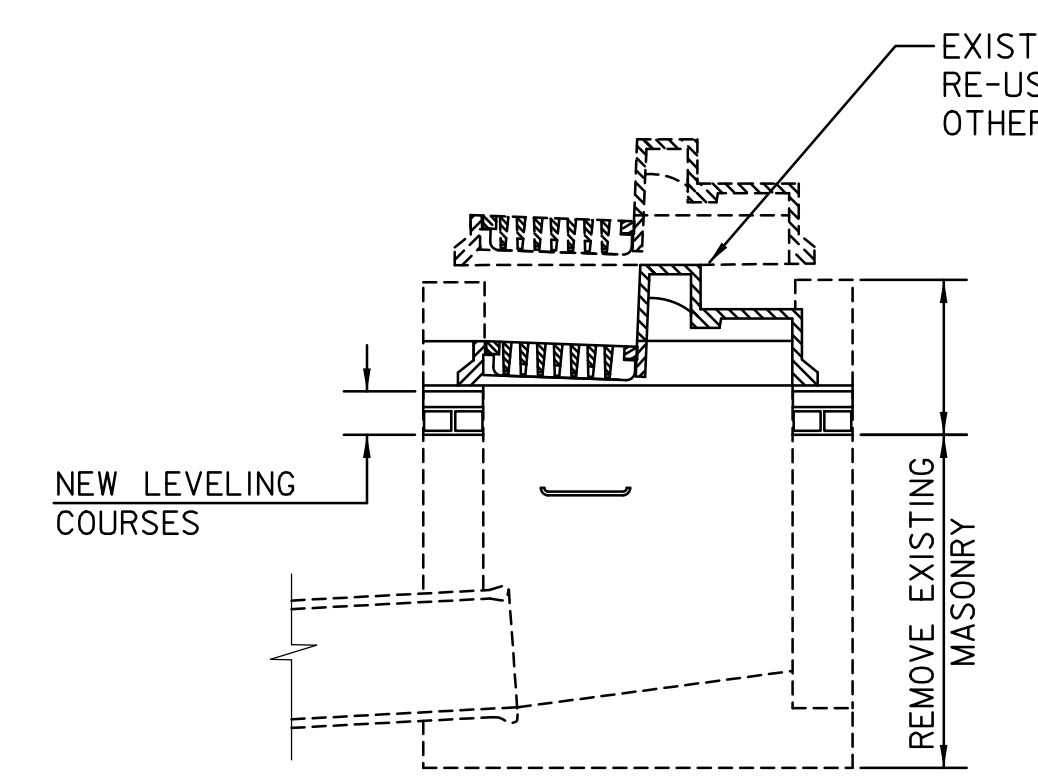
PLAN



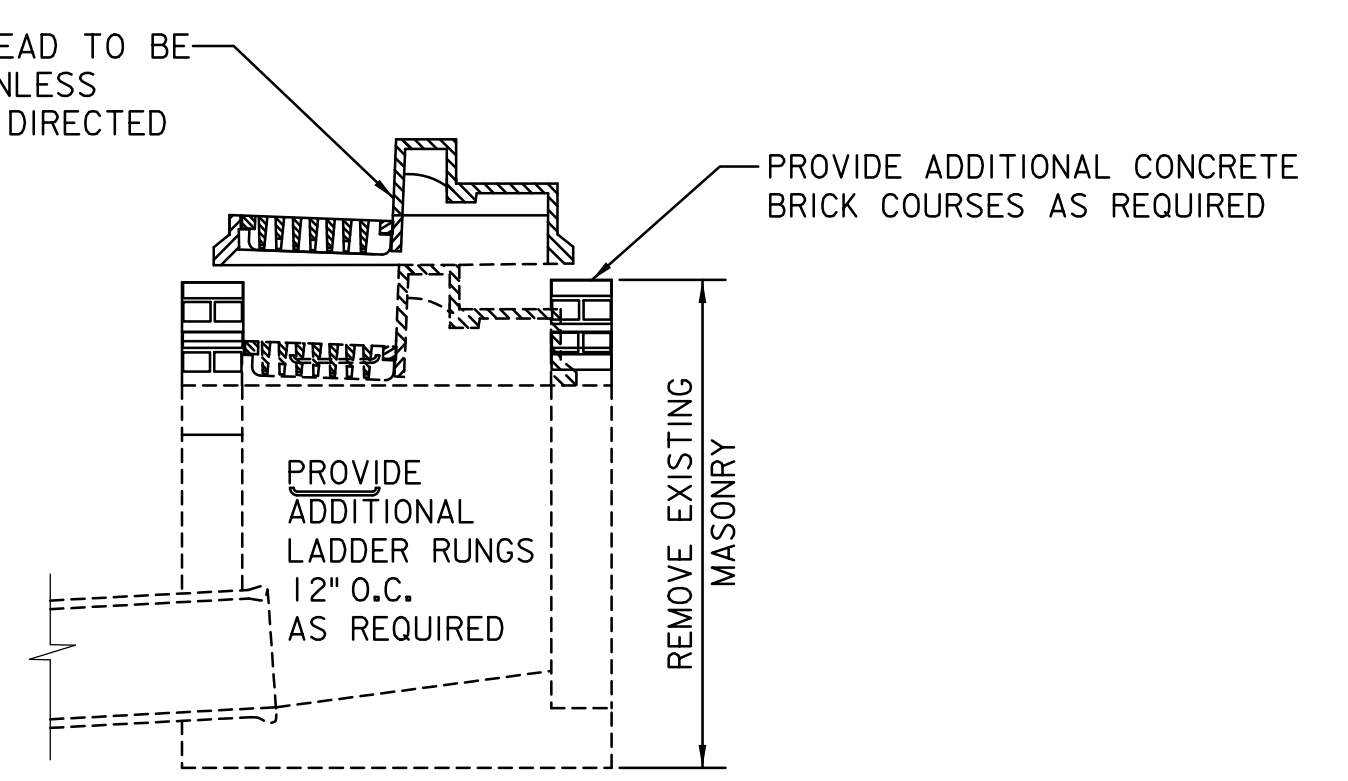
SECTION B-B



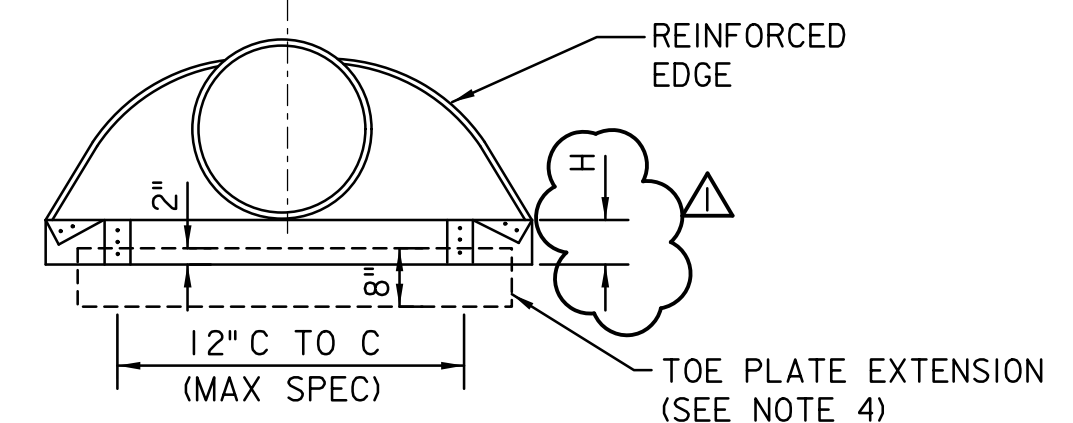
SECTION C-C



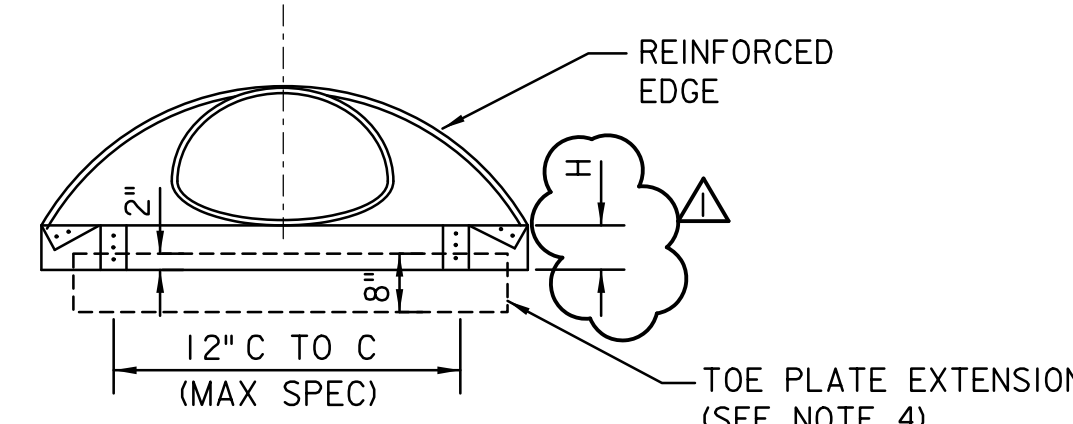
LOWERING EXISTING INLET



RAISING EXISTING INLET

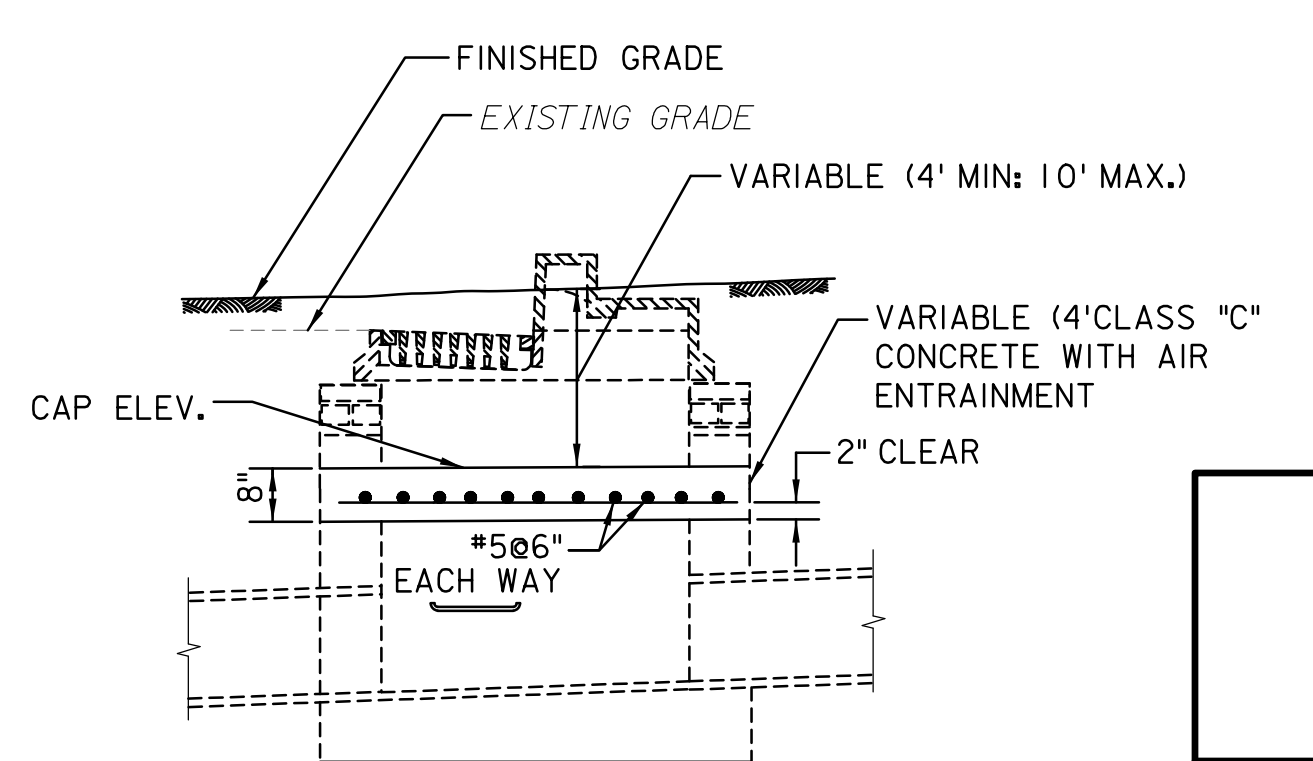


ELEVATION (CIRCULAR PIPE)



ELEVATION (ARCH PIPE)

FLARED END SECTIONS FOR HDPE PIPES



CAPPING EXISTING DRAINAGE STRUCTURE

NOTE: MANHOLES TO BE CAPPED IN A SIMILAR MANNER

REV.	DESCRIPTION	DATE
1	UPDATED FOR HDPE PIPE AND CONCRETE COLLAR	03/26
0	ORIGINAL DRAWING	04/09

NEW JERSEY TURNPIKE AUTHORITY
NEW JERSEY TURNPIKE GARDEN STATE PARKWAY
 STANDARD DRAWINGS

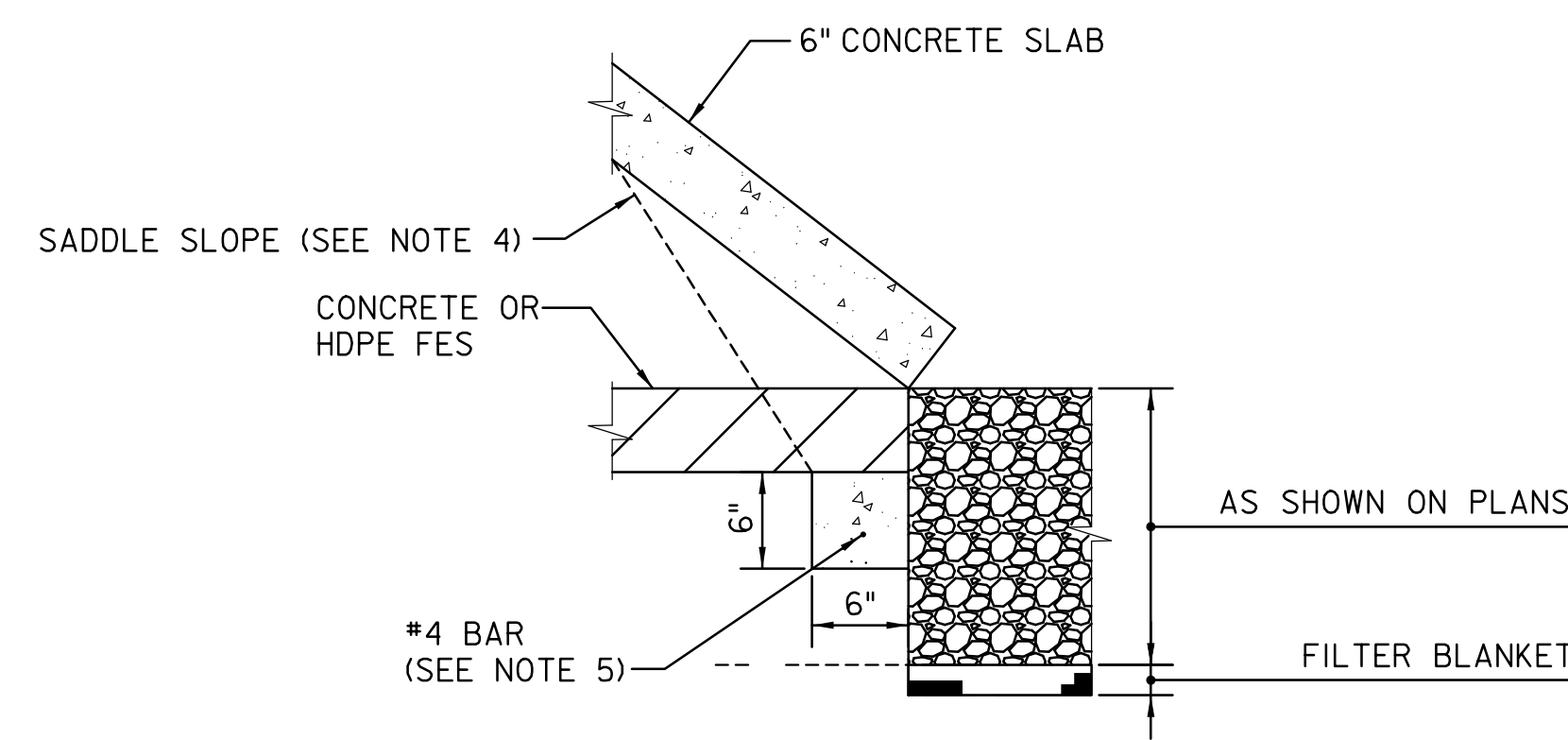
ALTERATIONS OF MANHOLES, INLETS AND MISCELLANEOUS DETAILS

OFFICE OF THE CHIEF ENGINEER
 NEW JERSEY TURNPIKE AUTHORITY
 WOODBRIDGE, NEW JERSEY

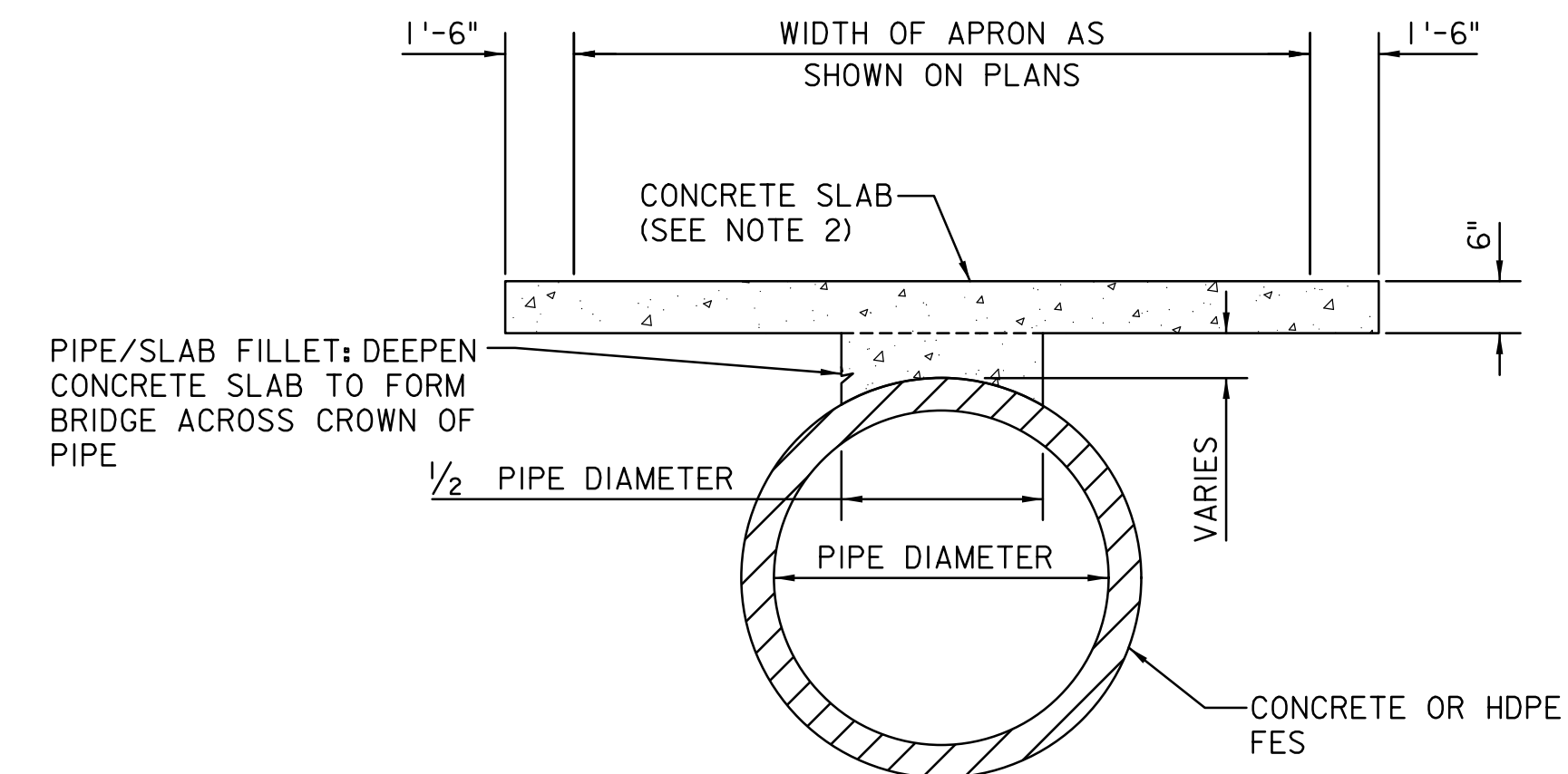
STANDARD DRAWING
DR-4

NOTES:

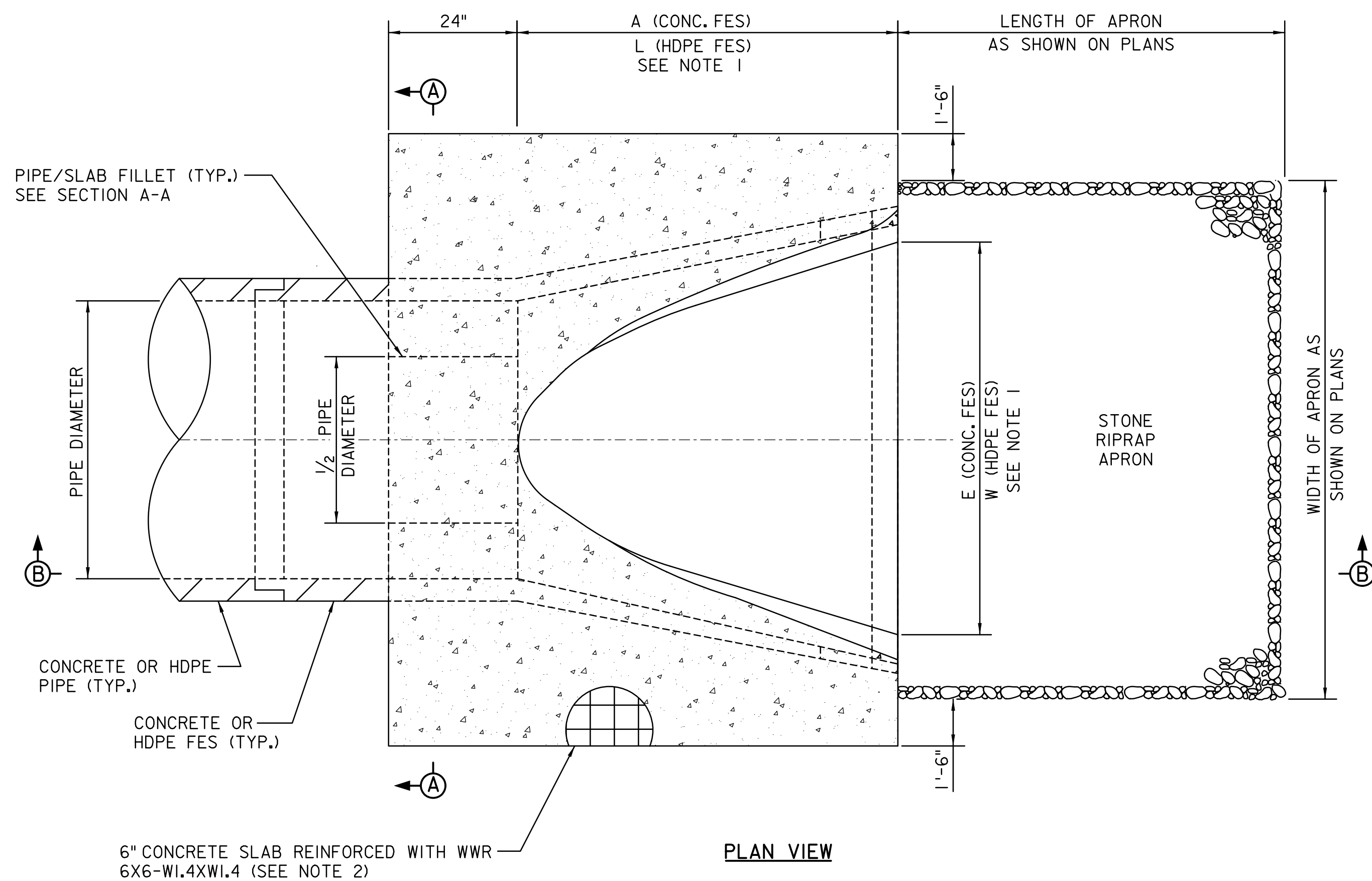
1. WORK THIS DRAWING WITH STANDARD DRAWING DR-4 FOR CONCRETE AND HDPE FLARED END SECTIONS. REFER TO TABLES ON STANDARD DRAWING DR-4 FOR DIMENSIONS.
2. CLASS B CONCRETE CAST-IN-PLACE REINFORCED SLABS ARE REQUIRED FOR ALL PIPE DIAMETERS.
3. STONE RIPRAP APRONS ARE REQUIRED WITH FLARED END SECTIONS FOR ALL PIPE DIAMETERS.
4. SLOPE TO CENTERLINE OF PIPE LESS THAN OR EQUAL TO 18" DIAMETER. SLOPE 1:1 FOR PIPES LARGER THAN 18" DIAMETER.
5. FOR INSTALLATION OF CONCRETE COLLARS AT EXISTING FLARED END SECTIONS TO REMAIN, THE 6"X6" CONCRETE SUPPORT SHALL BE ELIMINATED WITHIN THE LIMITS OF THE EXISTING END SECTION.
6. CONCRETE COLLAR TO BE PAID FOR AS INCIDENTAL CONCRETE.



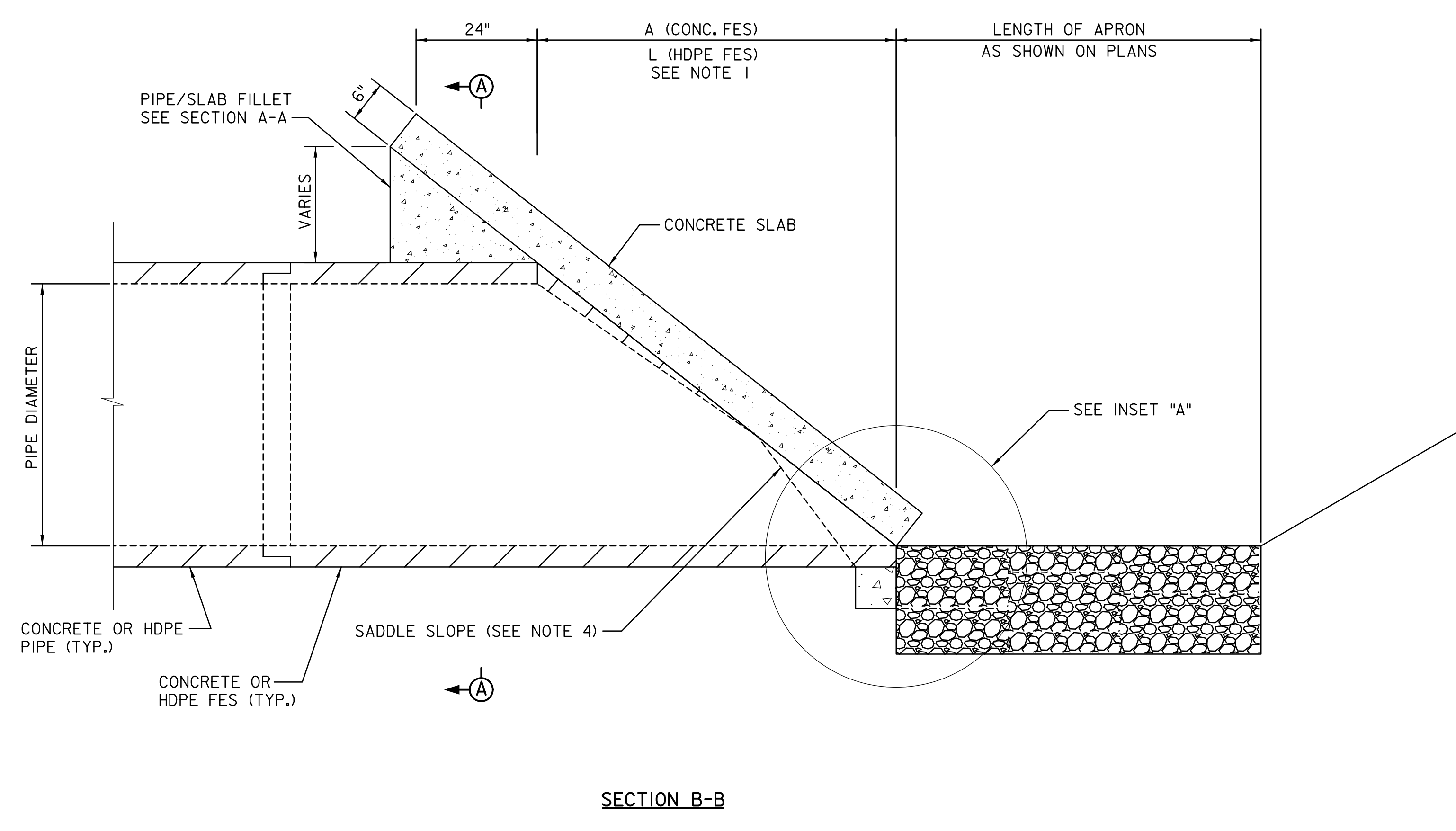
INSET "A"



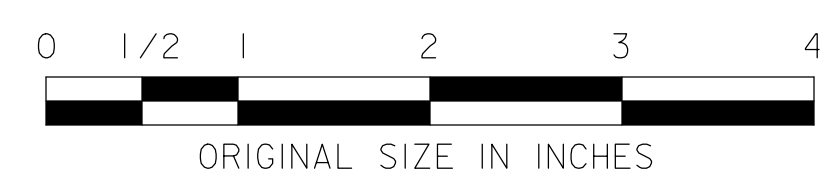
SECTION A-A



PLAN VIEW



SECTION B-B



CONCRETE COLLAR FOR FLARED END SECTIONS
(NOT TO SCALE)

NEW JERSEY TURNPIKE AUTHORITY
NEW JERSEY TURNPIKE
GARDEN STATE PARKWAY
 STANDARD DRAWINGS

FLARED END SECTION
CONCRETE COLLAR

OFFICE OF THE CHIEF ENGINEER
 NEW JERSEY TURNPIKE AUTHORITY
 WOODBRIDGE, NEW JERSEY

STANDARD DRAWING

DR-4A

REV.	DESCRIPTION	DATE
0	ORIGINAL DRAWING	03/26