

New Jersey Turnpike Authority

P.O. Box 5042, Woodbridge, NJ 07095



March 12, 2026

Document Change Announcement

Standard Drawings

Sign Panel and Structure Splice Detail

DCA2026SD-02

Subject: Revisions to

Drawing SI-13 Ground Mounted Sign Details

Drawing SI-14 Span Type Sign Structure (Aluminum) Truss Details

Drawing SI-42 Miscellaneous Details Sign Attachment And Conduit Termination

Drawing SI-47 Ground Mounted Signs, Double and Triple Pole Signs

Description of Change:

This DCA clarifies fabricator shop drawing submittal requirements for sign panel stringers, stringer splices, sign mounting hardware, and other minor changes. It also clarifies the installation of Authority-furnished overhead sign structures and aluminum posts for ground mounted signs, clarifies the removal of structural sign supports, and relocates the requirements for ground mounted signs with timber poles and posts. DCAs to the Standard Drawings and Standard Supplementary Specifications are released concurrently to address this.

Notice to New Jersey Turnpike Authority Staff and Design Consultants

Effective immediately, all contracts currently in the design phase shall incorporate the revisions herein. For advertised contracts awaiting the opening of bids this revision shall be incorporated via addendum. Contact your New Jersey Turnpike Authority Project Manager for instruction.

The revisions may be accessed on the Authority's webpage: <https://www.njta.gov/business-hub/professional-services/document-change-announcements/>

Recommended By:

(signature on original)

Lamis T. Malak, P.E.
Deputy Chief Engineer - Design

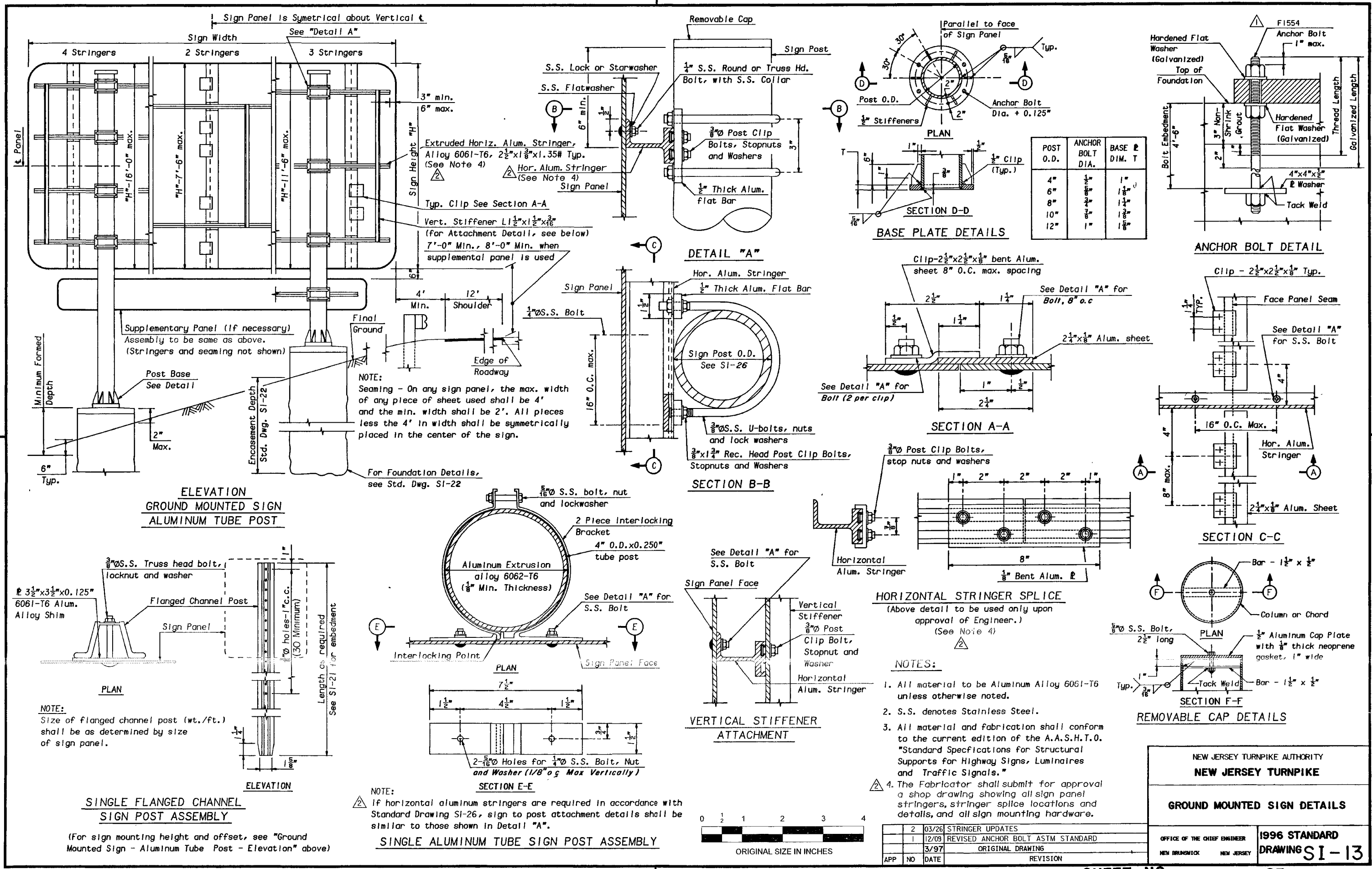
(signature on original)

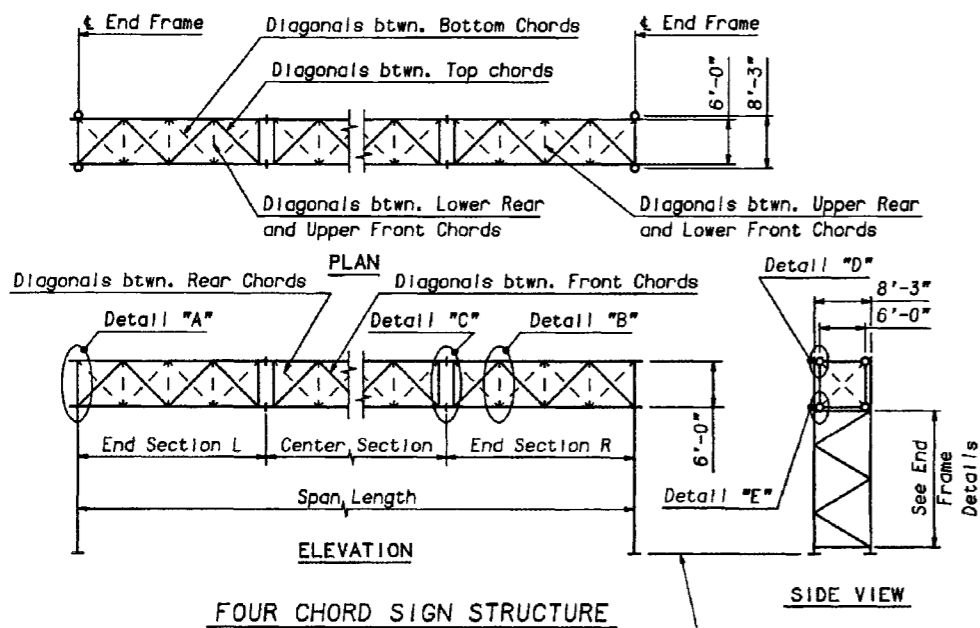
Robert Higham, P.E.
Deputy Chief Engineer - Construction

Approved By:

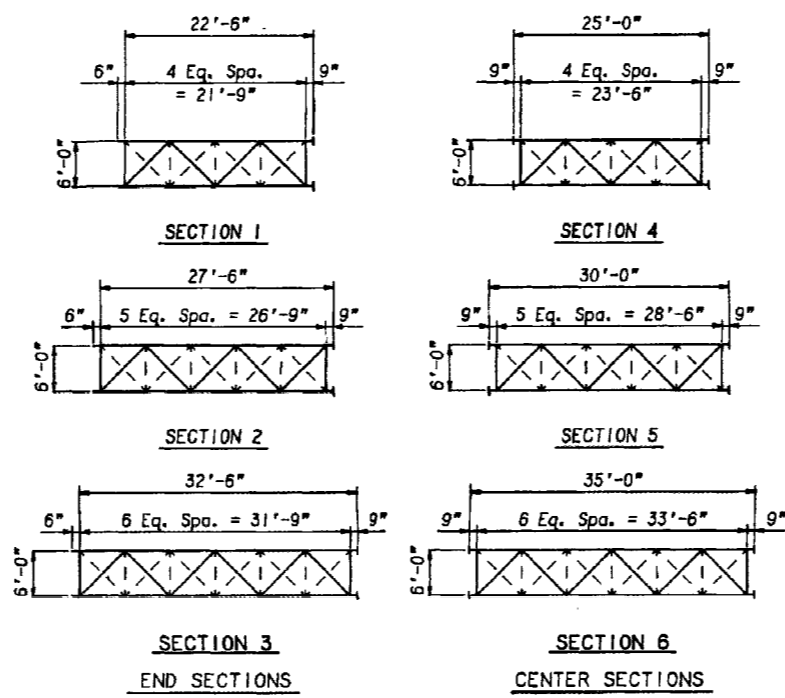
(signature on original)

Daniel L. Hesslein, P.E.
Chief Engineer

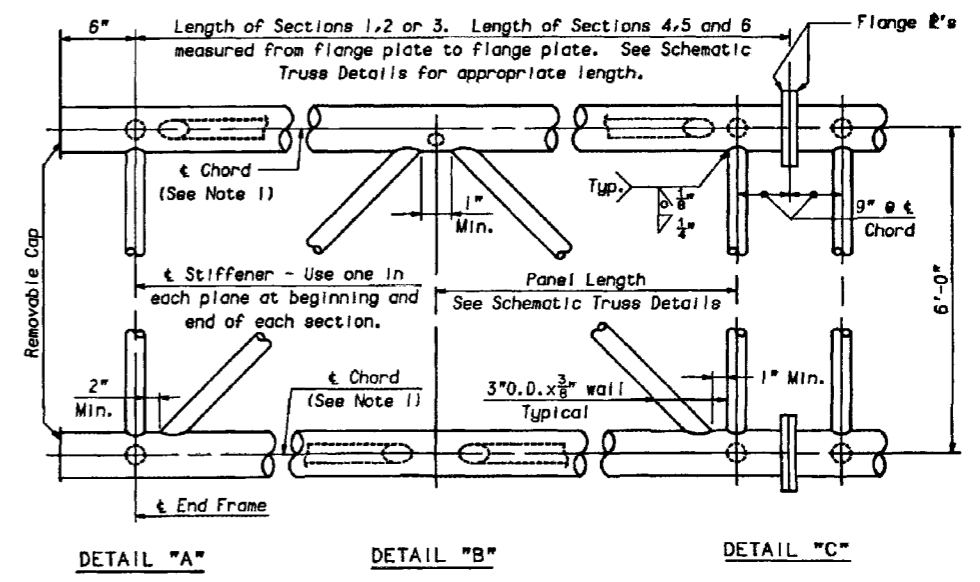




FOUR CHORD SIGN STRUCTURE



SCHMATIC TRUSS DETAILS
See Table "A"

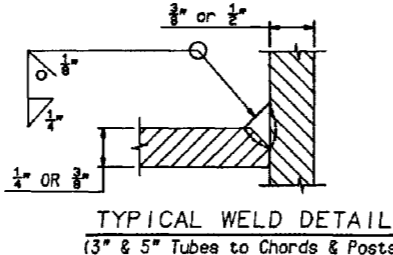


TYPICAL TRUSS SECTION

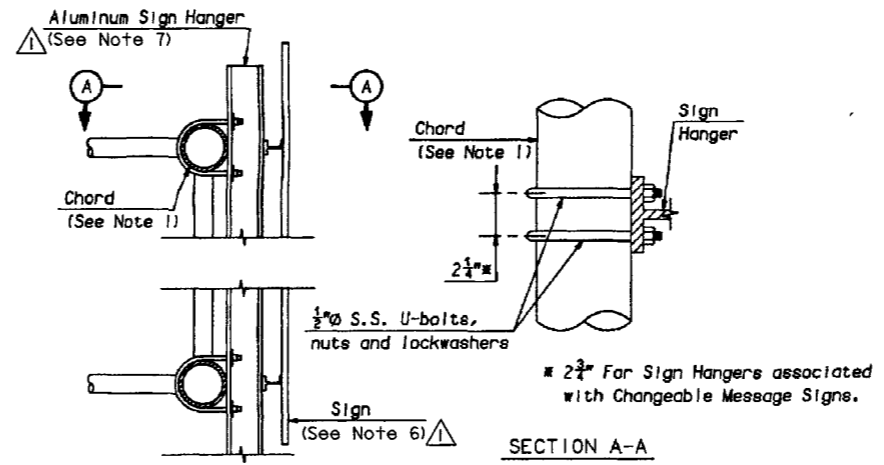
SPAN LENGTH	END SECTION L	CENTER SECTIONS	END SECTION R	CAMBER (IN)
45'	1	-	1	5/8
50'	1	-	2	3/4
55'	2	-	2	7/8
60'	2	-	3	1
65'	3	-	3	1 1/4
70'	1	4	1	1 3/8
75'	1	5	1	1 3/4
80'	2	4	2	2 1/8
85'	2	5	2	2 1/2
90'	3	4	3	2 5/8
95'	3	5	3	3 1/4
100'	3	6	3	3 3/4
105'	2	4	4	3 3/8
110'	2	4	5	3 3/4
115'	2	5	5	4 1/4
120'	2	5	5	4 3/4
125'	3	5	5	5 5/8
130'	2	6	6	6
135'	3	6	6	6 3/4

See Schematic Truss Detail for Section Lengths.

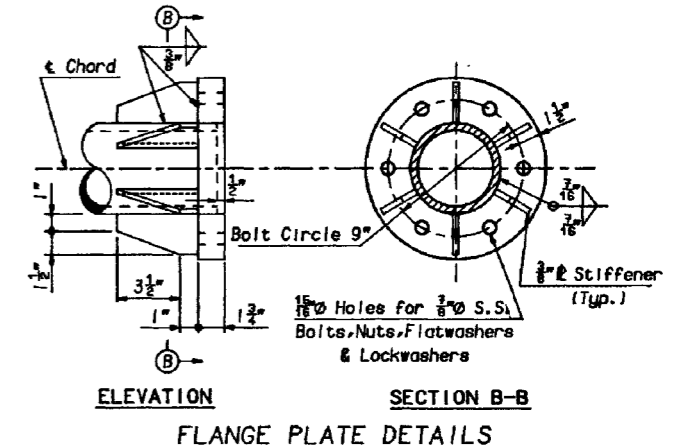
NOTE:
These Standard Overhead Sign Structures shall not be used, with fixed Signs, for Span exceeding 135' or for Sign areas exceeding 800 Sq. Ft. When used with Changeable Message Signs these limits shall be 135' and 600 Sq. Ft.



TYPICAL WELD DETAIL
(3" & 5" Tubes to Chords & Posts)

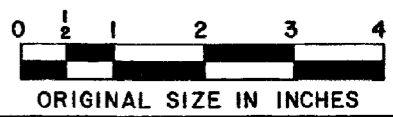


SIGN HANGER CONNECTION DETAIL



FLANGE PLATE DETAILS

- NOTES:
- Truss chords shall be 6" O.D. x 5/16" wall for all spans up to and including 100 feet. 6" O.D. x 1/2" wall chords shall be used for spans ranging from 105 feet up to and including 135 feet.
 - All material and fabrication shall conform to the current edition of the A.A.S.H.T.O. "Standard Specifications for Structural Supports for Highway Signs, Luminaires and Traffic Signals."
 - All material shall be Aluminum Alloy 6061-T6 unless noted otherwise.
 - For End Frame Details, Removable Cap Details, Detail "D" and Detail "E", see Standard Drawing SI-15.
 - S.S. denotes Stainless Steel conforming to A.S.T.M. designation A276, Type 304. The 3/8" truss chord flange bolts and nuts shall be Condition B, with a minimum yield stress of 65,000 psi, other material shall be Condition A.
 - For sign panel to stringer connection details, see Standard Drawing SI-13.
 - For stringer to hanger connection details, see section C-C on Standard Drawing SI-16A.



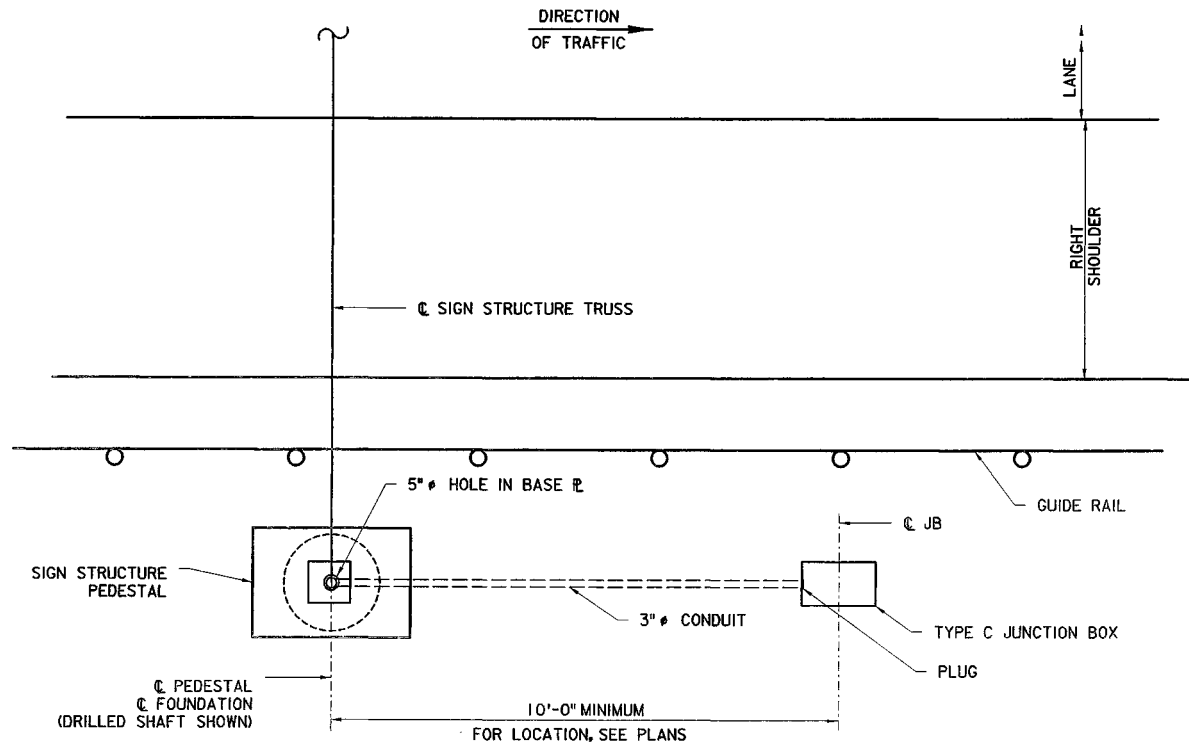
ORIGINAL SIZE IN INCHES

NEW JERSEY TURNPIKE AUTHORITY
NEW JERSEY TURNPIKE
SPAN TYPE SIGN STRUCTURE
(ALUMINUM)
TRUSS DETAILS

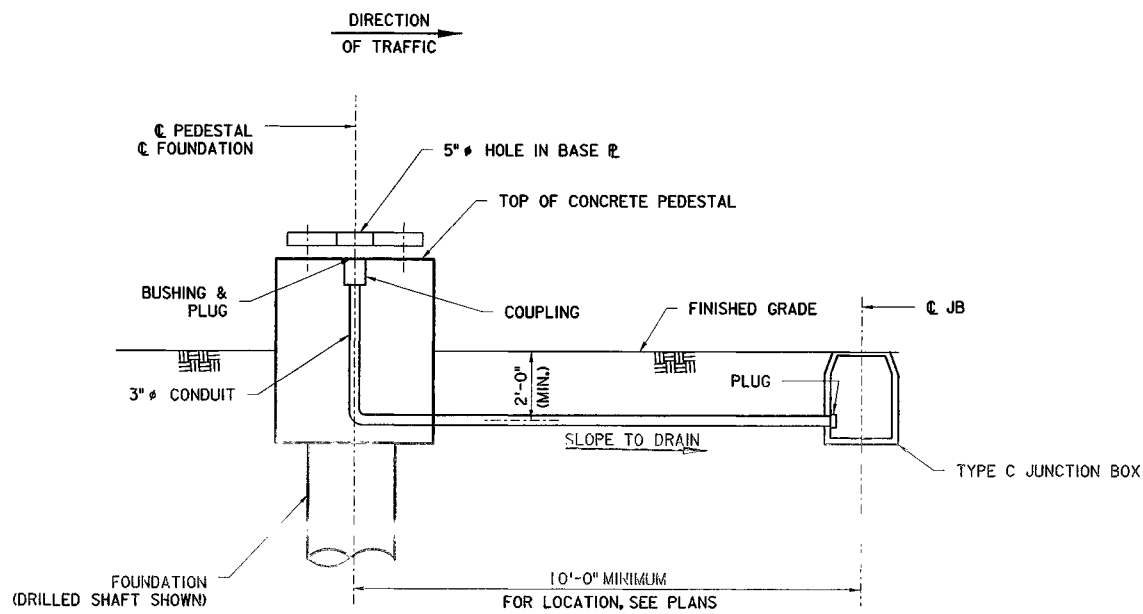
OFFICE OF THE CHIEF ENGINEER
NEW BRUNSWICK NEW JERSEY

1996 STANDARD DRAWING SI-14

APP	NO	DATE	REVISION
	1	03/26	STRINGER UPDATES
	0	12/96	ORIGINAL DRAWING

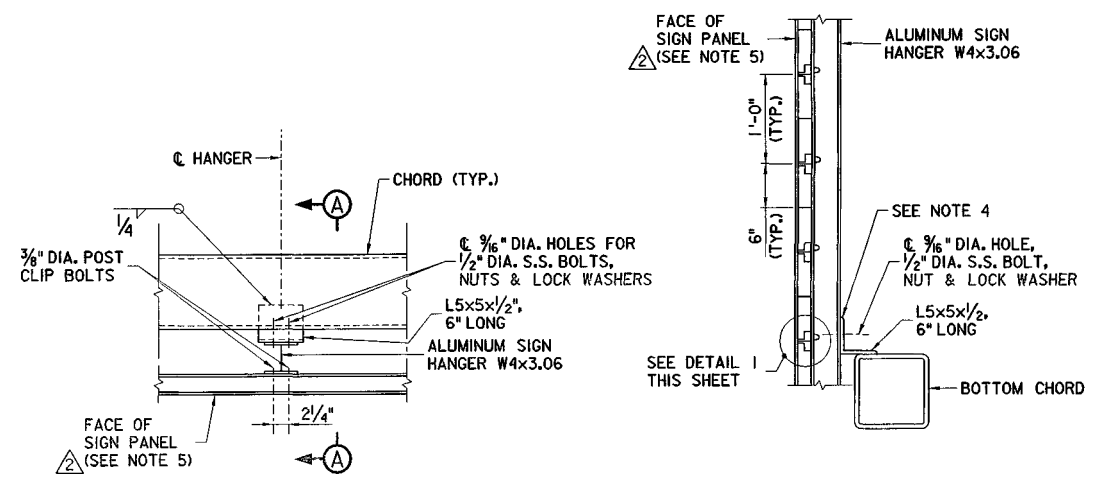


PLAN



SIDE VIEW

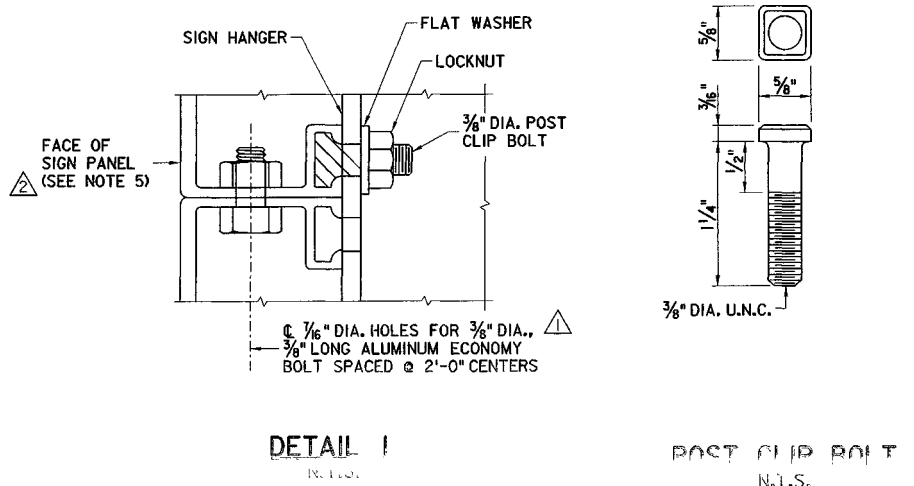
TYPICAL CONDUIT TERMINATION DETAILS AT SIGN SUPPORT STRUCTURES
(CANTILEVER SIGN STRUCTURE SHOWN, OVERHEAD SPAN-TYPE SIGN STRUCTURE SIMILAR)
N.T.S.



PLAN

SECTION A-A

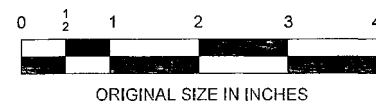
SIGN PANEL CONNECTION DETAILS
1" = 1'-0"



DETAIL 1

POST CLIP BOLT
N.T.S.

- NOTES:
1. ALUMINUM SIGN HANGERS W4x3.06 SHALL BE SPACED AT 4'-6" MAXIMUM O.C.
 2. ALUMINUM EXTRUSION AND CONNECTIONS ARE SHOWN FOR INFORMATION ONLY. EXACT DETAILS AND RELATED HARDWARE TO BE PROVIDED BY THE MANUFACTURER, AND TO BE APPROVED BY THE ENGINEER.
 3. S.S. DENOTES STAINLESS STEEL CONFORMING TO ASTM A276, TYPE 304.
 4. APPROVED S.S. SHIM PLATES OR NEOPRENE PADS SHALL BE PLACED BETWEEN DISSIMILAR METALS AT CONNECTED SURFACES OF ALUMINUM TO STEEL.
 5. EXTRUDED SIGN PANEL SHOWN, FLAT SHEET SIGN PANEL SIMILAR.
 6. FOR FLAT SHEET SIGN PANEL TO STRINGER CONNECTION DETAILS, SEE STANDARD DRAWING SI-13.
 7. FOR FLAT SHEET SIGN PANEL STRINGER TO HANGER CONNECTION DETAILS, SEE SECTION C-C ON STANDARD DRAWING SI-16A.



APP.	NO	DATE	REVISION
	2	03/26	STRINGER UPDATES
	1	03/14	REVISED HOLE SIZE
	0	09/12	REISSUED DRAWING

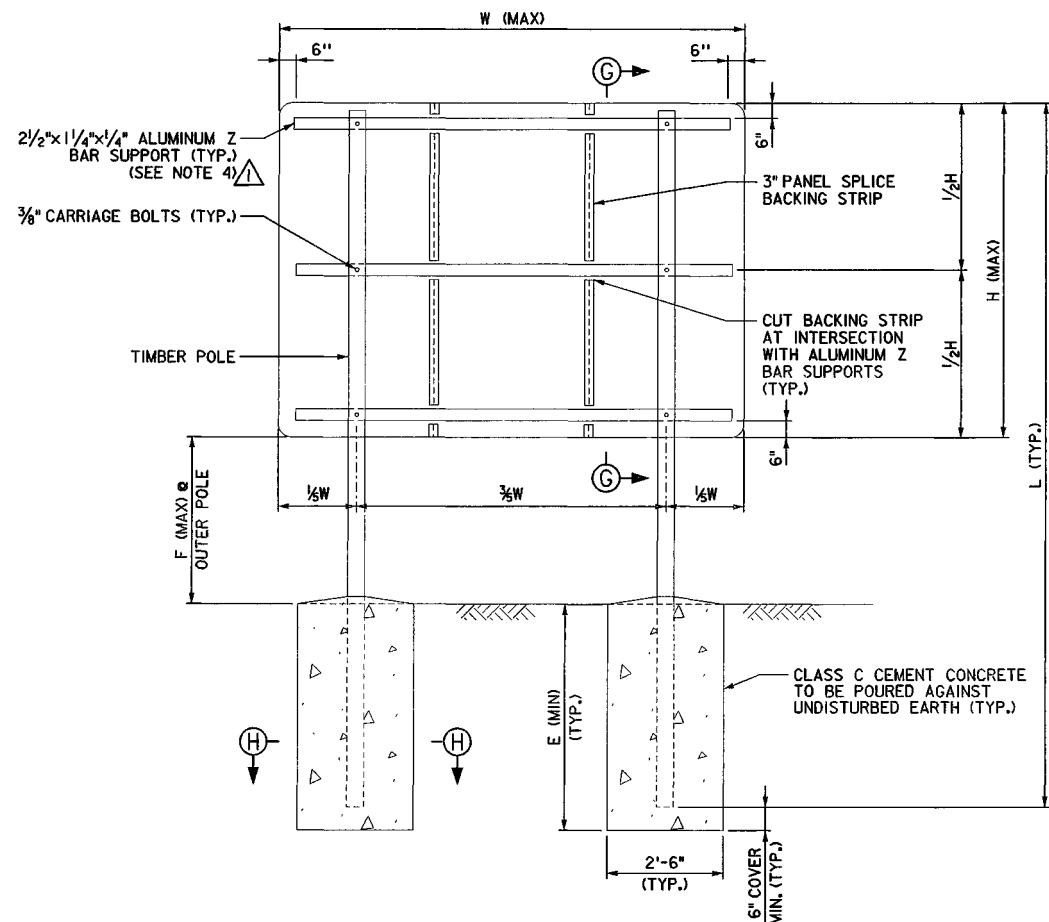
NEW JERSEY TURNPIKE AUTHORITY
GARDEN STATE PARKWAY

MISCELLANEOUS DETAILS
SIGN ATTACHMENT & CONDUIT TERMINATION

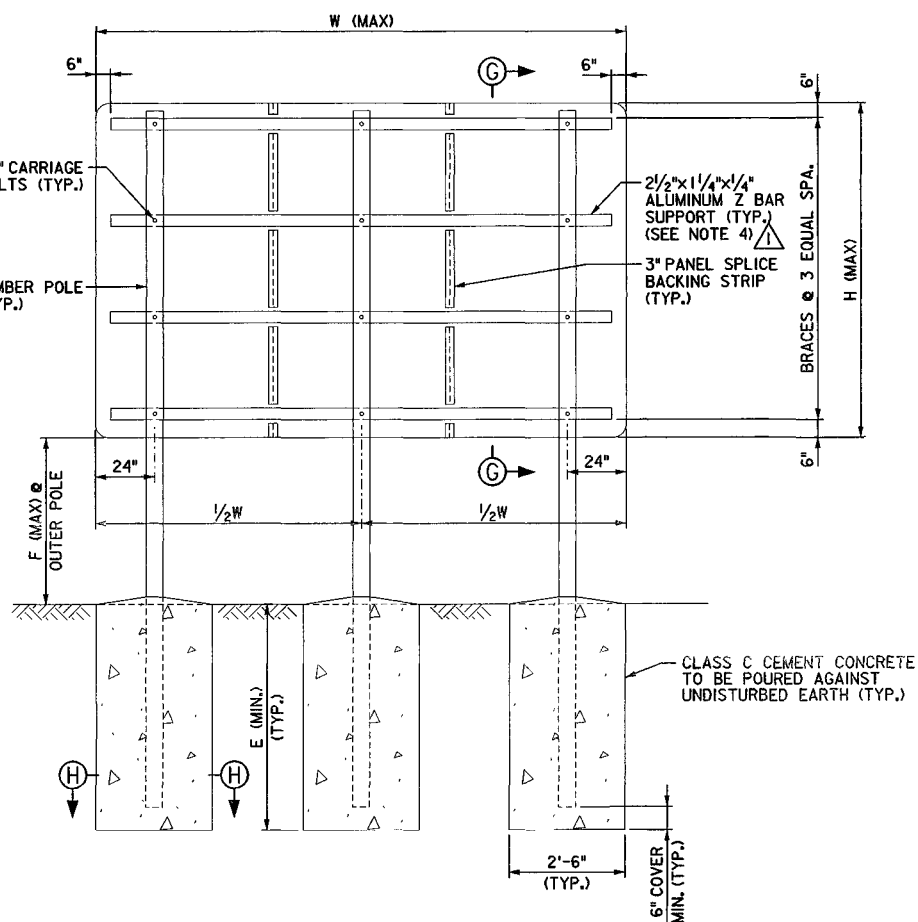
OFFICE OF THE CHIEF ENGINEER
NEW JERSEY TURNPIKE AUTHORITY

2010 STANDARD
DRAWING SI-42

WOODBIDGE NEW JERSEY



DOUBLE POLE SIGNS
N.T.S.



TRIPLE POLE SIGNS
N.T.S.

TABLE H - NON-BREAKAWAY DOUBLE AND TRIPLE POLE SUPPORTED SIGN STRUCTURES

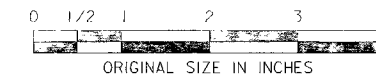
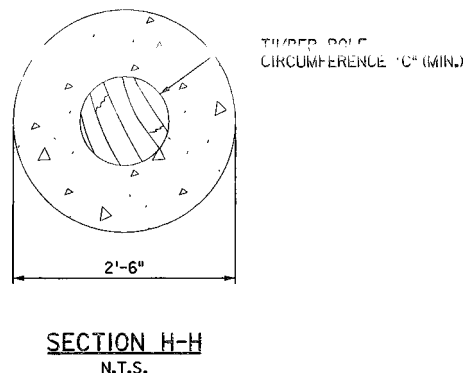
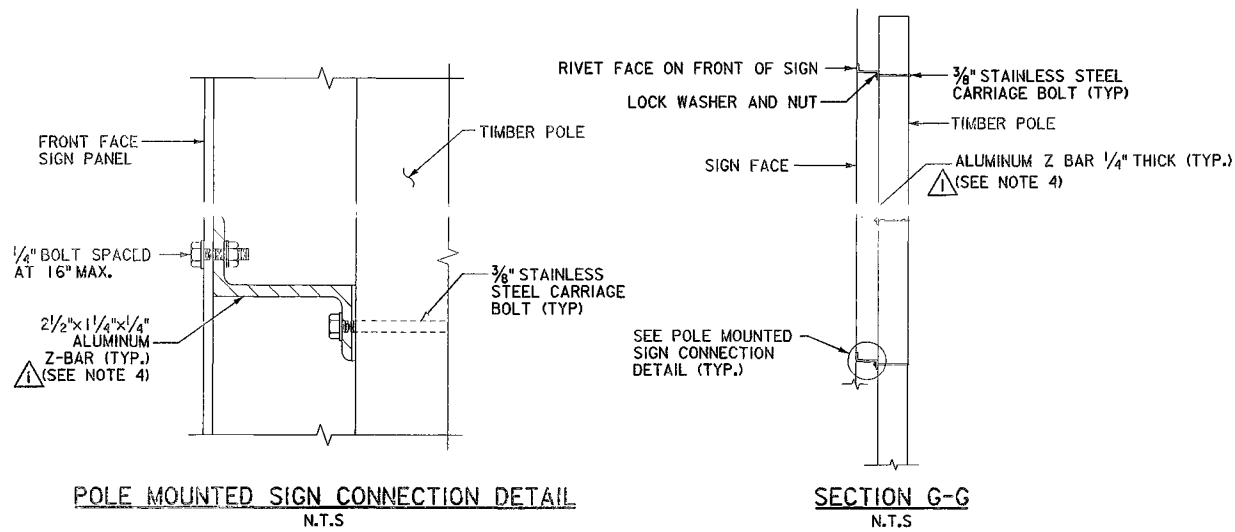
H (FT)	W (FT)	POLE CLASS	NO. OF POLES	FURNISHED POLE LENGTH (FT)	F (FT)	E (FT)	C (IN)	L (FT)
10	10	I	2	30	7.0 TO 14.0	6.0	36.5	22.5 TO 29.5
10	12	I	2	35	7.0 TO 14.0	6.0	39.0	22.5 TO 29.5
10	14	I	2	35	7.0 TO 14.0	6.5	39.0	23.0 TO 30.0
10	16	I	3	30	7.0 TO 14.0	6.0	36.5	22.5 TO 29.5
10	18	I	3	35	7.0 TO 15.0	6.5	39.0	23.0 TO 31.0
10	20	I	3	35	7.0 TO 15.5	6.0	39.0	22.5 TO 31.0
11	11	I	2	35	7.0 TO 14.0	6.0	39.0	23.5 TO 30.5
11	12	I	2	35	7.0 TO 14.0	6.5	39.0	24.0 TO 31.0
11	14	I	2	35	7.0 TO 14.0	6.5	39.0	24.0 TO 31.0
11	16	I	3	35	7.0 TO 14.0	6.5	39.0	24.0 TO 31.0
11	18	I	3	35	7.0 TO 15.0	6.5	39.0	24.0 TO 32.0
11	20	I	3	35	7.0 TO 15.5	6.5	39.0	24.0 TO 32.5
12	12	I	2	35	7.0 TO 14.0	6.5	39.0	25.0 TO 32.0
12	14	I	2	35	7.0 TO 14.0	6.5	39.0	25.0 TO 32.0
12	16	I	3	35	7.0 TO 14.0	6.0	39.0	24.5 TO 31.5
12	18	H1	3	35	7.0 TO 15.0	7.0	41.5	25.5 TO 33.5
12	20	H1	3	35	7.0 TO 15.5	7.0	41.5	25.5 TO 34.0
13	13	H1	2	35	7.0 TO 14.0	7.0	41.5	26.5 TO 33.5
13	14	H1	2	35	7.0 TO 14.0	7.5	41.5	27.0 TO 34.0
13	16	H1	3	35	7.0 TO 14.0	6.5	41.5	26.0 TO 33.0
13	18	H2	3	40	7.0 TO 15.5	7.0	46.0	26.5 TO 35.0
13	20	H2	3	40	7.0 TO 15.5	7.5	46.0	27.0 TO 35.5
14	14	H2	2	35	7.0 TO 14.0	7.5	43.5	28.0 TO 35.0
14	16	H2	3	35	7.0 TO 14.0	7.0	43.5	27.5 TO 34.5
14	18	H2	3	40	7.0 TO 15.5	7.0	46.0	27.5 TO 36.0
14	20	H2	3	40	7.0 TO 15.5	7.5	46.0	28.0 TO 36.5
15	15	H2	3	35	7.0 TO 10.0	6.5	43.5	28.0 TO 31.0
15	15	H2	3	40	10.0 TO 14.0	7.0	46.0	31.5 TO 35.5
15	16	H2	3	40	7.0 TO 14.0	7.0	46.0	28.5 TO 35.5
15	18	H2	3	40	7.0 TO 15.5	7.5	46.0	29.0 TO 37.5
15	20	H2	3	40	7.0 TO 15.5	7.5	46.0	29.0 TO 37.5

NOTES:

- SIGN STRUCTURES IN TABLE H SHALL REQUIRE ROADSIDE PROTECTION OR BE LOCATED OUTSIDE OF THE CLEAR ZONE.
- EXIT OVERPANEL SIGNS WIDER THAN 11'-0" SHALL BE MOUNTED ON TIMBER POLE SIGNS. OVERPANEL MOUNTING DETAIL TO BE DESIGNED BY THE ENGINEER.
- MINIMUM TIMBER POLE CIRCUMFERENCE, "C", IS MEASURED AT SIX (6) FEET FROM THE BUTT OF THE POLE.
- THE FABRICATOR SHALL SUBMIT FOR APPROVAL A SHOP DRAWING SHOWING ALL SPLICE LOCATIONS AND DETAILS.

REFERENCES:

- FOR GENERAL NOTES, SEE SHEET SI-43.
- FOR BACKING STRIP DETAIL SEE SHEET SI-46.



NEW JERSEY TURNPIKE AUTHORITY

GARDEN STATE PARKWAY

GROUND MOUNTED SIGNS
DOUBLE AND TRIPLE POLE SIGNS

OFFICE OF THE CHIEF ENGINEER
NEW JERSEY TURNPIKE AUTHORITY

STANDARD DRAWING
SI-47

WOODBRIDGE NEW JERSEY

1	STRINGER UPDATES	03/26
0	ORIGINAL DRAWING	6/16
REV.	DESCRIPTION	DATE